

**TAIYO YUDEN**

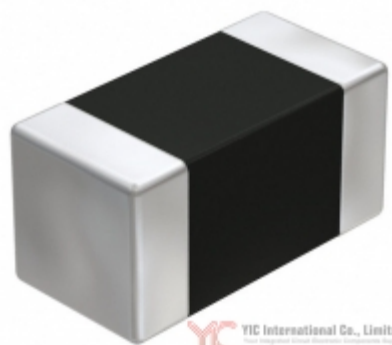


Image may be representation.  
See specs for product details.

## UMK105CG180JVHF





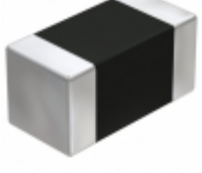


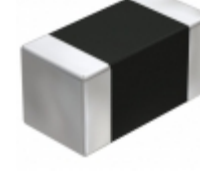
<b>Hersteller-Teilenummer:</b>	UMK105CG180JVHF
<b>Hersteller / Marke:</b>	Taiyo Yuden
<b>Teil der Beschreibung:</b>	CAP CER 18PF 50V NP0 0402
<b>Datenblätter:</b>	<a href="#">1.UMK105CG180JVHF.pdf</a> <a href="#">2.UMK105CG180JVHF.pdf</a>
<b>RoHs Status:</b>	Bleifrei / RoHS-konform
<b>Lagerzustand:</b>	New original, Stock Available.
<b>Liefern von:</b>	Hong Kong
<b>Versandweg:</b>	DHL/Fedex/TNT/UPS/EMS

### Spezifikationen

Teilenummer	UMK105CG180JVHF
Hersteller	Taiyo Yuden
Beschreibung	CAP CER 18PF 50V NP0 0402
Kategorie	Kondensatoren > Keramikkondensatoren
Teilstatus	Require For Quote & Check Stock
Serie	M
Spannung - Nennwert	50V
Betriebstemperatur	-55°C ~ 125°C
Bewertungen	AEC-Q200
Befestigungsart	Surface Mount, MLCC
Größe / Dimension	0.039" L x 0.020" W (1.00mm x 0.50mm)
Höhe - eingesteckt (max)	-
Eigenschaften	-
Kapazität	18pF
Toleranz	±5%
Anwendungen	Automotive
Leiter-Abstand	-
Verpackung / Gehäuse	0402 (1005 Metric)
Temperaturkoeffizient	C0G, NP0
Dicke (max)	0.022" (0.55mm)
Leitungsstil	-
Verpackung	Tape & Reel (TR)

UMK105CG180JVHF ist neu im Original, Suche UMK105CG180JVHF Datenblätter, PDF, Inventar bei Y-IC.com Online, Bestellen Sie UMK105CG180JVHF Taiyo Yuden mit Garantie und Vertrauen. Anfrage UMK105CG180JVHF: Info@Y-IC.com

Sie können auch interessiert sein:

 <b>UMK105CG180JW-F</b> Taiyo Yuden CAP CER 18PF 50V NP0 0402	 <b>UMK105CG181JVHF</b> Taiyo Yuden CAP CER 180PF 50V NP0 0402	 <b>UMK105CG180KW-F</b> Taiyo Yuden CAP CER 18PF 50V NP0 0402	 <b>UMK105CG151JV-F</b> Talema CAP CER 150PF 50V NP0 0402
 <b>UMK105CG181JV-F</b> Taiyo Yuden CAP CER 180PF 50V NP0 0402	 <b>UMK105CG151JV-F</b> Taiyo Yuden CAP CER 150PF 50V NP0 0402	 <b>UMK105CG180JV-F</b> Taiyo Yuden CAP CER 18PF 50V NP0 0402	 <b>UMK105CG181KV-F</b> Taiyo Yuden CAP CER 180PF 50V NP0 0402

### heiße Teile

Mehr

⊗ UMK105CG100DW-F	↔ UMK105CG100FW-F	⇒ UMK105CG101JV-F	D UMK105CG101JVHF	⇒ UMK105CG101KV-F
⊣ UMK105CG102JVHF	⊗ UMK105CG110JW-F	D UMK105CG120JV-F	⇒ UMK105CG120JVHF	⇒ UMK105CG120JW-F
⊗ UMK105CG120KW-F	⊣ UMK105CG121JV-F	⊗ UMK105CG121JVHF	↔ UMK105CG121JVHF	⇒ UMK105CG121JW-F
D UMK105CG121KW-F	⊗ UMK105CG150JV-F	⊣ UMK105CG150JVHF	⊗ UMK105CG150JW-F	⇒ UMK105CG150KW-F
⇒ UMK105CG151JV-F	↔ UMK105CG151JV-F	⊗ UMK105CG151JVHF	⊣ UMK105CG151KV-F	⇒ UMK105CG180JV-F
↔ UMK105CG180JW-F	⇒ UMK105CG180KW-F	D UMK105CG181JV-F	⊗ UMK105CG181JVHF	⊣ UMK105CG181KV-F
⊗ UMK105CG1R2BV-F	D UMK105CG1R2BW-F	⇒ UMK105CG1R2CV-F	↔ UMK105CG1R2CW-F	⇒ UMK105CG1R5BV-F
⊣ UMK105CG1R5BW-F	⊗ UMK105CG1R5CV-F	↔ UMK105CG1R5CW-F	⇒ UMK105CG1R5DV-F	⇒ UMK105CG1R8BV-F
⊗ UMK105CG1R8BW-F	⊣ UMK105CG1R8CV-F	⊗ UMK105CG1R8CW-F	D UMK105CG200JV-F	⇒ UMK105CG220JV-F
↔ UMK105CG220JV-F	⊗ UMK105CG220JVHF	⊣ UMK105CG220KV-F	⊗ UMK105CG221JV-F	⇒ UMK105CG221JVHF

Contact us: [Info@Y-IC.com](mailto:Info@Y-IC.com)

HINZUFÜGEN: Einheit A5-B5 Nr.509, 5 / F Sing Win Fabrikgebäude, 15-17 Shing Yip St, Kwun Tong, Kowloon, HongKong.

Copyright © 2019 YIC International Co., Limited