

TAIYO YUDEN

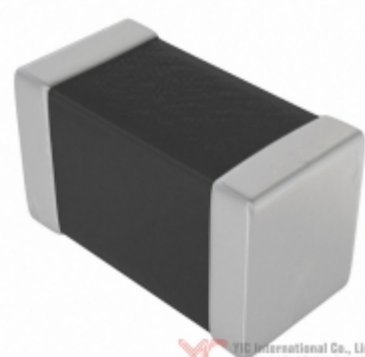


Image may be representation.
See specs for product details.

SMK316BJ153KL-T

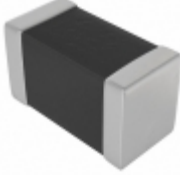
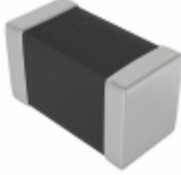
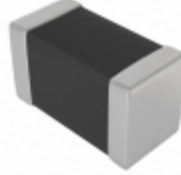
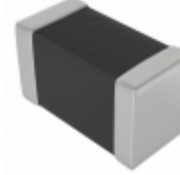
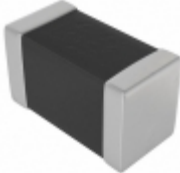
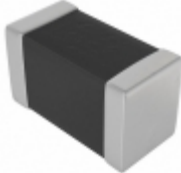
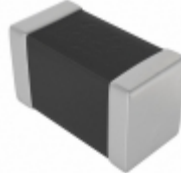
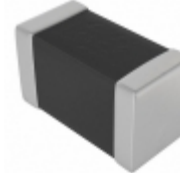
Hersteller-Teilenummer:	SMK316BJ153KL-T
Hersteller / Marke:	Taiyo Yuden
Teil der Beschreibung:	CAP CER 0.015UF 630V X5R 1206
Datenblätter:	1.SMK316BJ153KL-T.pdf 2.SMK316BJ153KL-T.pdf
RoHs Status:	Bleifrei / RoHS-konform
Lagerzustand:	New original, Stock Available.
Liefern von:	Hong Kong
Versandweg:	DHL/Fedex/TNT/UPS/EMS

Spezifikationen

Teilenummer	SMK316BJ153KL-T
Hersteller	Taiyo Yuden
Beschreibung	CAP CER 0.015UF 630V X5R 1206
Kategorie	Kondensatoren > Keramikkondensatoren
Teilstatus	Require For Quote & Check Stock
Serie	M
Spannung - Nennwert	630V
Betriebstemperatur	-55°C ~ 85°C
Bewertungen	-
Befestigungsart	Surface Mount, MLCC
Größe / Dimension	0.126" L x 0.063" W (3.20mm x 1.60mm)
Höhe - eingesteckt (max)	-
Eigenschaften	High Voltage
Kapazität	0.015µF
Toleranz	±10%
Anwendungen	General Purpose
Leiter-Abstand	-
Verpackung / Gehäuse	1206 (3216 Metric)
Temperaturkoeffizient	X5R
Dicke (max)	0.071" (1.80mm)
Leitungsstil	-
Verpackung	Tape & Reel (TR)

SMK316BJ153KL-T ist neu im Original, Suche SMK316BJ153KL-T Datenblätter, PDF, Inventar bei Y-IC.com Online, Bestellen Sie SMK316BJ153KL-T Taiyo Yuden mit Garantie und Vertrauen. Anfrage SMK316BJ153KL-T: Info@Y-IC.com

Sie können auch interessiert sein:

 SMK316BJ222KF-T Taiyo Yuden CAP CER 2200PF 630V X5R 1206	 SMK316BJ102MF-T Taiyo Yuden CAP CER 1000PF 630V X5R 1206	 SMK316BJ103KF-T Taiyo Yuden CAP CER 10000PF 630V X5R 1206	 SMK316BJ222MF-T Taiyo Yuden CAP CER 2200PF 630V X5R 1206
 SMK316BJ152MF-T Taiyo Yuden CAP CER 1500PF 630V X5R 1206	 SMK316BJ223ML-T Taiyo Yuden CAP CER 0.022UF 630V X5R 1206	 SMK316BJ103MF-T Taiyo Yuden CAP CER 10000PF 630V X5R 1206	 SMK316BJ152KF-T Taiyo Yuden CAP CER 1500PF 630V X5R 1206

heiße Teile

Mehr

⊗ SMK316B7222KFHT	↔ SMK316B7222MF-T	⇒ SMK316B7222MFHT	D SMK316B7223KL-T	⇒ SMK316B7223KLHT
⊣ SMK316B7223ML-T	⊗ SMK316B7223MLHT	D SMK316B7332KF-T	⇒ SMK316B7332KFHT	⇒ SMK316B7332MF-T
⊗ SMK316B7332MFHT	⊣ SMK316B7472KF-T	⊗ SMK316B7472KFHT	↔ SMK316B7472MF-T	⇒ SMK316B7472MFHT
D SMK316B7682KF-T	⊗ SMK316B7682KFHT	⊣ SMK316B7682MF-T	⊗ SMK316B7682MFHT	⇒ SMK316BJ102KF-T
⇒ SMK316BJ102MF-T	↔ SMK316BJ103KF-T	⊗ SMK316BJ103MF-T	⊣ SMK316BJ152KF-T	⇒ SMK316BJ152MF-T
↔ SMK316BJ153ML-T	⇒ SMK316BJ222KF-T	D SMK316BJ222MF-T	⊗ SMK316BJ223KL-T	⊣ SMK316BJ223ML-T
⊗ SMK316BJ332KF-T	D SMK316BJ332MF-T	⇒ SMK316BJ472KF-T	↔ SMK316BJ472MF-T	⇒ SMK316BJ682KF-T
⊣ SMK316BJ682MF-T	⊗ SMK316SD101JD-T	↔ SMK325B7223KN-T	⇒ SMK325B7223KNHT	⇒ SMK325B7223MN-T
⊗ SMK325B7223MNHT	⊣ SMK325B7333KN-T	⊗ SMK325B7333KNHT	D SMK325B7333MN-T	⇒ SMK325B7333MNHT
↔ SMK325B7473KN-T	⊗ SMK325B7473KNHT	⊣ SMK325B7473KNHT	⊗ SMK325B7473MN-T	⇒ SMK325B7473MNHT

Contact us: Info@Y-IC.com

HINZUFÜGEN: Einheit A5-B5 Nr.509, 5 / F Sing Win Fabrikgebäude, 15-17 Shing Yip St, Kwun Tong, Kowloon, HongKong.

Copyright © 2019 YIC International Co., Limited