

**TAIYO YUDEN**

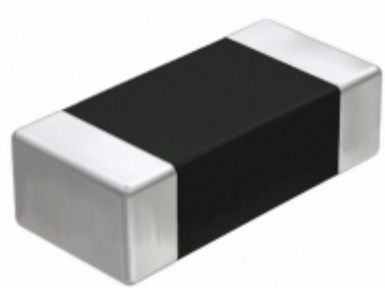


Image may be representation.  
See specs for product details.

## QVS107CG3R3CCHT

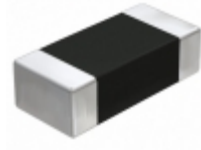
<b>Hersteller-Teilenummer:</b>	QVS107CG3R3CCHT
<b>Hersteller / Marke:</b>	Taiyo Yuden
<b>Teil der Beschreibung:</b>	CAP CER 3.3PF 250V NP0 0603
<b>Datenblätter:</b>	<a href="#">1.QVS107CG3R3CCHT.pdf</a> <a href="#">2.QVS107CG3R3CCHT.pdf</a> <a href="#">3.QVS107CG3R3CCHT.pdf</a> <a href="#">4.QVS107CG3R3CCHT.pdf</a>
<b>RoHs Status:</b>	Bleifrei / RoHS-konform
<b>Lagerzustand:</b>	New original, Stock Available.
<b>Liefern von:</b>	Hong Kong
<b>Versandweg:</b>	DHL/Fedex/TNT/UPS/EMS

### Spezifikationen

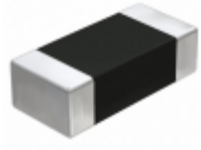
Teilenummer	QVS107CG3R3CCHT
Hersteller	Taiyo Yuden
Beschreibung	CAP CER 3.3PF 250V NP0 0603
Kategorie	Kondensatoren > Keramikkondensatoren
Teilstatus	Require For Quote & Check Stock
Serie	V
Spannung - Nennwert	250V
Betriebstemperatur	-55°C ~ 125°C
Bewertungen	-
Befestigungsart	Surface Mount, MLCC
Größe / Dimension	0.063" L x 0.031" W (1.60mm x 0.80mm)
Höhe - eingesteckt (max)	-
Eigenschaften	-
Kapazität	3.3pF
Toleranz	±0.25pF
Anwendungen	Automotive
Leiter-Abstand	-
Verpackung / Gehäuse	0603 (1608 Metric)
Temperaturkoeffizient	C0G, NP0
Dicke (max)	0.031" (0.80mm)
Leitungsstil	-
Verpackung	Tape & Reel (TR)

QVS107CG3R3CCHT ist neu im Original, Suche QVS107CG3R3CCHT Datenblätter, PDF, Inventar bei Y-IC.com Online, Bestellen Sie QVS107CG3R3CCHT Taiyo Yuden mit Garantie und Vertrauen. Anfrage QVS107CG3R3CCHT: Info@Y-IC.com

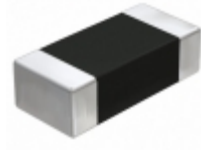
Sie können auch interessiert sein:



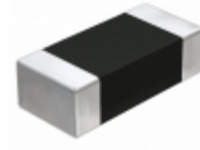
**QVS107CG4R7CCHT**  
Taiyo Yuden  
CAP CER 4.7PF 250V NP0 0603



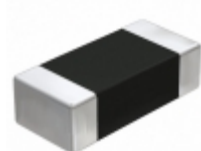
**QVS107CG3R3BCHT**  
Taiyo Yuden  
CAP CER 3.3PF 250V NP0 0603



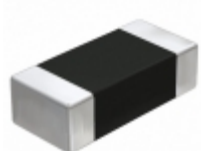
**QVS107CG2R7CCHT**  
Taiyo Yuden  
CAP CER 2.7PF 250V NP0 0603



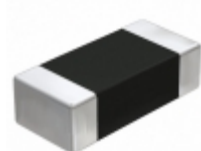
**QVS107CG3R9CCHT**  
Taiyo Yuden  
CAP CER 3.9PF 250V NP0 0603



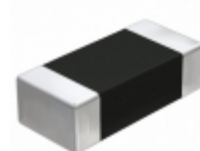
**QVS107CG2R7BCHT**  
Taiyo Yuden  
CAP CER 2.7PF 250V NP0 0603



**QVS107CG390JCHT**  
Taiyo Yuden  
CAP CER 39PF 250V NP0 0603



**QVS107CG470JCHT**  
Taiyo Yuden  
CAP CER 47PF 250V NP0 0603



**QVS107CG3R9BCHT**  
Taiyo Yuden  
CAP CER 3.9PF 250V NP0 0603

### heiße Teile

Mehr

⊕ QVS107CG0R8BCHT	↔ QVS107CG0R8CCHT	⇒ QVS107CG100GCHT	D QVS107CG100JCHT	↔ QVS107CG100JCHT
⊕ QVS107CG101JCHT	⊕ QVS107CG120JCHT	D QVS107CG120JCHT	⇒ QVS107CG150JCHT	↔ QVS107CG150JCHT
⊕ QVS107CG1R2BCHT	⊕ QVS107CG1R2CCHT	⊕ QVS107CG1R5BCHT	↔ QVS107CG1R5CCHT	↔ QVS107CG1R8BCHT
D QVS107CG1R8CCHT	⊕ QVS107CG220JCHT	⊕ QVS107CG220JCHT	⊕ QVS107CG2R2BCHT	↔ QVS107CG2R2CCHT
⇒ QVS107CG2R7BCHT	↔ QVS107CG2R7CCHT	⊕ QVS107CG390JCHT	⊕ QVS107CG390JCHT	↔ QVS107CG3R3BCHT
↔ QVS107CG3R9BCHT	⇒ QVS107CG3R9CCHT	D QVS107CG470JCHT	⊕ QVS107CG4R7BCHT	⊕ QVS107CG4R7CCHT
⊕ QVS107CG560JCHT	D QVS107CG560JCHT	⇒ QVS107CG5R6CCHT	↔ QVS107CG5R6DCHT	↔ QVS107CG680JCHT
⊕ QVS107CG680JCHT	⊕ QVS107CG6R8CCHT	↔ QVS107CG6R8DCHT	⇒ QVS107CG6R8DCHT	↔ QVS107CG750JCHT
⊕ QVS107CG750JCHT	⊕ QVS107CG820JCHT	⊕ QVS107CG820JCHT	D QVS107CG8R2CCHT	↔ QVS107CG8R2DCHT
↔ QVS107CG8R2DCHT	⊕ QVS107CG910JCHT	⊕ QVS107CG910JCHT	⊕ QVS212CG100JDHT	↔ QVS212CG101JDHT

Contact us: [Info@Y-IC.com](mailto:Info@Y-IC.com)

HINZUFÜGEN: Einheit A5-B5 Nr.509, 5 / F Sing Win Fabrikgebäude, 15-17 Shing Yip St, Kwun Tong, Kowloon, HongKong.

Copyright © 2019 YIC International Co., Limited