



BYS10-45

Hersteller-Teilenummer: [BYS10-45](#)

Hersteller / Marke: Vishay

Teil der Beschreibung: [BYS10-45 Vishay](#)

RoHs Status:

Lagerzustand: New original, 9600 pcs Stock Available.

Lieferroute von: Hong Kong

Versandweg: DHL/Fedex/TNT/UPS/EMS

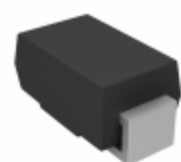
Image may be representation.
See specs for product details.

Spezifikationen

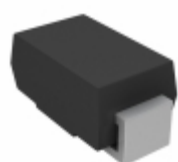
Teilenummer	BYS10-45
Hersteller	Vishay
Beschreibung	BYS10-45 Vishay
Kategorie	Integrierte Schaltungen (ICs) > Specialized Hot ICs
Teilstatus	9600 pcs Stock
Serie	-
RoHs Status	Lead free / RoHS Compliant
Bedingung	New Original Stock
Garantie	100% Perfect Functions
Vorlaufzeit	2-3days after payment.
Zahlung	PayPal / Telegraphic Transfer / Western Union
Versand per	DHL / Fedex / UPS
Hafen	HongKong
Anfrage-E-Mail	Info@Y-IC.com

BYS10-45 ist neu im Original, Suche [BYS10-45 Datenblätter](#), PDF, Inventar bei [Y-IC.com Online](#), Bestellen Sie [BYS10-45](#) mit Garantie und Vertrauen. Anfrage [BYS10-45](#): Info@Y-IC.com

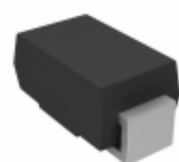
Sie können auch interessiert sein:



BYS10-35HE3/TR3
Vishay / Semiconductor - Diodes Division
DIODE SCHOTTKY 35V 1.5A
DO214AC



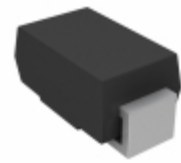
BYS10-35HE3_A/H
Electro-Films (EFI) / Vishay
DIODE SCHOTTKY 35V 1A
DO214AC



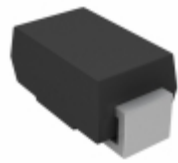
BYS10-35HE3/TR3
Electro-Films (EFI) / Vishay
DIODE SCHOTTKY 35V 1.5A
DO214AC



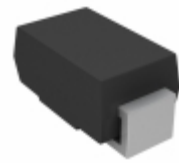
BYS10-45-E3
VISHAY
[BYS10-45-E3 VISHAY](#)



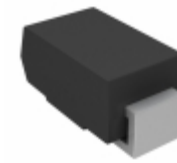
BYS10-35HE3/TR
Electro-Films (EFI) / Vishay
DIODE SCHOTTKY 35V 1.5A
DO214AC



BYS10-45-E3/TR
Vishay / Semiconductor - Diodes Division
DIODE SCHOTTKY 45V 1.5A
DO214AC



BYS10-45-E3/TR3
Electro-Films (EFI) / Vishay
DIODE SCHOTTKY 45V 1.5A
DO214AC



BYS10-35HE3/TR
Vishay / Semiconductor - Diodes Division
DIODE SCHOTTKY 35V 1.5A
DO214AC

heiße Teile

Mehr

⚙️ BYS10-25	🚚 BYS10-25-E3	➡️ BYS10-25-E3/TR	D BYS10-25-E3/TR	👉 BYS10-25-E3/TR3
⌄️ BYS10-25-E3/TR3	⚙️ BYS10-25/TR	D BYS10-35	➡️ BYS10-35-E3	👉 BYS10-35-E3/TR
⚙️ BYS10-35-E3/TR	⌄️ BYS10-35-TR	⚙️ BYS10-35/TR	🚚 BYS10-35HE3/TR	👉 BYS10-35HE3/TR
D BYS10-45-E3	⚙️ BYS10-45-E3/TR	⌄️ BYS10-45-E3/TR	⚙️ BYS10-45-E3/TR3	👉 BYS10-45-E3/TR3
➡️ BYS10-45-TR	🚚 BYS1045-E3/TR3	⚙️ BYS11-90	⌄️ BYS11-90-E3/TR	👉 BYS11-90-E3/TR
🚚 BYS11-90-TR	➡️ BYS12-90	D BYS12-90-E3/TR	⚙️ BYS12-90-E3/TR	⌄️ BYS12-90-TR
⚙️ BYS12-90HE3/TR	D BYS12-90HE3/TR	➡️ BYS459B-1500E3/45	🚚 BYS459B-1500E3/45	👉 BYS459B-1500SE3/45
⌄️ BYS459B-1500SE3/45	⚙️ BYS75-50	🚚 BYS93-50	➡️ BYS97-40	👉 BYS97-50
⚙️ GJM0335C1E4R7CB01D	⌄️ GS2011MIES	⚙️ L010-0103-00	D MC74HC125AFEL	👉 MCP121T-270E/LB
🚚 MXL1013DS8	⚙️ PD7M441HN	⌄️ TPS62051DGS	⚙️ TS12001ITD1022T	👉 XR16L784CVTR-F

Contact us: Info@Y-IC.com

HINZUFÜGEN: Einheit A5-B5 Nr.509, 5 / F Sing Win Fabrikgebäude, 15-17 Shing Yip St, Kwun Tong, Kowloon, HongKong.
Copyright © 2019 YIC International Co., Limited