

**TAIYO YUDEN**

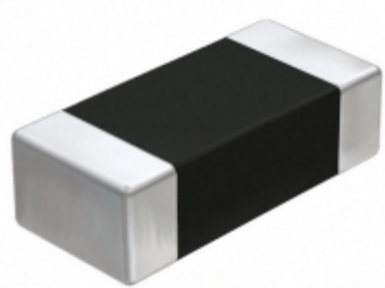


Image may be representation.  
See specs for product details.

## EMK107ABJ225KAHT

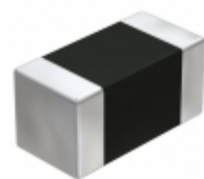
|                                |  |
|--------------------------------|--|
| <b>Hersteller-Teilenummer:</b> | EMK107ABJ225KAHT   |
| <b>Hersteller / Marke:</b>     | Taiyo Yuden  |
| <b>Teil der Beschreibung:</b>  | CAP CER 2.2UF 16V X5R 0603   |
| <b>Datenblätter:</b>           | <a href="#">1.EMK107ABJ225KAHT.pdf</a><br><a href="#">2.EMK107ABJ225KAHT.pdf</a><br><a href="#">3.EMK107ABJ225KAHT.pdf</a><br><a href="#">4.EMK107ABJ225KAHT.pdf</a> |
| <b>RoHs Status:</b>            | Bleifrei / RoHS-konform  |
| <b>Lagerzustand:</b>           | New original, Stock Available.   |
| <b>Lieferr von:</b>            | Hong Kong  |
| <b>Versandweg:</b>             | DHL/Fedex/TNT/UPS/EMS  |

### Spezifikationen

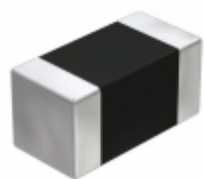
|                          |                                       |
|--------------------------|---------------------------------------|
| Teilenummer              | EMK107ABJ225KAHT                      |
| Hersteller               | Taiyo Yuden                           |
| Beschreibung             | CAP CER 2.2UF 16V X5R 0603            |
| Kategorie                | Kondensatoren > Keramikkondensatoren  |
| Teilstatus               | Require For Quote & Check Stock       |
| Serie                    | M                                     |
| Spannung - Nennwert      | 16V                                   |
| Betriebstemperatur       | -55°C ~ 85°C                          |
| Bewertungen              | AEC-Q200                              |
| Befestigungsart          | Surface Mount, MLCC                   |
| Größe / Dimension        | 0.063" L x 0.031" W (1.60mm x 0.80mm) |
| Höhe - eingesteckt (max) | -                                     |
| Eigenschaften            | -                                     |
| Kapazität                | 2.2µF                                 |
| Toleranz                 | ±10%                                  |
| Anwendungen              | Automotive                            |
| Leiter-Abstand           | -                                     |
| Verpackung / Gehäuse     | 0603 (1608 Metric)                    |
| Temperaturkoeffizient    | X5R                                   |
| Dicke (max)              | 0.035" (0.90mm)                       |
| Leitungsstil             | -                                     |
| Verpackung               | Tape & Reel (TR)                      |

EMK107ABJ225KAHT ist neu im Original, Suche EMK107ABJ225KAHT Datenblätter, PDF, Inventar bei Y-IC.com Online, Bestellen Sie EMK107ABJ225KAHT Taiyo Yuden mit Garantie und Vertrauen. Anfrage EMK107ABJ225KAHT: Info@Y-IC.com

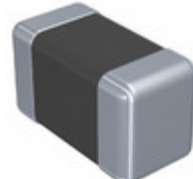
Sie können auch interessiert sein:



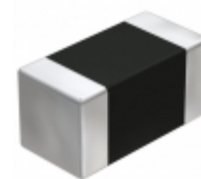
**EMK105SD222KV-F**  
Taiyo Yuden  
CAP CER 2200PF 16V 0402



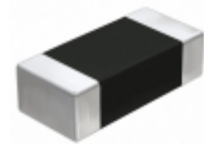
**EMK105SD272JV-F**  
Taiyo Yuden  
CAP CER 2700PF 16V 0402



**EMK107ABJ475MA-T**  
Taiyo Yuden  
CAP CER 4.7UF 16V X5R 0603



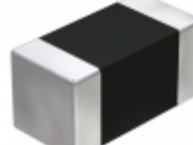
**EMK105SD222JV-F**  
Taiyo Yuden  
CAP CER 2200PF 16V 0402



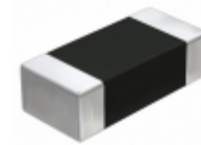
**EMK107B7104KA-T**  
Taiyo Yuden  
CAP CER 0.1UF 16V X7R 0603



**EMK105SD272KV-F**  
Taiyo Yuden  
CAP CER 2700PF 16V 0402



**EMK105SD182KV-F**  
Taiyo Yuden  
CAP CER 1800PF 16V 0402



**EMK107B7104KA-L**  
Taiyo Yuden  
CAP CER 0.1UF 16V X7R 0603

### heiße Teile

Mehr

|                    |                    |                    |                    |                    |
|--------------------|--------------------|--------------------|--------------------|--------------------|
| ⊗ EMK105BJ104MV-F  | ↔ EMK105BJ105KV-F  | ⇒ EMK105BJ105KVHF  | D EMK105BJ105MV-F  | ↔ EMK105BJ224KV-F  |
| ⊣ EMK105BJ224KVHF  | ⊗ EMK105BJ224MV-F  | D EMK105BJ333KV-F  | ⇒ EMK105BJ473MV-F  | ↔ EMK105BJ474KP-F  |
| ⊗ EMK105BJ474MP-F  | ⊣ EMK105BJ683KV-F  | ⊗ EMK105C6105KV-F  | ↔ EMK105C6105MV-F  | ↔ EMK105CC6225MV-F |
| D EMK105F104ZV-F   | ⊗ EMK105F473ZV-F   | ⊣ EMK105SD152JV-F  | ⊗ EMK105SD152KV-F  | ↔ EMK105SD182JV-F  |
| ⇒ EMK105SD182KV-F  | ↔ EMK105SD222JV-F  | ⊗ EMK105SD222KV-F  | ⊣ EMK105SD272JV-F  | ↔ EMK105SD272KV-F  |
| ↔ EMK107ABJ225MAHT | ⇒ EMK107ABJ475KA-T | D EMK107B7104KA-L  | ⊗ EMK107B7104KA-T  | ⊣ EMK107B7104MA-T  |
| ⊗ EMK107B7105KA-T  | D EMK107B7105KAHT  | ⇒ EMK107B7105MA-T  | ↔ EMK107B7105MAHT  | ↔ EMK107B7223KA-T  |
| ⊣ EMK107B7224KA-T  | ⊗ EMK107B7224MA-T  | ↔ EMK107B7333KA-T  | ⇒ EMK107B7333MA-T  | ↔ EMK107B7473KA-T  |
| ⊗ EMK107B7473KAHT  | ⊣ EMK107B7473MA-T  | ⊗ EMK107B7474KA-T  | D EMK107B7474KAHT  | ↔ EMK107B7474MA-T  |
| ↔ EMK107B7683KA-T  | ⊗ EMK107B7683MA-T  | ⊣ EMK107BB7225KA-T | ⊗ EMK107BB7225MA-T | ↔ EMK107BBJ106MA-T |

Contact us: [Info@Y-IC.com](mailto:Info@Y-IC.com)

HINZUFÜGEN: Einheit A5-B5 Nr.509, 5 / F Sing Win Fabrikgebäude, 15-17 Shing Yip St, Kwun Tong, Kowloon, HongKong.

Copyright © 2019 YIC International Co., Limited