




| | | |
|---|--------------------------------|---|
|  | MAX6765TTSD3+ | |
| | Hersteller-Teilenummer: | MAX6765TTSD3+ |
|  <p>Not Actual Photo YIC International Co., Limited.</p> | Hersteller / Marke: | Maxim Integrated |
| | Teil der Beschreibung: | IC SUPERVISOR |
| <p>Image may be representation. See specs for product details.</p> | Datenblätter: |  MAX6765TTSD3+.pdf |
| | RoHS Status: | Bleifrei / RoHS-konform |
| | Lagerzustand: | New original, Stock Available. |
| | Liefern von: | Hong Kong |
| | Versandweg: | DHL/Fedex/TNT/UPS/EMS |

Spezifikationen

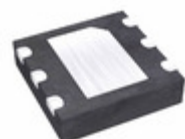
| | |
|---|--|
| Teilenummer | MAX6765TTSD3+ |
| Hersteller | Maxim Integrated |
| Beschreibung | IC SUPERVISOR |
| Kategorie | Integrierte Schaltungen (ICs) > PMIC - Vorgesetzte |
| Teilstatus | Require For Quote & Check Stock |
| Spannung - Schwellen | 2.888V |
| Art | Regulator/Supervisor |
| Supplier Device-Gehäuse | 6-TDFN-EP (3x3) |
| Serie | - |
| Zurücksetzen Timeout | 35 ms Minimum |
| zurückstellen | Active Low |
| Verpackung / Gehäuse | 6-WDFN Exposed Pad |
| Ausgabe | Open Drain or Open Collector |
| Betriebstemperatur | -40°C ~ 125°C (TA) |
| Anzahl der überwachten Spannungen | 1 |
| Befestigungsart | Surface Mount |
| Feuchtigkeitsempfindlichkeitsniveau (MSL) | Vendor Undefined |
| Bleifreier Status / RoHS-Status | Lead free / RoHS Compliant |
| detaillierte Beschreibuna | Supervisor Open Drain or Open Collector 1 Channel 6- |

MAX6765TTSD3+ Electronic Components ist ein 100% neues Original von YIC Distributor, MAX6765TTSD3+-Datenblätter durchsuchen, PDF, Inventar bei Y-IC.com Online, MAX6765TTSD3+ Maxim Integrated mit Garantie und Vertrauen bestellen. Versand per DHL / FedEx / TNT / UPS Express. Unterstützung der Zahlung mit telegrafischer Überweisung (T / T) oder PayPal.

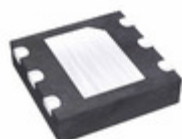
RFQ MAX6765TTSD3+ E-Mail: Info@Y-IC.com

Sie können auch interessiert

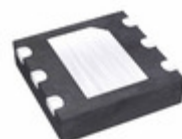
sein:



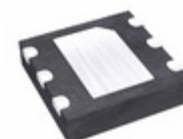
MAX6765TTSD2/V+T
Maxim Integrated
IC REG W/SUPERVISOR AUTO
6TDFN



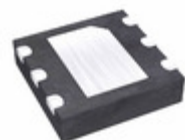
MAX6766TTLDO+T
Maxim Integrated
IC REG LINEAR 5V 6-TDFN



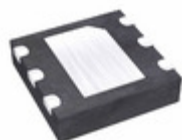
MAX6766TTSD2+T
Maxim Integrated
IC REG LINEAR 3.3V 6-TDFN



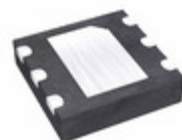
MAX6765TTTD4+T
Maxim Integrated
IC REG LINEAR 3.3V 6-TDFN



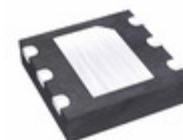
MAX6765TTSD2+T
Maxim Integrated
IC REG LINEAR 3.3V 6-TDFN



MAX6766TTLDO+T
Maxim Integrated
IC REG LINEAR 5V 6-TDFN



MAX6765TTWD2+T
Maxim Integrated
IC REG LINEAR 1.8V 6-TDFN



MAX6765TTSD1+T
Maxim Integrated
IC REG LINEAR 3.3V 6-TDFN

Verwandtes Hot-Keyword

Mehr

| | | | | |
|--------------------------------|---------------------------|----------------------------|---------------------|--------------------------------|
| MAX6765TTSD3+ Maxim Integrated | MAX6765TTSD3+ Datenblatt | MAX6765TTSD3+-Datenblätter | MAX6765TTSD3+ PDF | Maxim Integrated MAX6765TTSD3+ |
| MAX6765TTSD3+ Electronic | MAX6765TTSD3+-Komponenten | MAX6765TTSD3+-Verteiler | MAX6765TTSD3+-Bild | MAX6765TTSD3+-Teil |
| MAX6765TTSD3+ Preis | MAX6765TTSD3+ Hersteller | MAX6765TTSD3+ Bild | MAX6765TTSD3+ Aktie | MAX6765TTSD3+ Inventar |
| MAX6765TTSD3+ Neu | MAX6765TTSD3+ Original | MAX6765TTSD3+ garantiert | MAX6765TTSD3+ RFQ | MAX6765TTSD3+ Online bestellen |

Contact us: Info@Y-IC.com

HINZUFÜGEN: Einheit A5-B5 Nr.509, 5 / F Sing Win Fabrikgebäude, 15-17 Shing Yip St, Kwun Tong, Kowloon, HongKong.

Copyright © 2019 YIC International Co., Limited