



## GRM2195C1H122FA01D

<b>Hersteller-Teilenummer:</b>	GRM2195C1H122FA01D
<b>Hersteller / Marke:</b>	MURATA
<b>Teil der Beschreibung:</b>	GRM2195C1H122FA01D MURATA
<b>RoHs Status:</b>	
<b>Lagerzustand:</b>	New original, 4000 pcs Stock Available.
<b>Lieferr von:</b>	Hong Kong
<b>Versandweg:</b>	DHL/Fedex/TNT/UPS/EMS

Image may be representation.  
See specs for product details.

### Spezifikationen

Teilenummer	GRM2195C1H122FA01D
Hersteller	MURATA
Beschreibung	GRM2195C1H122FA01D MURATA
Kategorie	Integrierte Schaltungen (ICs) > Specialized Hot ICs
Teilstatus	4000 pcs Stock
Serie	-
RoHs Status	Lead free / RoHS Compliant
Bedingung	New Original Stock
Garantie	100% Perfect Functions
Vorlaufzeit	2-3days after payment.
Zahlung	PayPal / Telegraphic Transfer / Western Union
Versand per	DHL / Fedex / UPS
Hafen	HongKong
Anfrage-E-Mail	Info@Y-IC.com

GRM2195C1H122FA01D ist neu im Original, Suche GRM2195C1H122FA01D Datenblätter, PDF, Inventar bei Y-IC.com Online, Bestellen Sie GRM2195C1H122FA01D mit Garantie und Vertrauen. Anfrage GRM2195C1H122FA01D: Info@Y-IC.com

Sie können auch interessiert sein:



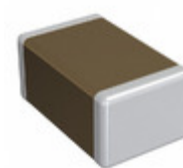
**GRM2195C1H113JA01D**  
Murata Electronics  
CAP CER 0.011UF 50V  
COG/NP0 0805



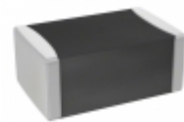
**GRM2195C1H123JA01D**  
Murata Electronics  
CAP CER 0.012UF 50V  
COG/NP0 0805



**GRM2195C1H123FA01D**  
Murata Electronics  
CAP CER 0.012UF 50V  
COG/NP0 0805



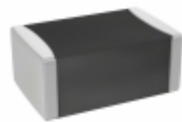
**GRM2195C1H122JA01D**  
Murata Electronics  
CAP CER 1200PF 50V COG/NP0  
0805



**GRM2195C1H123GA01D**  
Murata Electronics  
CAP CER 0.012UF 50V  
COG/NP0 0805



**GRM2195C1H133JA01D**  
Murata Electronics  
CAP CER 0.013UF 50V  
COG/NP0 0805



**GRM2195C1H103GA01D**  
Murata Electronics  
CAP CER 10000PF 50V  
COG/NP0 0805



**GRM2195C1H103FA01D**  
Murata Electronics  
CAP CER 10000PF 50V  
COG/NP0 0805

### heiße Teile

Mehr

⚙ GRM216R71H332KA01D	↔ GRM216R71H332KA01J	⇒ GRM216R71H391KA01D	D GRM216R71H392KA01D	⇒ GRM216R71H392KA01J
⊥ GRM216R71H471KA01D	⚙ GRM216R71H471KA01J	D GRM216R71H472KA01D	⇒ GRM216R71H472KA01J	⇒ GRM216R71H561KA01D
⚙ GRM216R71H562KA01D	⊥ GRM216R71H681KA01D	⚙ GRM216R71H682KA01D	↔ GRM216R71H821K	⇒ GRM216R71H821KA01D
D GRM216R71H822JA01J	⚙ GRM216R71H822KA01D	⊥ GRM2192C1H562JA01D	⚙ GRM2192C2D180JV01D	⇒ GRM2195C1H102JA01D
⇒ GRM2195C1H103FA01D	↔ GRM2195C1H103GA01D	⚙ GRM2195C1H103JA01D	⊥ GRM2195C1H103JA01J	⇒ GRM2195C1H113JA01D
↔ GRM2195C1H123FA01D	⇒ GRM2195C1H123GA01D	D GRM2195C1H123JA01D	⚙ GRM2195C1H133JA01D	⊥ GRM2195C1H152JA01D
⚙ GRM2195C1H153GA01D	D GRM2195C1H153JA01D	⇒ GRM2195C1H472JA01D	↔ GRM2195C1H512JA01D	⇒ GRM2195C1H562FA01D
⊥ GRM2195C1H562JA01D	⚙ GRM2195C1H562JA01J	↔ GRM2195C1H562JA01J	⇒ GRM2195C1H622JA01D	⇒ GRM2195C1H682FA01D
⚙ GRM2195C1H682GA01D	⊥ GRM2195C1H682JA01D	⚙ GRM2195C1H752JA01D	D GRM2195C1H821JA01D	⇒ GRM2195C1H822FA01D
↔ GRM2195C1H822JA01D	⚙ GRM2195C1H912JA01D	⊥ GRM2195C2A100JZ01D	⚙ GRM2195C2A102GA01D	⇒ GRM2195C2A102JA01D

Contact us: [Info@Y-IC.com](mailto:Info@Y-IC.com)

HINZUFÜGEN: Einheit A5-B5 Nr.509, 5 / F Sing Win Fabrikgebäude, 15-17 Shing Yip St, Kwun Tong, Kowloon, HongKong.  
Copyright © 2019 YIC International Co., Limited