



LAPIS Kioxia

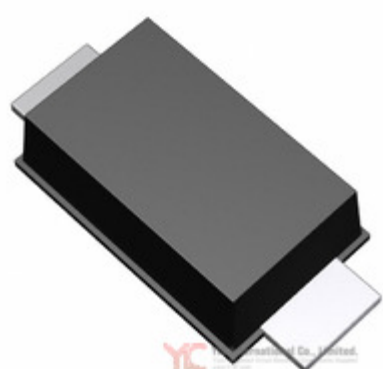


Image may be representation.
See specs for product details.

RB168MM150TR

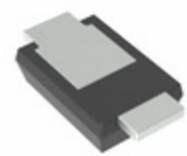
Hersteller-Teilenummer:	RB168MM150TR
Hersteller / Marke:	LAPIS Semiconductor
Teil der Beschreibung:	DIODE SCHOTTKY 150V 1A PMDU
Datenblätter:	RB168MM150TR.pdf
RoHs Status:	Bleifrei / RoHS-konform
Lagerzustand:	New original, 3220 pcs Stock Available.
Liefern von:	Hong Kong
Versandweg:	DHL/Fedex/TNT/UPS/EMS

Spezifikationen

Teilenummer	RB168MM150TR
Hersteller	LAPIS Semiconductor
Beschreibung	DIODE SCHOTTKY 150V 1A PMDU
Kategorie	Diskrete Halbleiterprodukte > Dioden-Gleichrichter-
Teilstatus	3220 pcs Stock
Serie	-
Befestigungsart	Surface Mount
Verpackung / Gehäuse	SOD-123F
Supplier Device-Gehäuse	PMDU
Diodentyp	Schottky
Strom - Richt (Io)	1A
Spannung - Forward (Vf) (Max) @ If	840mV @ 1A
Strom - Sperrleckstrom @ Vr	4µA @ 150V
Spannung - Sperr (Vr) (max)	150V
Geschwindigkeit	Fast Recovery = 200mA (Io)
Betriebstemperatur - Anschluss	150°C (Max)
Kapazität @ Vr, F	-
Verpackung	Tape & Reel (TR)

RB168MM150TR ist neu im Original, Suche RB168MM150TR Datenblätter, PDF, Inventar bei Y-IC.com Online, Bestellen Sie RB168MM150TR LAPIS Semiconductor mit Garantie und Vertrauen. Anfrage RB168MM150TR: Info@Y-IC.com

Sie können auch interessiert sein:



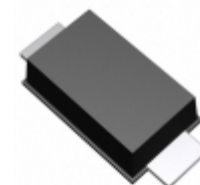
RB168VAM150TR
LAPIS Semiconductor
SCHOTTKY BARRIER DIODE



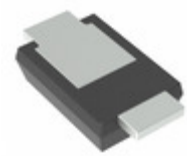
RB168MM150TF
LAPIS Semiconductor
RB168MM150TF ROHM



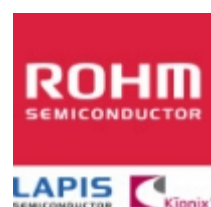
RB168VYM-30FH
LAPIS Semiconductor
RB168VYM-30FH ROHM



RB168MM100TR
LAPIS Semiconductor
DIODE SCHOTTKY 100V 1A
SOD123FL



RB168VAM100TR
LAPIS Semiconductor
SCHOTTKY BARRIER DIODE



RB168VYM-40FH
LAPIS Semiconductor
RB168VYM-40FH ROHM



RB168MM-60TR
LAPIS Semiconductor
DIODE SCHOTTKY 60V 1A
PMDU



RB168VYM-30FHTR
LAPIS Semiconductor
SCHOTTKY BARRIER DIODE

heiße Teile

Mehr

RB162MM-30	RB162MM-30TF	RB162MM-40	RB162MM-40TF	RB162MM-60
RB162MM-60TF	RB162MM-60TR	RB162VA-20	RB162VA-20TR	RB162VAM-20TR
RB168L-30DD	RB168L-30TF	RB168L-40	RB168L-60	RB168L-60TE25
RB168L-60TF	RB168L100	RB168L100DD	RB168L150	RB168L150DD
RB168L150TE25	RB168LAM-30	RB168LAM-30TF	RB168LAM-40	RB168LAM-60
RB168LAM-60TF	RB168LAM100	RB168LAM100TF	RB168LAM150	RB168LAM150TF
RB168M-40	RB168M-40TF	RB168M-40TR	RB168M-60	RB168M-60TF
RB168M-60TR	RB168M150DD	RB168M150TR	RB168MM-30TF	RB168MM-40
RB168MM-40TF	RB168MM-40TR	RB168MM-60	RB168MM-60TF	RB168MM100
RB168MM100TR	RB168MM150	RB168MM150TF	RB168VYM-30FH	RB168VYM-40FH

Contact us: Info@Y-IC.com

HINZUFÜGEN: Einheit A5-B5 Nr.509, 5 / F Sing Win Fabrikgebäude, 15-17 Shing Yip St, Kwun Tong, Kowloon, HongKong.

Copyright © 2019 YIC International Co., Limited