



LAPIS Semiconductor

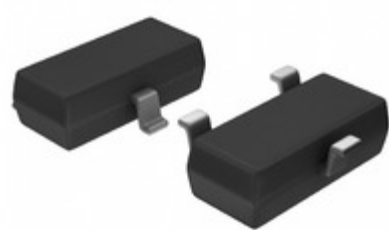


Image may be representation.
See specs for product details.

DTC115TKAT146

Hersteller-Teilenummer:	DTC115TKAT146
Hersteller / Marke:	LAPIS Semiconductor
Teil der Beschreibung:	TRANS PREBIAS NPN 200MW SMT3
Datenblätter:	DTC115TKAT146.pdf
RoHs Status:	Bleifrei / RoHS-konform
Lagerzustand:	New original, 8595 pcs Stock Available.
Liefern von:	Hong Kong
Versandweg:	DHL/Fedex/TNT/UPS/EMS

Spezifikationen

Teilenummer	DTC115TKAT146
Hersteller	LAPIS Semiconductor
Beschreibung	TRANS PREBIAS NPN 200MW SMT3
Kategorie	Diskrete Halbleiterprodukte > Transistoren-Bipolar
Teilstatus	8595 pcs Stock
Serie	-
Befestigungsart	Surface Mount
Leistung - max	200mW
Verpackung / Gehäuse	TO-236-3, SC-59, SOT-23-3
Supplier Device-Gehäuse	SMT3
Transistor-Typ	NPN - Pre-Biased
Strom - Kollektor (Ic) (max)	100mA
Spannung - Kollektor-Emitter-Durchbruch (max)	50V
VCE Sättigung (Max) @ Ib, Ic	300mV @ 100µA, 1mA
Strom - Collector Cutoff (Max)	500nA (ICBO)
DC Stromgewinn (HFE) (Min) @ Ic, VCE	100 @ 1mA, 5V
Frequenz - Übergang	250MHz
Widerstand - Base (R1) (Ohm)	100k
Widerstand - Emitter-Basis (R2) (Ohm)	-
Verpackung	Tape & Reel (TR)

DTC115TKAT146 ist neu im Original, Suche DTC115TKAT146 Datenblätter, PDF, Inventar bei Y-IC.com Online, Bestellen Sie DTC115TKAT146 LAPIS Semiconductor mit Garantie und Vertrauen. Anfrage DTC115TKAT146: Info@Y-IC.com

Sie können auch interessiert sein:



DTC115TM
ROHM
DTC115TM ROHM



DTC115TET1G
AMI Semiconductor / ON
Semiconductor
TRANS PREBIAS NPN 0.2W
SC75



DTC115TK
ROHM
ROHM SOT-23SC-59SMT3



DTC115TKR-R
DIODES
DIODES SOT-23



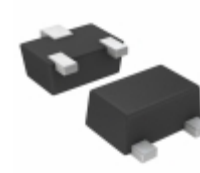
DTC115TM T2L
ROHM
DTC115TM T2L ROHM



DTC115TETL
LAPIS Semiconductor
TRANS PREBIAS NPN 150MW
EMT3



DTC115TKA
ROHM
DTC115TKA ROHM



DTC115TMT2L
LAPIS Semiconductor
TRANS PREBIAS NPN 150MW
VMT3

heiße Teile

Mehr

DTC114YU	DTC114YUA	DTC114YUA-TP	DTC114YUAT106	DTC114YUK
DTC115EE	DTC115EEBTL	DTC115EET	DTC115EET1G	DTC115EETL
DTC115EKA	DTC115EKAT146	DTC115EM	DTC115EMT2L	DTC115ES
DTC115EU	DTC115EUA	DTC115EUA106	DTC115EUAT106	DTC115EUT106
DTC115GKAT146	DTC115TE	DTC115TELT	DTC115TETL	DTC115TKA
DTC115TM	DTC115TMT2L	DTC115TU	DTC115TUA	DTC115TUAT106
DTC123EE	DTC123EET1	DTC123EETL	DTC123EK	DTC123EKA
DTC123EKAT146	DTC123EM	DTC123EMT2L	DTC123EU	DTC123EUA
DTC123EUAFST106	DTC123EUAT106	DTC123JE	DTC123JET1	DTC123JET1G
DTC123JETL	DTC123JK	DTC123JKA	DTC123JKAT146	DTC123JM

Contact us: Info@Y-IC.com

HINZUFÜGEN: Einheit A5-B5 Nr.509, 5 / F Sing Win Fabrikgebäude, 15-17 Shing Yip St, Kwun Tong, Kowloon, HongKong.

Copyright © 2019 YIC International Co., Limited