



## SMAJ64A-F

<b>Hersteller-Teilenummer:</b>	SMAJ64A-F
<b>Hersteller / Marke:</b>	LITEON
<b>Teil der Beschreibung:</b>	SMAJ64A-F LITEON
<b>RoHs Status:</b>	
<b>Lagerzustand:</b>	New original, 24647 pcs Stock Available.
<b>Lieferr von:</b>	Hong Kong
<b>Versandweg:</b>	DHL/Fedex/TNT/UPS/EMS

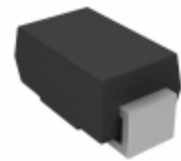
Image may be representation.  
See specs for product details.

### Spezifikationen

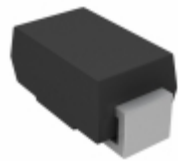
Teilenummer	SMAJ64A-F
Hersteller	LITEON
Beschreibung	SMAJ64A-F LITEON
Kategorie	Integrierte Schaltungen (ICs) > Specialized Hot ICs
Teilstatus	24647 pcs Stock
Serie	SMA
RoHs Status	Lead free / RoHS Compliant
Bedingung	New Original Stock
Garantie	100% Perfect Functions
Vorlaufzeit	2-3days after payment.
Zahlung	PayPal / Telegraphic Transfer / Western Union
Versand per	DHL / Fedex / UPS
Hafen	HongKong
Anfrage-E-Mail	Info@Y-IC.com

SMAJ64A-F ist neu im Original, Suche SMAJ64A-F Datenblätter, PDF, Inventar bei Y-IC.com Online, Bestellen Sie SMAJ64A-F mit Garantie und Vertrauen. Anfrage SMAJ64A-F: Info@Y-IC.com

Sie können auch interessiert sein:



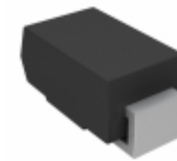
**SMAJ64A-E3/61**  
Vishay / Semiconductor - Diodes Division  
TVS DIODE 64VWM 103VC SMA



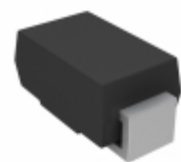
**SMAJ64A-E3/61**  
Electro-Films (EFI) / Vishay  
TVS DIODE 64V 103V DO214AC



**SMAJ64A-TP**  
Micro Commercial Components (MCC)  
TVS DIODE 64VWM 103VC SMA



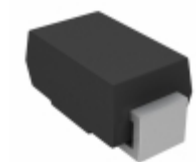
**SMAJ64A-M3/61**  
Electro-Films (EFI) / Vishay  
TVS DIODE 64V 103V DO214AC



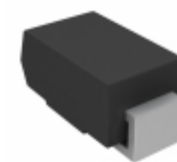
**SMAJ64A-M3/5A**  
Electro-Films (EFI) / Vishay  
TVS DIODE 64V 103V DO214AC



**SMAJ64A-E3/63**  
VISHAY  
SMAJ64A-E3/63 VISHAY



**SMAJ64A-M3/61**  
Vishay / Semiconductor - Diodes Division  
TVS DIODE 64VWM 103VC DO-214AC



**SMAJ64A-M3/5A**  
Vishay / Semiconductor - Diodes Division  
TVS DIODE 64VWM 103VC DO-214AC

### heiße Teile

Mehr

⊗ SMAJ6.5A-TR	↔ SMAJ6.5CA	⇒ SMAJ6.5CA	D SMAJ6.5CA-13-F	⇒ SMAJ6.5CA-E3/61
⊣ SMAJ6.5CA-E3/61	⊗ SMAJ6.5CA-TR	D SMAJ6.8A	⇒ SMAJ6.8A-E3/61	⇒ SMAJ6.8CA
⊗ SMAJ6.8CA-E3/61	⊣ SMAJ60A-13-F	⊗ SMAJ60A-E3/61	↔ SMAJ60A-E3/61	⇒ SMAJ60A-R2
D SMAJ60CA	⊗ SMAJ60CA	⊣ SMAJ60CA-13-F	⊗ SMAJ60CA-E3/61	⇒ SMAJ60CA-E3/61
⇒ SMAJ60CA-TR	↔ SMAJ64A-13-F	⊗ SMAJ64A-E3/61	⊣ SMAJ64A-E3/61	⇒ SMAJ64A-E3/63
↔ SMAJ64CA	⇒ SMAJ64CA	D SMAJ64CA-13-F	⊗ SMAJ64CA-E3/61	⊣ SMAJ64CA-E3/61
⊗ SMAJ7.0A	D SMAJ7.0A	⇒ SMAJ7.0A-13-F	↔ SMAJ7.0A-E3/61	⇒ SMAJ7.0A-E3/61
⊣ SMAJ7.0CA	⊗ SMAJ7.0CA	↔ SMAJ7.0CA-13-F	⇒ SMAJ7.0CA-E3/61	⇒ SMAJ7.0CA-E3/61
⊗ SMAJ7.0CA-E3/61T	⊣ SMAJ7.5A	⊗ SMAJ7.5A	D SMAJ7.5A-13-F	⇒ SMAJ7.5A-E3/61
↔ SMAJ7.5A-E3/61	⊗ SMAJ7.5CA	⊣ SMAJ7.5CA	⊗ SMAJ7.5CA-13-F	⇒ SMAJ7.5CA-E3

Contact us: [Info@Y-IC.com](mailto:Info@Y-IC.com)

HINZUFÜGEN: Einheit A5-B5 Nr.509, 5 / F Sing Win Fabrikgebäude, 15-17 Shing Yip St, Kwun Tong, Kowloon, HongKong.

Copyright © 2019 YIC International Co., Limited