

Image may be representation.
See specs for product details.

RL3720T-R022-F

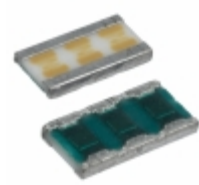
Hersteller-Teilenummer:	RL3720T-R022-F
Hersteller / Marke:	Susumu
Teil der Beschreibung:	RES SMD 0.022 OHM 1/2W 1508 WIDE
Datenblätter:	1.RL3720T-R022-F.pdf 2.RL3720T-R022-F.pdf
RoHs Status:	Bleifrei / RoHS-konform
Lagerzustand:	New original, 4200 pcs Stock Available.
Liefern von:	Hong Kong
Versandweg:	DHL/Fedex/TNT/UPS/EMS

Spezifikationen

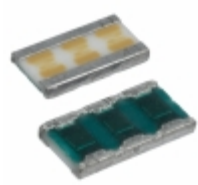
Teilenummer	RL3720T-R022-F
Hersteller	Susumu
Beschreibung	RES SMD 0.022 OHM 1/2W 1508 WIDE
Kategorie	Widerstände > Chipwiderstand - Oberflächenmontage
Teilstatus	4200 pcs Stock
Serie	RL
Betriebstemperatur	-55°C ~ 125°C
Größe / Dimension	0.079" L x 0.148" W (2.00mm x 3.75mm)
Höhe - eingesteckt (max)	0.028" (0.70mm)
Eigenschaften	Current Sense
Toleranz	±1%
Verpackung / Gehäuse	Wide 1508 (3720 Metric), 0815
Temperaturkoeffizient	0/ +350ppm/°C
Fehlerrate	-
Supplier Device-Gehäuse	0815
Leistung (W)	0.5W, 1/2W
Widerstand (Ohm)	0.022
Anzahl der Anschlüsse	2
Zusammensetzung	Thin Film
Verpackung	Tape & Reel (TR)

RL3720T-R022-F ist neu im Original, Suche RL3720T-R022-F Datenblätter, PDF, Inventar bei Y-IC.com Online, Bestellen Sie RL3720T-R022-F Susumu mit Garantie und Vertrauen.
Anfrage RL3720T-R022-F: Info@Y-IC.com

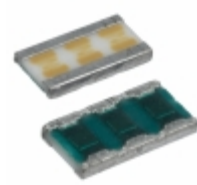
Sie können auch interessiert sein:



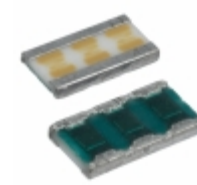
RL3720T-R033-G
Susumu
RES SMD 0.033 OHM 1/2W
1508 WIDE



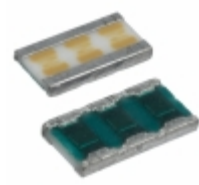
RL3720T-R033-F
Susumu
RES SMD 0.033 OHM 1/2W
1508 WIDE



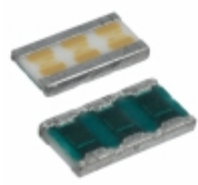
RL3720T-R018-F
Susumu
RES SMD 0.018 OHM 1/2W
1508 WIDE



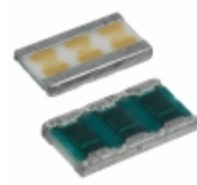
RL3720T-R025-F
Susumu
RES SMD 0.025 OHM 1/2W
1508 WIDE



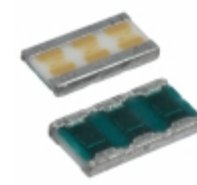
RL3720T-R018-G
Susumu
RES SMD 0.018 OHM 1/2W
1508 WIDE



RL3720T-R020-G
Susumu
RES SMD 0.02 OHM 1/2W 1508
WIDE



RL3720S-R68-G
Susumu
RES SMD 0.68 OHM 1/2W 1508
WIDE



RL3720T-R022-G
Susumu
RES SMD 0.022 OHM 1/2W
1508 WIDE

heiße Teile

Mehr

⊗ 125NQ045R	↔ AAT3522IGY-2.32-200-T1	↔ AD8309ARU	D APT13003DU-E1	↔ AT29C256-25JC
⊣ BL1608-10K2500T/LF	⊗ BL9195-33BPSRT	D BSM300GA123DN2	↔ BZX84C27TA	↔ CHL8104-00.
⊗ CS452GTVA5	⊣ FDS4470-NL	⊗ FQP50N06L	↔ IRKV56/12A	↔ IXGH30N120C3H1
D LF305-S/SP11	⊗ LT4351IMS#PBF	⊣ MA111-TX	⊗ MIC8115TUY-TR	↔ NLC322522T-100K-S
↔ P6SMB22A	↔ PT480232TG-7G	⊗ RL3264-6-R005-F	⊣ RL3264L4-R003-F	↔ RL3720S-R10-F-C
↔ RL3720T-R047-F	↔ RL3720TT-R010-FN	D RL3720WS-R10-F-C	⊗ RL3720WS-R47-F	⊣ RL3720WT-R010-FN
⊗ RL3720WT-R010-FNH	D RL3720WT-R010-G	↔ RL3720WT-R010-GN	↔ RL3720WT-R015-F	↔ RL3720WT-R015-FN
⊣ RL3720WT-R020-F	⊗ RL3720WT-R020-FNH	↔ RL3720WT-R033-F-0.033R	↔ RL3720WT-R050-FN	↔ S-1170B33PD-OTSTFS
⊗ SKIIP39AC126V2	⊣ SRP1040-R82M	⊗ SRR4018-100Y	D TPS757151KTT	↔ TSA7887BRZ-REEL
↔ V24B28C150BG	⊗ V300B12C250AL	⊣ VI-810487	⊗ VI-882641	↔ VI-J1Y-CY

Contact us: Info@Y-IC.com

HINZUFÜGEN: Einheit A5-B5 Nr.509, 5 / F Sing Win Fabrikgebäude, 15-17 Shing Yip St, Kwun Tong, Kowloon, HongKong.

Copyright © 2019 YIC International Co., Limited