



BYG10D-TR

Hersteller-Teilenummer: BYG10D-TR

Hersteller / Marke: VISHAY

Teil der Beschreibung: BYG10D-TR VISHAY

RoHs Status:

Lagerzustand: New original, 9695 pcs Stock Available.

Liefern von: Hong Kong

Versandweg: DHL/Fedex/TNT/UPS/EMS

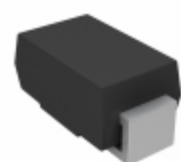
Image may be representation.
See specs for product details.

Spezifikationen

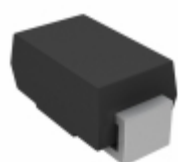
Teilenummer	BYG10D-TR
Hersteller	VISHAY
Beschreibung	BYG10D-TR VISHAY
Kategorie	Integrierte Schaltungen (ICs) > Specialized Hot ICs
Teilstatus	9695 pcs Stock
Serie	-
RoHs Status	Lead free / RoHS Compliant
Bedingung	New Original Stock
Garantie	100% Perfect Functions
Vorlaufzeit	2-3days after payment.
Zahlung	PayPal / Telegraphic Transfer / Western Union
Versand per	DHL / Fedex / UPS
Hafen	HongKong
Anfrage-E-Mail	Info@Y-IC.com

BYG10D-TR ist neu im Original, Suche BYG10D-TR Datenblätter, PDF, Inventar bei Y-IC.com Online, Bestellen Sie BYG10D-TR mit Garantie und Vertrauen. Anfrage BYG10D-TR: Info@Y-IC.com

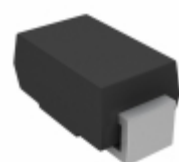
Sie können auch interessiert sein:



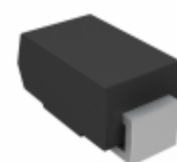
BYG10DHE3/TR
Vishay / Semiconductor - Opto Division
DIODE AVALANCHE 200V 1.5A



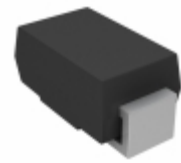
BYG10D-E3/TR3
Vishay / Semiconductor - Diodes Division
DIODE AVALANCHE 200V 1.5A



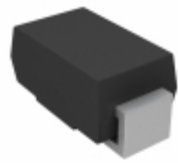
BYG10D-M3/TR
Electro-Films (EFI) / Vishay
DIODE AVALANCHE 200V 1.5A



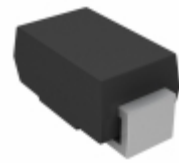
BYG10D-M3/TR3
Electro-Films (EFI) / Vishay
DIODE AVALANCHE 200V 1.5A



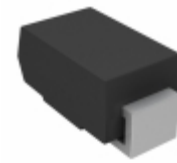
BYG10D-M3/TR3
Vishay / Semiconductor - Diodes Division
DIODE AVALANCHE 200V 1.5A



BYG10D-M3/TR
Vishay / Semiconductor - Diodes Division
DIODE AVALANCHE 200V 1.5A



BYG10DHE3/TR
Vishay / Semiconductor - Diodes Division
DIODE AVALANCHE 200V 1.5A



BYG10DHE3/TR3
Vishay / Semiconductor - Diodes Division
DIODE AVALANCHE 200V 1.5A

heiße Teile

Mehr

- ⚙ BYG10D-E3/TR
- ⚙ BYG10G-E3/TR
- ⚙ BYG10GHE3/TR
- ⚙ BYG10J-E3/TR
- ➔ BYG10J-TR
- ➔ BYG10K-TR
- ⚙ BYG10M-M3/TR
- ⚙ BYG10Y-M3/TR
- ⚙ BYG20D-E3/TR3
- ➔ BYG20G-E3/TR3
- ➔ BYG10D-E3/TR
- ⚙ BYG10G-E3/TR
- ⚙ BYG10GHE3/TR
- ⚙ BYG10J-E3/TR3
- ➔ BYG10K-E3/TR
- ➔ BYG10M-E3-TR
- ⚙ BYG10M-TR
- ⚙ BYG10Y-M3/TR
- ⚙ BYG20D-TR
- ⚙ BYG20G-GS08
- ➔ BYG10D-M3/TR
- ⚙ BYG10G-M3/TR
- ⚙ BYG10GHE3/TR3
- ⚙ BYG10J-E3/TR3
- ⚙ BYG10K-E3/TR
- ⚙ BYG10M-E3/TR
- ➔ BYG10M-TR3
- ➔ BYG20D-E3/TR
- ⚙ BYG20G-E3/TR
- ⚙ BYG20G-TR
- ⚙ BYG10D-M3/TR
- ➔ BYG10G-M3/TR
- ➔ BYG10GHE3/TR3
- ⚙ BYG10J-M3/TR
- ⚙ BYG10K-M3/TR
- ⚙ BYG10M-E3/TR
- ➔ BYG10Y-E3/TR
- ➔ BYG20D-E3/TR
- ⚙ BYG20G-E3/TR
- ⚙ BYG20G-TR3
- ➔ BYG10G-E3
- ➔ BYG10G-TR
- ➔ BYG10J-E3/TR
- ➔ BYG10J-M3/TR
- ➔ BYG10K-M3/TR
- ⚙ BYG10M-M3/TR
- ➔ BYG10Y-E3/TR
- ➔ BYG20D-E3/TR3
- ➔ BYG20G-E3/TR3
- ➔ BYG20GHE3/TR

Contact us: Info@Y-IC.com

HINZUFÜGEN: Einheit A5-B5 Nr.509, 5 / F Sing Win Fabrikgebäude, 15-17 Shing Yip St, Kwun Tong, Kowloon, HongKong.
Copyright © 2019 YIC International Co., Limited