

TAIYO YUDEN

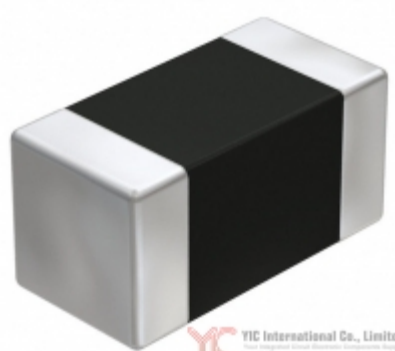


Image may be representation.
See specs for product details.

EMK042CG3R9CC-F








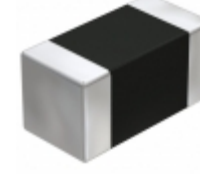
Hersteller-Teilenummer:	EMK042CG3R9CC-F
Hersteller / Marke:	Taiyo Yuden
Teil der Beschreibung:	CAP CER 3.9PF 16V NP0 01005
Datenblätter:	1.EMK042CG3R9CC-F.pdf 2.EMK042CG3R9CC-F.pdf
RoHs Status:	Bleifrei / RoHS-konform
Lagerzustand:	New original, Stock Available.
Liefern von:	Hong Kong
Versandweg:	DHL/Fedex/TNT/UPS/EMS

Spezifikationen

Teilenummer	EMK042CG3R9CC-F
Hersteller	Taiyo Yuden
Beschreibung	CAP CER 3.9PF 16V NP0 01005
Kategorie	Kondensatoren > Keramikkondensatoren
Teilstatus	Require For Quote & Check Stock
Serie	M
Spannung - Nennwert	16V
Betriebstemperatur	-55°C ~ 125°C
Bewertungen	-
Befestigungsart	Surface Mount, MLCC
Größe / Dimension	0.016" L x 0.008" W (0.40mm x 0.20mm)
Höhe - eingesteckt (max)	-
Eigenschaften	-
Kapazität	3.9pF
Toleranz	±0.25pF
Anwendungen	General Purpose
Leiter-Abstand	-
Verpackung / Gehäuse	01005 (0402 Metric)
Temperaturkoeffizient	C0G, NP0
Dicke (max)	0.009" (0.22mm)
Leitungsstil	-
Verpackung	Tape & Reel (TR)

EMK042CG3R9CC-F ist neu im Original, Suche EMK042CG3R9CC-F Datenblätter, PDF, Inventar bei Y-IC.com Online, Bestellen Sie EMK042CG3R9CC-F Taiyo Yuden mit Garantie und Vertrauen. Anfrage EMK042CG3R9CC-F: Info@Y-IC.com

Sie können auch interessiert sein:

 EMK042CG430JC-W Taiyo Yuden CAP CER 43PF 16V C0G 01005	 EMK042CG470JC-F Taiyo Yuden CAP CER 47PF 16V NP0 01005	 EMK042CG3R3CC-F Taiyo Yuden CAP CER 3.3PF 16V NP0 01005	 EMK042CG390JC-FW Taiyo Yuden CAP CER 39PF 16V NP0 01005
 EMK042CG390JC-W Taiyo Yuden CAP CER 39PF 16V C0G 01005	 EMK042CG470JC-FW Taiyo Yuden CAP CER 47PF 16V NP0 01005	 EMK042CG3R3CC-FW Taiyo Yuden CAP CER 3.3PF 16V NP0 01005	 EMK042CG3R9CD-W Taiyo Yuden CAP CER 3.9PF 16V NP0 01005

heiße Teile

Mehr

⊕ EMK042CG200JC-W	↔ EMK042CG220JC-F	⇒ EMK042CG220JC-FW	D EMK042CG220JC-W	⇒ EMK042CG240JC-W
⊖ EMK042CG270JC-F	⊕ EMK042CG270JC-FW	D EMK042CG270JC-W	⇒ EMK042CG2R2CC-F	⇒ EMK042CG2R2CC-FW
⊕ EMK042CG2R2CD-W	⊖ EMK042CG2R7CC-F	⊕ EMK042CG2R7CC-FW	↔ EMK042CG2R7CD-W	⇒ EMK042CG300JC-W
D EMK042CG330JC-F	⊕ EMK042CG330JC-FW	⊖ EMK042CG330JC-W	⊕ EMK042CG360JC-W	⇒ EMK042CG390JC-F
⇒ EMK042CG390JC-FW	↔ EMK042CG390JC-W	⊕ EMK042CG3R3CC-F	⊖ EMK042CG3R3CC-FW	⇒ EMK042CG3R3CD-W
↔ EMK042CG3R9CC-FW	⇒ EMK042CG3R9CD-W	D EMK042CG430JC-W	⊕ EMK042CG470JC-F	⊖ EMK042CG470JC-FW
⊕ EMK042CG470JC-W	D EMK042CG4R7BC-FW	⇒ EMK042CG4R7CC-F	↔ EMK042CG4R7CC-FW	⇒ EMK042CG4R7CD-W
⊖ EMK042CG510JC-W	⊕ EMK042CG560JC-F	↔ EMK042CG560JC-FW	⇒ EMK042CG560JC-W	⇒ EMK042CG5R6DC-F
⊕ EMK042CG5R6DC-FW	⊖ EMK042CG5R6DD-W	⊕ EMK042CG620JC-W	D EMK042CG680JC-F	⇒ EMK042CG680JC-FW
↔ EMK042CG680JC-W	⊕ EMK042CG6R8DC-F	⊖ EMK042CG6R8DC-FW	⊕ EMK042CG6R8DD-W	⇒ EMK042CG750JC-W

Contact us: Info@Y-IC.com

HINZUFÜGEN: Einheit A5-B5 Nr.509, 5 / F Sing Win Fabrikgebäude, 15-17 Shing Yip St, Kwun Tong, Kowloon, HongKong.

Copyright © 2019 YIC International Co., Limited