



SMA5J16CA

Hersteller-Teilenummer:	SMA5J16CA
Hersteller / Marke:	SUNMATE
Teil der Beschreibung:	SMA5J16CA SUNMATE
RoHs Status:	
Lagerzustand:	New original, 18000 pcs Stock Available.
Liefern von:	Hong Kong
Versandweg:	DHL/Fedex/TNT/UPS/EMS

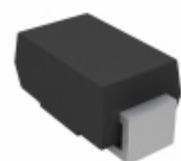
Image may be representation.
See specs for product details.

Spezifikationen

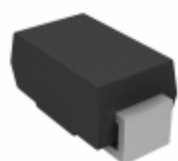
Teilenummer	SMA5J16CA
Hersteller	SUNMATE
Beschreibung	SMA5J16CA SUNMATE
Kategorie	Integrierte Schaltungen (ICs) > Specialized Hot ICs
Teilstatus	18000 pcs Stock
Serie	SMA(DO-214AC)
RoHs Status	Lead free / RoHS Compliant
Bedingung	New Original Stock
Garantie	100% Perfect Functions
Vorlaufzeit	2-3days after payment.
Zahlung	PayPal / Telegraphic Transfer / Western Union
Versand per	DHL / Fedex / UPS
Hafen	HongKong
Anfrage-E-Mail	Info@Y-IC.com

SMA5J16CA ist neu im Original, Suche SMA5J16CA Datenblätter, PDF, Inventar bei Y-IC.com Online, Bestellen Sie SMA5J16CA mit Garantie und Vertrauen. Anfrage SMA5J16CA: Info@Y-IC.com

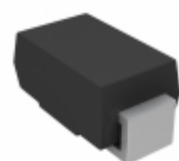
Sie können auch interessiert sein:



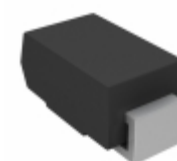
SMA5J16CA-E3/5A
Electro-Films (EFI) / Vishay
TVS DIODE 16V 26V DO214AC



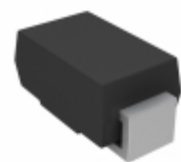
SMA5J16CAHE3/5A
Electro-Films (EFI) / Vishay
TVS DIODE 16V 26V DO214AC



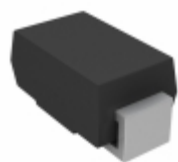
SMA5J16C-E3/61
Vishay / Semiconductor - Diodes
Division
TVS DIODE 16VWM 28.8VC
SMA



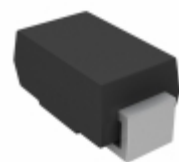
SMA5J16C-E3/61
Electro-Films (EFI) / Vishay
TVS DIODE 16V 28.8V
DO214AC



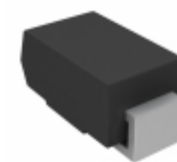
SMA5J16CA-E3/61
Electro-Films (EFI) / Vishay
TVS DIODE 16V 26V DO214AC



SMA5J16CA-E3/61
Vishay / Semiconductor - Diodes
Division
TVS DIODE 16VWM 26VC SMA



SMA5J16C-E3/5A
Electro-Films (EFI) / Vishay
TVS DIODE 16V 28.8V
DO214AC



SMA5J16C-E3/5A
Vishay / Semiconductor - Diodes
Division
TVS DIODE 16VWM 28.8VC
SMA

heiße Teile

Mehr

⊗ SMA-E1017	↔ SMA-Z1001	⇒ SMA020E015C	D SMA020E025C	⇒ SMA050-04D12
⊣ SMA050-04D15	⊗ SMA2417M-LF1054	D SMA2417M-LF1062	⇒ SMA3101-TL-E	⇒ SMA3103-TL-E
⊗ SMA400-04D15	⊣ SMA4201-SFV-TR-E	⊗ SMA4201-TR-E	↔ SMA4205-TR	⇒ SMA4205-TR-E
D SMA5J10A	⊗ SMA5J12CA	⊣ SMA5J13A	⊗ SMA5J14CA-E3/61	⇒ SMA5J14CA-E3/61
⇒ SMA5J15A	↔ SMA5J18A	⊗ SMA5J20CA	⊣ SMA5J22A	⇒ SMA5J24CA
↔ SMA5J26CA	⇒ SMA5J28A-E3/61T	D SMA5J28CA-E3/61	⊗ SMA5J28CA-E3/61	⊣ SMA5J30CA-E3/61
⊗ SMA5J30CA-E3/61	D SMA5J33A	⇒ SMA5J33CA	↔ SMA5J36CA	⇒ SMA5J40A-E3/61
⊣ SMA5J40A-E3/61	⊗ SMA5J6.0A-E3/61	↔ SMA5J6.0A-E3/61	⇒ SMA5J6.0CA	⇒ SMA5J6.5AHE3/61
⊗ SMA5J6.5AHE3/61	⊣ SMA5J6.5CA	⊗ SMA5J6.5CHE3/61	D SMA5J6.5CHE3/61	⇒ SMA5J7.0A
↔ SMA5J7.0HE3/61	⊗ SMA5J7.0HE3/61	⊣ SMA5J7.5CAHE3/61	⊗ SMA5J7.5CAHE3/61	⇒ SMA5J8.5A

Contact us: Info@Y-IC.com

HINZUFÜGEN: Einheit A5-B5 Nr.509, 5 / F Sing Win Fabrikgebäude, 15-17 Shing Yip St, Kwun Tong, Kowloon, HongKong.

Copyright © 2019 YIC International Co., Limited