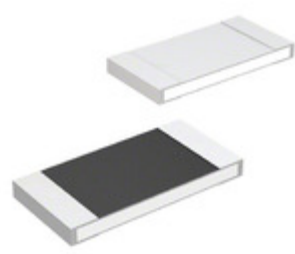




LAPIS Semiconductor



YIC International Co., Limited.

Image may be representation.
See specs for product details.

MCR100JZHJ330

Hersteller-Teilenummer:	MCR100JZHJ330
Hersteller / Marke:	LAPIS Semiconductor
Teil der Beschreibung:	RES SMD 33 OHM 5% 1W 2512
Datenblätter:	MCR100JZHJ330.pdf
RoHs Status:	Bleifrei / RoHS-konform
Lagerzustand:	New original, 4000 pcs Stock Available.
Liefern von:	Hong Kong
Versandweg:	DHL/Fedex/TNT/UPS/EMS

Spezifikationen

Teilenummer	MCR100JZHJ330
Hersteller	LAPIS Semiconductor
Beschreibung	RES SMD 33 OHM 5% 1W 2512
Kategorie	Widerstände > Chipwiderstand - Oberflächenmontage
Teilstatus	4000 pcs Stock
Serie	MCR
Betriebstemperatur	-55°C ~ 125°C
Größe / Dimension	0.248" L x 0.126" W (6.30mm x 3.20mm)
Höhe - eingesteckt (max)	0.028" (0.70mm)
Eigenschaften	Automotive AEC-Q200
Toleranz	±5%
Verpackung / Gehäuse	2512 (6432 Metric)
Temperaturkoeffizient	±200ppm/°C
Fehlerrate	-
Supplier Device-Gehäuse	2512
Leistung (W)	1W
Widerstand (Ohm)	33
Anzahl der Anschlüsse	2
Zusammensetzung	Thick Film
Verpackung	Original-Reel®

MCR100JZHJ330 ist neu im Original, Suche MCR100JZHJ330 Datenblätter, PDF, Inventar bei Y-IC.com Online, Bestellen Sie MCR100JZHJ330 LAPIS Semiconductor mit Garantie und Vertrauen. Anfrage MCR100JZHJ330: Info@Y-IC.com

Sie können auch interessiert sein:

<p>MCR100JZHJ301 LAPIS Semiconductor RES SMD 300 OHM 5% 1W 2512</p>	<p>MCR100JZHJ333 LAPIS Semiconductor RES SMD 33K OHM 5% 1W 2512</p>	<p>MCR100JZHJ360 LAPIS Semiconductor RES SMD 36 OHM 5% 1W 2512</p>	<p>MCR100JZHJ2R7 LAPIS Semiconductor RES SMD 2.7 OHM 5% 1W 2512</p>
<p>MCR100JZHJ332 LAPIS Semiconductor RES SMD 3.3K OHM 5% 1W 2512</p>	<p>MCR100JZHJ331 LAPIS Semiconductor RES SMD 330 OHM 5% 1W 2512</p>	<p>MCR100JZHJ303 LAPIS Semiconductor RES SMD 30K OHM 5% 1W 2512</p>	<p>MCR100JZHJ302 LAPIS Semiconductor RES SMD 3K OHM 5% 1W 2512</p>

heiße Teile

Mehr

MCR100-6G/SOT89-23	MCR100-6M	MCR100-6R	MCR100-6RLRAG	MCR100-6S
MCR100-7G	MCR100-8	MCR100-8G	MCR100-8G/SOT89-23	MCR100EZHF025
MCR100G-6-AD-AE3-R	MCR100G-6-B-AE3-R	MCR100JZHFLR200	MCR100JZHJ000	MCR100JZHJ102
MCR100JZHJ103	MCR100JZHJ121	MCR100JZHJ182	MCR100JZHJ1R0	MCR100JZHJ220
MCR100JZHJ223	MCR100JZHJ260	MCR100JZHJ271	MCR100JZHJ2R2	MCR100JZHJ2R7
MCR100JZHJ332	MCR100JZHJ390	MCR100JZHJ3R0	MCR100JZHJ470	MCR100JZHJ4R3
MCR100JZHJ4R7	MCR100JZHJ561	MCR100JZHJ680	MCR100JZHJ6R2	MCR100JZHJ751
MCR100JZHJ820	MCR100JZHJ821	MCR100JZHJ9R1	MCR100JZHJLR22	MCR100JZHJLR22
MCR100JZHJLR47	MCR100JZHJLR47	MCR100JZHJLR56	MCR100L-6	MCR100L-6
MCR100L-6A-HF	MCR100L-6B	MCR100L-8-AB3-R	MCR106-006	MCR106-8

Contact us: Info@Y-IC.com

HINZUFÜGEN: Einheit A5-B5 Nr.509, 5 / F Sing Win Fabrikgebäude, 15-17 Shing Yip St, Kwun Tong, Kowloon, HongKong.

Copyright © 2019 YIC International Co., Limited