

Panasonic

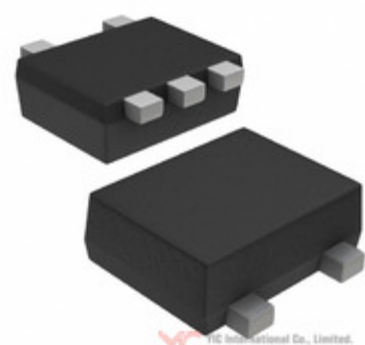


Image may be representation.
See specs for product details.

DMA961040R



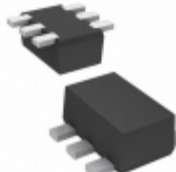



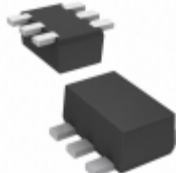
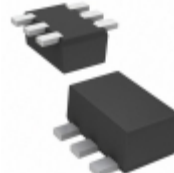
Hersteller-Teilenummer:	DMA961040R
Hersteller / Marke:	Panasonic
Teil der Beschreibung:	TRANS PREBIAS DUAL PNP SSMINI5
RoHs Status:	Bleifrei / RoHS-konform
Lagerzustand:	New original, 1160 pcs Stock Available.
Liefern von:	Hong Kong
Versandweg:	DHL/Fedex/TNT/UPS/EMS

Spezifikationen

Teilenummer	DMA961040R
Hersteller	Panasonic
Beschreibung	TRANS PREBIAS DUAL PNP SSMINI5
Kategorie	Diskrete Halbleiterprodukte > Transistoren-bipolare
Teilstatus	1160 pcs Stock
Serie	-
Befestigungsart	Surface Mount
Leistung - max	125mW
Verpackung / Gehäuse	SOT-665
Supplier Device-Gehäuse	SSMini5-F4-B
Transistor-Typ	2 PNP - Pre-Biased (Dual)
Strom - Kollektor (Ic) (max)	100mA
Spannung - Kollektor-Emitter-Durchbruch (max)	50V
VCE Sättigung (Max) @ Ib, Ic	250mV @ 500µA, 10mA
Strom - Collector Cutoff (Max)	500nA
DC Stromgewinn (HFE) (Min) @ Ic, VCE	80 @ 5mA, 10V
Frequenz - Übergang	-
Widerstand - Base (R1) (Ohm)	10k
Widerstand - Emitter-Basis (R2) (Ohm)	47k
Verpackung	Tape & Reel (TR)

DMA961040R ist neu im Original, Suche DMA961040R Datenblätter, PDF, Inventar bei Y-IC.com Online, Bestellen Sie DMA961040R Panasonic mit Garantie und Vertrauen. Anfrage DMA961040R: Info@Y-IC.com

Sie können auch interessiert sein:

 <p>DMA90U1800LB-TRR IXYS Corporation DIODE RECTIFER TRIPLE 1800V SMPD</p>	 <p>DMA964020L Panasoni DMA964020L Panasoni</p>	 <p>DMA964020R Panasonic TRANS PREBIAS DUAL PNP SSMINI6</p>	 <p>DMA9610F0R Panasonic TRANS PREBIAS DUAL PNP SSMINI5</p>
 <p>DMA90U1800LB IXYS Corporation DIODE RECTIFER TRIPLE 1800V SMPD</p>	 <p>DMA961010R Panasonic TRANS PREBIAS DUAL PNP SSMINI5</p>	 <p>DMA964010R Panasonic TRANS PREBIAS DUAL PNP SSMINI6</p>	 <p>DMA964030R Panasonic TRANS PREBIAS DUAL PNP SSMINI6</p>

heiße Teile

Mehr

06031C102MAT2A	08051A620FAT4A	08055A272JAQ2A	ADM1490EBRZ	AP7341-11FS4-7R
AS1117M3-2.5	BZG03C110TR	D CGB4B3X5R1C225K055AB	CTX99-17978-R	CY505YC56CS
DFLZ13-7	DMA201010R	DMA204010R	DMA204030R	DMA264010R
DMA506010R	DMA561040R	DMA564030R	DMA904010L	DMA904010R
DMA961010R	DMA964010R	DMA964020L	DMA964020R	DMA964060R
DMA9640MOR	DMA9640T0R	D ICS501AM	IPP139N08N3	ISL84780IV-T
IXFH76N07-12	D L99H01QF	LTC1771EMS8#TRPBF	LTC2903IS6-D1	LTC4360ISC8-1#TRPBF
MAX1781ETM+T	MBB100BS6	MBRM110LT1G	MMBT3906R-R	NHP220SFT1G
P4SMAJ45A	PCA9540BGD	SAFEA1G88FLOF00R12	SI4835BDY-T1-E3.	SKM300GB123DN2
SS13HE3/61T	TMK107BJ154MA-T	XC2S100E-6PQ208C	ZXTN25020BFHTA	ZXTP4003GTA

Contact us: Info@Y-IC.com

HINZUFÜGEN: Einheit A5-B5 Nr.509, 5 / F Sing Win Fabrikgebäude, 15-17 Shing Yip St, Kwun Tong, Kowloon, HongKong.

Copyright © 2019 YIC International Co., Limited