

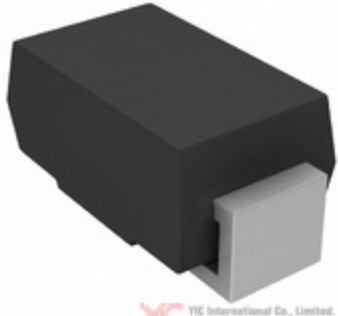


| | |
|---|---|
|  | <h2>RS1KHE3_A/H</h2> |
| | <p>Hersteller-Teilenummer: RS1KHE3_A/H</p> <hr/> <p>Hersteller / Marke: Vishay / Semiconductor - Diodes Division</p> <hr/> <p>Teil der Beschreibung: DIODE FAST REC 800V 1A DO214AC</p> <hr/> <p>Datenblätter:  RS1KHE3_A/H.pdf</p> <hr/> <p>RoHs Status: Bleifrei / RoHS-konform</p> <hr/> <p>Lagerzustand: New original, Stock Available.</p> <hr/> <p>Liefern von: Hong Kong</p> <hr/> <p>Versandweg: DHL/Fedex/TNT/UPS/EMS</p> |
|  | |
| <p>Image may be representation. See specs for product details.</p> | |

Spezifikationen

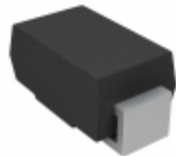
| | |
|------------------------------------|--|
| Teilenummer | RS1KHE3_A/H |
| Hersteller | Vishay / Semiconductor - Diodes Division |
| Beschreibung | DIODE FAST REC 800V 1A DO214AC |
| Kategorie | Diskrete Halbleiterprodukte > Dioden-Gleichrichter- |
| Teilstatus | Require For Quote & Check Stock |
| Spannung - Forward (Vf) (Max) @ If | 1.3V @ 1A |
| Spannung - Sperr (Vr) (max) | 800V |
| Supplier Device-Gehäuse | DO-214AC (SMA) |
| Geschwindigkeit | Fast Recovery = 200mA (Io) |
| Serie | Automotive, AEC-Q101 |
| Rückwärts-Erholzeit (Trr) | 500ns |
| Verpackung | Tape & Reel (TR) |
| Verpackung / Gehäuse | DO-214AC, SMA |
| Betriebstemperatur - Anschluss | -55°C ~ 150°C |
| Befestigungsart | Surface Mount |
| Diodentyp | Standard |
| Strom - Sperrleckstrom @ Vr | 5µA @ 800V |
| Strom - Richt (Io) | 1A |
| Kapazität @ Vr, F | 7pF @ 4V, 1MHz |

RS1KHE3_A/H Electronic Components ist ein 100% neues Original von YIC Distributor, RS1KHE3_A/H-Datenblätter durchsuchen, PDF, Inventar bei Y-IC.com Online, RS1KHE3_A/H Vishay / Semiconductor - Diodes Division mit Garantie und Vertrauen bestellen. Versand per DHL / FedEx / TNT / UPS Express. Unterstützung der Zahlung mit telegrafischer Überweisung (T / T) oder PayPal.

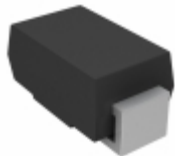
RFQ RS1KHE3_A/H E-Mail: Info@Y-IC.com

Sie können auch interessiert

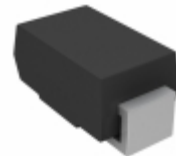
sein:



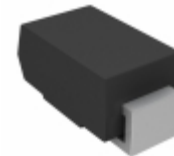
RS1KHE3/61T
Electro-Films (EFI) / Vishay
DIODE GEN PURP 800V 1A
DO214AC



RS1KHE3/5AT
Vishay Semiconductor Diodes
Division
DIODE GEN PURP 800V 1A
DO214AC



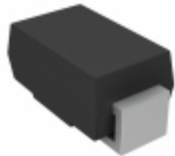
RS1KHE3/61T
Vishay Semiconductor Diodes
Division
DIODE GEN PURP 800V 1A
DO214AC



RS1KHE3_A/I
Electro-Films (EFI) / Vishay
DIODE GEN PURP 800V 1A
DO214AC



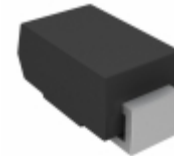
RS1KF5HMXG
TSC (Taiwan Semiconductor)
DIODE, FAST, 1A, 800V



RS1KHE3/5AT
Electro-Films (EFI) / Vishay
DIODE GEN PURP 800V 1A
DO214AC



RS1KHM2G
TSC (Taiwan Semiconductor)
DIODE GEN PURP 800V 1A
DO214AC



RS1KHE3_A/H
Electro-Films (EFI) / Vishay
DIODE GEN PURP 800V 1A
DO214AC

Verwandtes Hot-Keyword

Mehr

| | | | | |
|--|---|--|-----------------------------------|--|
| RS1KHE3_A/H Vishay / Semiconductor - Diodes Division | RS1KHE3_A/H Datenblatt | RS1KHE3_A/H-Datenblätter | RS1KHE3_A/H PDF | Vishay / Semiconductor - Diodes Division RS1KHE3_A/H |
| RS1KHE3_A/H Electronic | RS1KHE3_A/H-Komponenten | RS1KHE3_A/H-Verteiler | RS1KHE3_A/H-Bild | RS1KHE3_A/H-Teil |
| RS1KHE3_A/H Preis | RS1KHE3_A/H Hersteller | RS1KHE3_A/H Bild | RS1KHE3_A/H Aktie | RS1KHE3_A/H Inventar |
| RS1KHE3_A/H Neu | RS1KHE3_A/H Original | RS1KHE3_A/H garantiert | RS1KHE3_A/H RFQ | RS1KHE3_A/H Online bestellen |

Contact us: Info@Y-IC.com

HINZUFÜGEN: Einheit A5-B5 Nr.509, 5 / F Sing Win Fabrikgebäude, 15-17 Shing Yip St, Kwun Tong, Kowloon, HongKong.

Copyright © 2019 YIC International Co., Limited