



## SI1033X-T1

<b>Hersteller-Teilenummer:</b>	SI1033X-T1
<b>Hersteller / Marke:</b>	SILICON
<b>Teil der Beschreibung:</b>	SI1033X-T1 SILICON
<b>RoHs Status:</b>	
<b>Lagerzustand:</b>	New original, 27092 pcs Stock Available.
<b>Lieferr von:</b>	Hong Kong
<b>Versandweg:</b>	DHL/Fedex/TNT/UPS/EMS

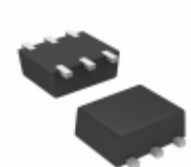
Image may be representation.  
See specs for product details.

### Spezifikationen

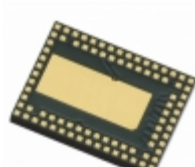
Teilenummer	SI1033X-T1
Hersteller	SILICON
Beschreibung	SI1033X-T1 SILICON
Kategorie	<a href="#">Integrierte Schaltungen (ICs) &gt; Specialized Hot ICs</a>
Teilstatus	27092 pcs Stock
Serie	-
RoHs Status	Lead free / RoHS Compliant
Bedingung	New Original Stock
Garantie	100% Perfect Functions
Vorlaufzeit	2-3days after payment.
Zahlung	PayPal / Telegraphic Transfer / Western Union
Versand per	DHL / Fedex / UPS
Hafen	HongKong
Anfrage-E-Mail	Info@Y-IC.com

SI1033X-T1 ist neu im Original, Suche SI1033X-T1 Datenblätter, PDF, Inventar bei Y-IC.com Online, Bestellen Sie SI1033X-T1 mit Garantie und Vertrauen. Anfrage SI1033X-T1: Info@Y-IC.com

Sie können auch interessiert sein:



**SI1033X-T1-GE3**  
Vishay / Siliconix  
MOSFET 2P-CH 20V 0.145A  
SC89



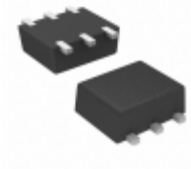
**SI1033-B-GM3**  
Energy Micro (Silicon Labs)  
IC RF TXRX+MCU ISM<1GHZ  
85-VFLGA



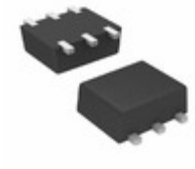
**SI1034-A-GM**  
Energy Micro (Silicon Labs)  
IC RF TXRX+MCU ISM<1GHZ  
85-VFLGA



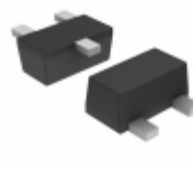
**SI1033-A-GM**  
Energy Micro (Silicon Labs)  
IC RF TXRX+MCU ISM<1GHZ  
85-VFLGA



**SI1033X-T1-E3**  
Vishay / Siliconix  
MOSFET 2P-CH 20V 0.145A  
SOT563F



**SI1033X-T1-GE3**  
Electro-Films (EFI) / Vishay  
MOSFET 2P-CH 20V 0.145A  
SC89



**SI1032X-T1-GE3**  
Vishay / Siliconix  
MOSFET N-CH 20V 200MA  
SC89-3



**SI1033-A-GMR**  
Energy Micro (Silicon Labs)  
IC RF TXRX+MCU ISM<1GHZ  
85-VFLGA

### heiße Teile

Mehr

⚙ SI1026X-T1-GE3	↔ SI1028X-T1-GE3	↔ SI1028X-T1-GE3	D SI1029X-T1-GE3	↔ SI1029X-T1-GE3
⊣ SI1031R-T1	⚙ SI1031R-T1-E3	D SI1031R-T1-E3	↔ SI1031R-T1-GE3	↔ SI1031R-T1-GE3
⚙ SI1031X-T1	⊣ SI1031X-T1-E3	⚙ SI1031X-T1-E3	↔ SI1031X-T1-GE3	↔ SI1031X-T1-GE3
D SI1032R-T1	⚙ SI1032R-T1-E3	⊣ SI1032R-T1-E3	⚙ SI1032R-T1-GE3	↔ SI1032R-T1-GE3
↔ SI1032X-T1	↔ SI1032X-T1-E3	⚙ SI1032X-T1-E3	⊣ SI1032X-T1-GE3	↔ SI1032X-T1-GE3
↔ SI1033X-T1-E3	↔ SI1033X-T1-E3	D SI1034CX-T1-GE3	⚙ SI1034CX-T1-GE3	⊣ SI1034X-T1
⚙ SI1034X-T1-E3	D SI1034X-T1-E3	↔ SI1034X-T1-GE3	↔ SI1034X-T1-GE3	↔ SI1035X-T1
⊣ SI1035X-T1-E3	⚙ SI1035X-T1-E3	↔ SI1035X-T1-GE3	↔ SI1035X-T1-GE3	↔ SI1039X-T1-E3
⚙ SI1039X-T1-E3	⊣ SI1040X-T1-E3	⚙ SI1040X-T1-E3	D SI1040X-T1-GE3	↔ SI1040X-T1-GE3
↔ SI1041ADY	⚙ SI1041DY-T1	⊣ SI1041DY-T1-E3	⚙ SI1045AB	↔ SI1045ADY-T1

Contact us: [Info@Y-IC.com](mailto:Info@Y-IC.com)

HINZUFÜGEN: Einheit A5-B5 Nr.509, 5 / F Sing Win Fabrikgebäude, 15-17 Shing Yip St, Kwun Tong, Kowloon, HongKong.  
Copyright © 2019 YIC International Co., Limited