




|  |   |
|--|---|
|   | <h2 style="color: red;">ESH1D-M3/61T</h2>   |
|  <p>Image may be representation.<br/>See specs for product details.</p> | <b>Hersteller-Teilenummer:</b> ESH1D-M3/61T   |
|  | <b>Hersteller / Marke:</b> Vishay / Semiconductor - Diodes Division   |
|  | <b>Teil der Beschreibung:</b> DIODE GEN PURP 200V 1A DO214AC  |
|  | <b>Datenblätter:</b>  <a href="#">ESH1D-M3/61T.pdf</a> |
|  | <b>RoHs Status:</b> Bleifrei / RoHS-konform   |
|  | <b>Lagerzustand:</b> New original, Stock Available.   |
|  | <b>Liefern von:</b> Hong Kong   |
| <b>Versandweg:</b> DHL/Fedex/TNT/UPS/EMS   |   |

### Spezifikationen

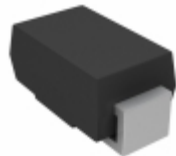
|                                    |   |
|------------------------------------|---|
| Teilenummer                        | ESH1D-M3/61T  |
| Hersteller                         | Vishay / Semiconductor - Diodes Division            |
| Beschreibung                       | DIODE GEN PURP 200V 1A DO214AC                      |
| Kategorie                          | Diskrete Halbleiterprodukte > Dioden-Gleichrichter- |
| Teilstatus                         | Require For Quote & Check Stock                     |
| Spannung - Forward (Vf) (Max) @ If | 900mV @ 1A  |
| Spannung - Sperr (Vr) (max)        | 200V  |
| Supplier Device-Gehäuse            | DO-214AC (SMA)                                      |
| Geschwindigkeit                    | Fast Recovery = 200mA (Io)                          |
| Serie                              | -   |
| Rückwärts-Erholzeit (Trr)          | 25ns  |
| Verpackung                         | Tape & Reel (TR)                                    |
| Verpackung / Gehäuse               | DO-214AC, SMA                                       |
| Betriebstemperatur - Anschluss     | -55°C ~ 175°C                                       |
| Befestigungsart                    | Surface Mount                                       |
| Diodentyp                          | Standard  |
| Strom - Sperrleckstrom @ Vr        | 1µA @ 200V  |
| Strom - Richt (Io)                 | 1A  |
| Kapazität @ Vr, F                  | 25pF @ 4V, 1MHz                                     |

ESH1D-M3/61T Electronic Components ist ein 100% neues Original von YIC Distributor, ESH1D-M3/61T-Datenblätter durchsuchen, PDF, Inventar bei Y-IC.com Online, ESH1D-M3/61T Vishay / Semiconductor - Diodes Division mit Garantie und Vertrauen bestellen. Versand per DHL / FedEx / TNT / UPS Express. Unterstützung der Zahlung mit telegrafischer Überweisung (T / T) oder PayPal.

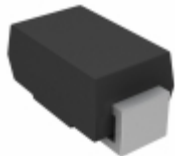
RFQ ESH1D-M3/61T E-Mail: [Info@Y-IC.com](mailto:Info@Y-IC.com)

### Sie können auch interessiert

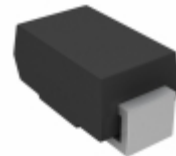
sein:



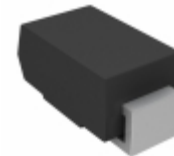
**ESH1DHE3/5AT**  
Electro-Films (EFI) / Vishay  
DIODE GEN PURP 200V 1A  
DO214AC



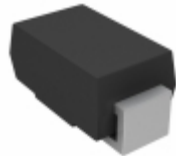
**ESH1DHE3/61T**  
Vishay Semiconductor Diodes  
Division  
DIODE GEN PURP 200V 1A  
DO214AC



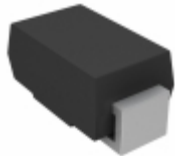
**ESH1DHE3/61T**  
Electro-Films (EFI) / Vishay  
DIODE GEN PURP 200V 1A  
DO214AC



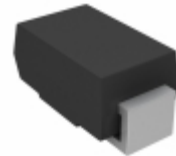
**ESH1DHE3/5AT**  
Vishay Semiconductor Diodes  
Division  
DIODE GEN PURP 200V 1A  
DO214AC



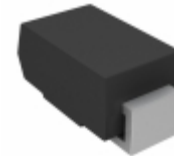
**ESH1D-M3/5AT**  
Electro-Films (EFI) / Vishay  
DIODE GEN PURP 200V 1A  
DO214AC



**ESH1D-M3/61T**  
Electro-Films (EFI) / Vishay  
DIODE GEN PURP 200V 1A  
DO214AC



**ESH1D-M3/5AT**  
Vishay Semiconductor Diodes  
Division  
DIODE GEN PURP 200V 1A  
DO214AC



**ESH1D-E3/61T**  
Vishay Semiconductor Diodes  
Division  
DIODE GEN PURP 200V 1A  
DO214AC

### Verwandtes Hot-Keyword

Mehr

ESH1D-M3/61T Vishay / Semiconductor - Diodes Division

ESH1D-M3/61T Datenblatt

ESH1D-M3/61T-Datenblätter

ESH1D-M3/61T PDF

Vishay / Semiconductor - Diodes Division ESH1D-M3/61T

ESH1D-M3/61T Electronic

ESH1D-M3/61T-Komponenten

ESH1D-M3/61T-Verteiler

ESH1D-M3/61T-Bild

ESH1D-M3/61T-Teil

ESH1D-M3/61T Preis

ESH1D-M3/61T Hersteller

ESH1D-M3/61T Bild

ESH1D-M3/61T Aktie

ESH1D-M3/61T Inventar

ESH1D-M3/61T Neu

ESH1D-M3/61T Original

ESH1D-M3/61T garantiert

ESH1D-M3/61T RFQ

ESH1D-M3/61T Online bestellen

Contact us: [Info@Y-IC.com](mailto:Info@Y-IC.com)

HINZUFÜGEN: Einheit A5-B5 Nr.509, 5 / F Sing Win Fabrikgebäude, 15-17 Shing Yip St, Kwun Tong, Kowloon, HongKong.

Copyright © 2019 YIC International Co., Limited