

**TAIYO YUDEN**

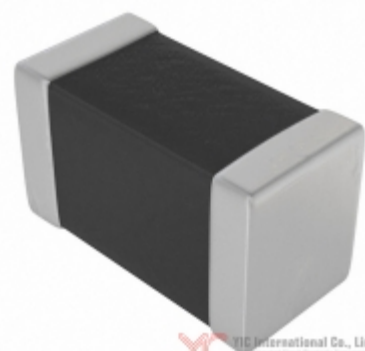


Image may be representation.  
See specs for product details.

## SMK316BJ472KF-T



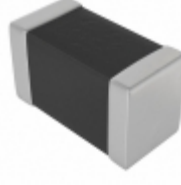
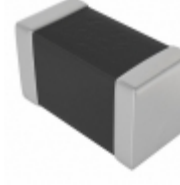
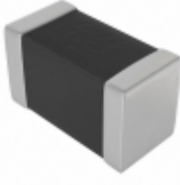

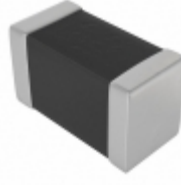
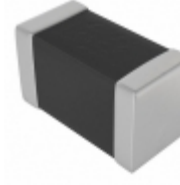
<b>Hersteller-Teilenummer:</b>	SMK316BJ472KF-T
<b>Hersteller / Marke:</b>	Taiyo Yuden
<b>Teil der Beschreibung:</b>	CAP CER 4700PF 630V X5R 1206
<b>Datenblätter:</b>	<a href="#">1.SMK316BJ472KF-T.pdf</a> <a href="#">2.SMK316BJ472KF-T.pdf</a>
<b>RoHS Status:</b>	Bleifrei / RoHS-konform
<b>Lagerzustand:</b>	New original, Stock Available.
<b>Liefern von:</b>	Hong Kong
<b>Versandweg:</b>	DHL/Fedex/TNT/UPS/EMS

### Spezifikationen

Teilenummer	SMK316BJ472KF-T
Hersteller	Taiyo Yuden
Beschreibung	CAP CER 4700PF 630V X5R 1206
Kategorie	Kondensatoren > Keramikkondensatoren
Teilstatus	Require For Quote & Check Stock
Serie	M
Spannung - Nennwert	630V
Betriebstemperatur	-55°C ~ 85°C
Bewertungen	-
Befestigungsart	Surface Mount, MLCC
Größe / Dimension	0.126" L x 0.063" W (3.20mm x 1.60mm)
Höhe - eingesteckt (max)	-
Eigenschaften	High Voltage
Kapazität	4700pF
Toleranz	±10%
Anwendungen	General Purpose
Leiter-Abstand	-
Verpackung / Gehäuse	1206 (3216 Metric)
Temperaturkoeffizient	X5R
Dicke (max)	0.049" (1.25mm)
Leitungsstil	-
Verpackung	Tape & Reel (TR)

SMK316BJ472KF-T ist neu im Original, Suche SMK316BJ472KF-T Datenblätter, PDF, Inventar bei Y-IC.com Online, Bestellen Sie SMK316BJ472KF-T Taiyo Yuden mit Garantie und Vertrauen. Anfrage SMK316BJ472KF-T: Info@Y-IC.com

Sie können auch interessiert sein:

 <b>SMK316BJ682KF-T</b> Taiyo Yuden CAP CER 6800PF 630V X5R 1206	 <b>SMK316BJ332KF-T</b> Taiyo Yuden CAP CER 3300PF 630V X5R 1206	 <b>SMK316BJ223KL-T</b> Taiyo Yuden CAP CER 0.022UF 630V X5R 1206	 <b>SMK316BJ223ML-T</b> Taiyo Yuden CAP CER 0.022UF 630V X5R 1206
 <b>SMK316BJ682MF-T</b> Taiyo Yuden CAP CER 6800PF 630V X5R 1206	 <b>SMK316BJ332MF-T</b> Taiyo Yuden CAP CER 3300PF 630V X5R 1206	 <b>SMK316BJ222MF-T</b> Taiyo Yuden CAP CER 2200PF 630V X5R 1206	 <b>SMK316SD101JD-T</b> Taiyo Yuden CAP CER 100PF 630V 1206

heiße Teile

Mehr

⚙ SMK316B7332KFHT	↔ SMK316B7332MF-T	⇒ SMK316B7332MFHT	D SMK316B7472KF-T	⇒ SMK316B7472KFHT
⊣ SMK316B7472MF-T	⚙ SMK316B7472MFHT	D SMK316B7682KF-T	⇒ SMK316B7682KFHT	⇒ SMK316B7682MF-T
⚙ SMK316B7682MFHT	⊣ SMK316BJ102KF-T	⚙ SMK316BJ102MF-T	↔ SMK316BJ103KF-T	⇒ SMK316BJ103MF-T
D SMK316BJ152KF-T	⚙ SMK316BJ152MF-T	⊣ SMK316BJ153KL-T	⚙ SMK316BJ153ML-T	⇒ SMK316BJ222KF-T
⇒ SMK316BJ222MF-T	↔ SMK316BJ223KL-T	⚙ SMK316BJ223ML-T	⊣ SMK316BJ332KF-T	⇒ SMK316BJ332MF-T
↔ SMK316BJ472MF-T	⇒ SMK316BJ682KF-T	D SMK316BJ682MF-T	⚙ SMK316SD101JD-T	⊣ SMK325B7223KN-T
⚙ SMK325B7223KNHT	D SMK325B7223MN-T	⇒ SMK325B7223MNHT	↔ SMK325B7333KN-T	⇒ SMK325B7333KNHT
⊣ SMK325B7333MN-T	⚙ SMK325B7333MNHT	↔ SMK325B7473KN-T	⇒ SMK325B7473KNHT	⇒ SMK325B7473KNHT
⚙ SMK325B7473MN-T	⊣ SMK325B7473MNHT	⚙ SMK325BJ333KN-T	D SMK325BJ333KN-T	⇒ SMK325BJ333MN-T
↔ SMK325BJ473KN-T	⚙ SMK325BJ473MN-T	⊣ SMK432B7104KM-T	⚙ SMK432B7104MM-T	⇒ SMK432B7473KM-T

Contact us: [Info@Y-IC.com](mailto:Info@Y-IC.com)

HINZUFÜGEN: Einheit A5-B5 Nr.509, 5 / F Sing Win Fabrikgebäude, 15-17 Shing Yip St, Kwun Tong, Kowloon, HongKong.

Copyright © 2019 YIC International Co., Limited