

TAIYO YUDEN

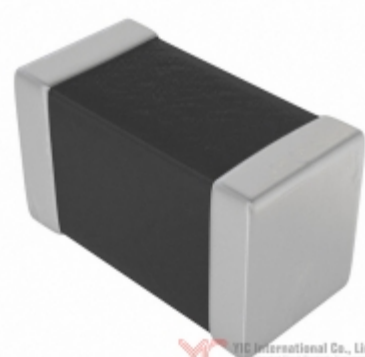


Image may be representation.
See specs for product details.

EMK316AB7475MLHT



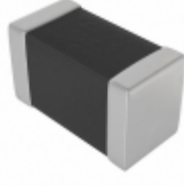



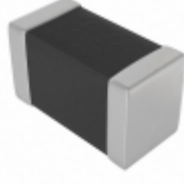

Hersteller-Teilenummer:	EMK316AB7475MLHT
Hersteller / Marke:	Taiyo Yuden
Teil der Beschreibung:	CAP CER 4.7UF 16V X7R 1206
Datenblätter:	1.EMK316AB7475MLHT.pdf 2.EMK316AB7475MLHT.pdf 3.EMK316AB7475MLHT.pdf 4.EMK316AB7475MLHT.pdf
RoHs Status:	Bleifrei / RoHS-konform
Lagerzustand:	New original, Stock Available.
Lieferrn von:	Hong Kong
Versandweg:	DHL/Fedex/TNT/UPS/EMS

Spezifikationen

Teilenummer	EMK316AB7475MLHT
Hersteller	Taiyo Yuden
Beschreibung	CAP CER 4.7UF 16V X7R 1206
Kategorie	Kondensatoren > Keramikkondensatoren
Teilstatus	Require For Quote & Check Stock
Serie	M
Spannung - Nennwert	16V
Betriebstemperatur	-55°C ~ 125°C
Bewertungen	AEC-Q200
Befestigungsart	Surface Mount, MLCC
Größe / Dimension	0.126" L x 0.063" W (3.20mm x 1.60mm)
Höhe - eingesteckt (max)	-
Eigenschaften	Ultra Low ESR
Kapazität	4.7µF
Toleranz	±20%
Anwendungen	Automotive, SMPS Filtering
Leiter-Abstand	-
Verpackung / Gehäuse	1206 (3216 Metric)
Temperaturkoeffizient	X7R
Dicke (max)	0.071" (1.80mm)
Leitungsstil	-
Fehlerrate	-
Verpackung	Tape & Reel (TR)

EMK316AB7475MLHT ist neu im Original, Suche EMK316AB7475MLHT Datenblätter, PDF, Inventar bei Y-IC.com Online, Bestellen Sie EMK316AB7475MLHT Taiyo Yuden mit Garantie und Vertrauen. Anfrage EMK316AB7475MLHT: Info@Y-IC.com

Sie können auch interessiert sein:

 EMK316AB7475KLHT Taiyo Yuden CAP CER 4.7UF 16V X7R 1206	 EMK316AB7106ML-T Taiyo Yuden CAP CER 10UF 16V X7R 1206	 EMK316B7105KL-T Taiyo Yuden CAP CER 1UF 16V X7R 1206	 EMK316ABJ226MD-T Taiyo Yuden CAP CER 22UF 16V X5R 1206
 EMK316ABJ226KL-T Taiyo Yuden CAP CER 22UF 16V X5R 1206	 EMK316B7105KF-T Taiyo Yuden CAP CER 1UF 16V X7R 1206	 EMK316ABJ226ML-T Taiyo Yuden CAP CER 22UF 16V X5R 1206	 EMK316AB7106MLHT Taiyo Yuden CAP CER 10UF 16V X7R 1206

heiße Teile

Mehr

⊗ EMK212BJ155KD-T	↔ EMK212BJ155MD-T	⇒ EMK212BJ225KD-T	D EMK212BJ225KG-T	↔ EMK212BJ225KGHT
⊣ EMK212BJ225MD-T	⊗ EMK212BJ225MG-T	D EMK212BJ225MGHT	⇒ EMK212BJ334KG-T	↔ EMK212BJ474KD-T
⊗ EMK212BJ475KD-T	⊣ EMK212BJ475KDHT	⊗ EMK212BJ475KG-T	↔ EMK212BJ475MD-T	↔ EMK212BJ475MG-T
D EMK212C6106KGST	⊗ EMK212F105Z	⊣ EMK212F105ZG-T	⊗ EMK212F225ZG-T	↔ EMK212SD333JD-T
⇒ EMK212SD333KD-T	↔ EMK316AB7106KL-T	⊗ EMK316AB7106KLHT	⊣ EMK316AB7106MLHT	↔ EMK316AB7475KLHT
↔ EMK316ABJ226KL-T	⇒ EMK316ABJ226MD-T	D EMK316ABJ226ML-T	⊗ EMK316B7105KF-T	⊣ EMK316B7105KL-T
⊗ EMK316B7105MF-T	D EMK316B7105ML-T	⇒ EMK316B7106KL-TD	↔ EMK316B7106ML-TD	↔ EMK316B7225KL-T
⊣ EMK316B7225KLHT	⊗ EMK316B7225ML-T	↔ EMK316B7225MLHT	⇒ EMK316B7335KL-T	↔ EMK316B7335ML-T
⊗ EMK316B7475KL-T	⊣ EMK316B7475KL-T	⊗ EMK316B7475ML-T	D EMK316B7684KF-T	↔ EMK316B7684MF-T
↔ EMK316BB7226ML-T	⊗ EMK316BBJ226MLHT	⊣ EMK316BC6226ML-T	⊗ EMK316BJ106KD-T	↔ EMK316BJ106KL-T

Contact us: Info@Y-IC.com

HINZUFÜGEN: Einheit A5-B5 Nr.509, 5 / F Sing Win Fabrikgebäude, 15-17 Shing Yip St, Kwun Tong, Kowloon, HongKong.

Copyright © 2019 YIC International Co., Limited