

TAIYO YUDEN

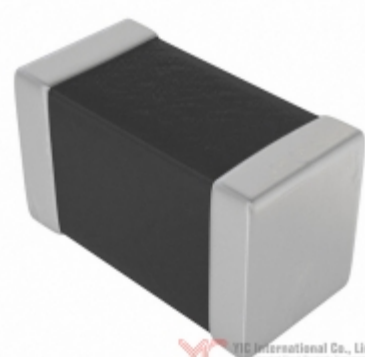


Image may be representation.
See specs for product details.

LMK316BJ106ML-T

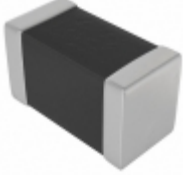
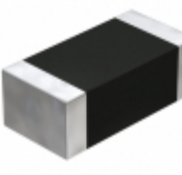
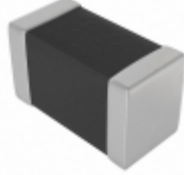
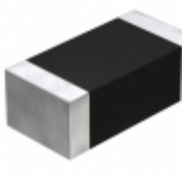
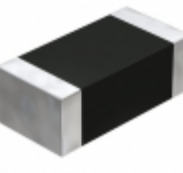
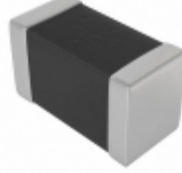
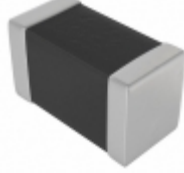
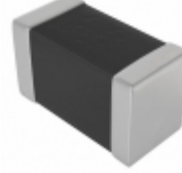
Hersteller-Teilenummer:	LMK316BJ106ML-T
Hersteller / Marke:	Taiyo Yuden
Teil der Beschreibung:	CAP CER 10UF 10V X5R 1206
Datenblätter:	1.LMK316BJ106ML-T.pdf 2.LMK316BJ106ML-T.pdf
RoHs Status:	Bleifrei / RoHS-konform
Lagerzustand:	New original, Stock Available.
Liefern von:	Hong Kong
Versandweg:	DHL/Fedex/TNT/UPS/EMS

Spezifikationen

Teilenummer	LMK316BJ106ML-T
Hersteller	Taiyo Yuden
Beschreibung	CAP CER 10UF 10V X5R 1206
Kategorie	Kondensatoren > Keramikkondensatoren
Teilstatus	Require For Quote & Check Stock
Serie	M
Spannung - Nennwert	10V
Betriebstemperatur	-55°C ~ 85°C
Bewertungen	-
Befestigungsart	Surface Mount, MLCC
Größe / Dimension	0.126" L x 0.063" W (3.20mm x 1.60mm)
Höhe - eingesteckt (max)	-
Eigenschaften	-
Kapazität	10µF
Toleranz	±20%
Anwendungen	General Purpose
Leiter-Abstand	-
Verpackung / Gehäuse	1206 (3216 Metric)
Temperaturkoeffizient	X5R
Dicke (max)	0.071" (1.80mm)
Leitungsstil	-
Verpackung	Tape & Reel (TR)

LMK316BJ106ML-T ist neu im Original, Suche LMK316BJ106ML-T Datenblätter, PDF, Inventar bei Y-IC.com Online, Bestellen Sie LMK316BJ106ML-T Taiyo Yuden mit Garantie und Vertrauen. Anfrage LMK316BJ106ML-T: Info@Y-IC.com

Sie können auch interessiert sein:

 LMK316BJ226ML-T Taiyo Yuden CAP CER 22UF 10V X5R 1206	 LMK316BJ226MD-T Taiyo Yuden CAP CER 22UF 10V X5R 1206	 LMK316BJ106KLHT Taiyo Yuden CAP CER 10UF 10V X5R 1206	 LMK316BJ225MD-T Taiyo Yuden CAP CER 2.2UF 10V X5R 1206
 LMK316BJ106MD-T Taiyo Yuden CAP CER 10UF 10V X5R 1206	 LMK316BJ106KL-T Taiyo Yuden CAP CER 10UF 10V X5R 1206	 LMK316BJ106MLHT Taiyo Yuden CAP CER 10UF 10V X5R 1206	 LMK316B7475MLHT Taiyo Yuden CAP CER 4.7UF 10V X7R 1206

heiße Teile

Mehr

⊗ LMK316AB7106MLHT	↔ LMK316AB7226KL-TR	⇒ LMK316AB7226ML-TR	D LMK316ABJ226KL-T	⇒ LMK316ABJ226KLHT
⊣ LMK316ABJ226MD-T	⊗ LMK316ABJ226ML-T	D LMK316ABJ226MLHT	⇒ LMK316ABJ476ML-T	⇒ LMK316B7106KL-T
⊗ LMK316B7106KL-TD	⊣ LMK316B7106ML-T	⊗ LMK316B7106ML-TD	↔ LMK316B7225KL-T	⇒ LMK316B7225ML-T
D LMK316B7335KL-T	⊗ LMK316B7335ML-T	⊣ LMK316B7475KL-T	⊗ LMK316B7475KLHT	⇒ LMK316B7475ML-T
⇒ LMK316B7475MLHT	↔ LMK316BJ106KD-T	⊗ LMK316BJ106KL-T	⊣ LMK316BJ106KLHT	⇒ LMK316BJ106MD-T
↔ LMK316BJ106MLHT	⇒ LMK316BJ225MD-T	D LMK316BJ226KL-T	⊗ LMK316BJ226MD-T	⊣ LMK316BJ226ML-T
⊗ LMK316BJ335KD-T	D LMK316BJ335KF-T	⇒ LMK316BJ335KL-T	↔ LMK316BJ335MD-T	⇒ LMK316BJ335MF-T
⊣ LMK316BJ475KD-T	⊗ LMK316BJ475KL	↔ LMK316BJ475KL-T	⇒ LMK316BJ475KLHT	⇒ LMK316BJ475MD-T
⊗ LMK316BJ475ML-T	⊣ LMK316BJ475MLHT	⊗ LMK316BJ476ML-T	D LMK316F106ZF-T	⇒ LMK316F106ZL-T
↔ LMK316F226ZL-T	⊗ LMK316F226ZLT	⊣ LMK316F475ZD-T	⊗ LMK325ABJ107MM-P	⇒ LMK325ABJ107MM-T

Contact us: Info@Y-IC.com

HINZUFÜGEN: Einheit A5-B5 Nr.509, 5 / F Sing Win Fabrikgebäude, 15-17 Shing Yip St, Kwun Tong, Kowloon, HongKong.

Copyright © 2019 YIC International Co., Limited