



## LT1791IN

Hersteller-Teilenummer: [LT1791IN](#)

Hersteller / Marke: [LT](#)

Teil der Beschreibung: [LT1791IN LT](#)

RoHs Status:

Lagerzustand: New original, 8015 pcs Stock Available.

Liefern von: Hong Kong

Versandweg: DHL/Fedex/TNT/UPS/EMS

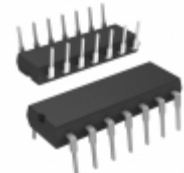
Image may be representation.  
See specs for product details.

### Spezifikationen

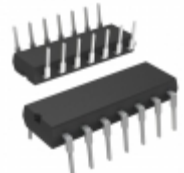
Teilenummer	<a href="#">LT1791IN</a>
Hersteller	<a href="#">LT</a>
Beschreibung	<a href="#">LT1791IN LT</a>
Kategorie	<a href="#">Integrierte Schaltungen (ICs) &gt; Specialized Hot ICs</a>
Teilstatus	8015 pcs Stock
Serie	DIP-14
RoHs Status	Lead free / RoHS Compliant
Bedingung	New Original Stock
Garantie	100% Perfect Functions
Vorlaufzeit	2-3days after payment.
Zahlung	PayPal / Telegraphic Transfer / Western Union
Versand per	DHL / Fedex / UPS
Hafen	HongKong
Anfrage-E-Mail	<a href="mailto:Info@Y-IC.com">Info@Y-IC.com</a>

LT1791IN ist neu im Original, Suche LT1791IN Datenblätter, PDF, Inventar bei Y-IC.com Online, Bestellen Sie LT1791IN LT mit Garantie und Vertrauen. Anfrage LT1791IN: [Info@Y-IC.com](mailto:Info@Y-IC.com)

Sie können auch interessiert sein:



**LT1791IN#PBF**  
ADI (Analog Devices, Inc.)  
IC TXRX RS485/RS422 60V 14-DIP



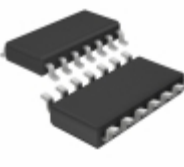
**LT1791IN#PBF**  
Linear Technology / Analog Devices  
IC TXRX RS485/RS422 60V 14-DIP



**LT1791HS#PBF**  
Linear Technology / Analog Devices  
IC TXRX RS485/RS422 60V 14-SOIC



**LT1791HS#TRPBF**  
Linear Technology / Analog Devices  
IC TXRX RS485/RS422 60V 14-SOIC



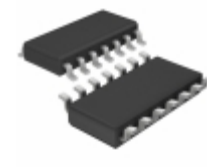
**LT1791IS#PBF**  
Linear Technology / Analog Devices  
IC TXRX RS485/RS422 60V 14-SOIC



**LT1791IS#PBF**  
ADI (Analog Devices, Inc.)  
IC TXRX RS485/RS422 60V 14-SOIC



**LT1791IS**  
LINEAR  
LT1791IS LINEAR



**LT1791HS#TRPBF**  
ADI (Analog Devices, Inc.)  
IC TXRX RS485/RS422 60V 14-SOIC

### heiße Teile

Mehr

<a href="#">LT1790BIS6-2.5#TRPBF</a>	<a href="#">LT1790BIS6-2.5#TRPBF</a>	<a href="#">LT1790BIS6-3#TRMPBF</a>	<a href="#">LT1790BIS6-3#TRMPBF</a>	<a href="#">LT1790BIS6-3#TRPBF</a>
<a href="#">LT1790BIS6-3#TRPBF</a>	<a href="#">LT1790BIS6-3.3</a>	<a href="#">LT1790BIS6-3.3#TR</a>	<a href="#">LT1790BIS6-3.3#TRPBF</a>	<a href="#">LT1790BIS6-3.3#TRPBF</a>
<a href="#">LT1790BIS6-4.096#TRPBF</a>	<a href="#">LT1790BIS6-4.096#TRPBF</a>	<a href="#">LT1790BIS6-5</a>	<a href="#">LT1790BIS6-5#TRMPBF</a>	<a href="#">LT1790BIS6-5#TRMPBF</a>
<a href="#">LT1790BIS6-5#TRPBF</a>	<a href="#">LT1790BIS6-5#TRPBF</a>	<a href="#">LT1791ACN</a>	<a href="#">LT1791ACS</a>	<a href="#">LT1791ACS#TRPBF</a>
<a href="#">LT1791ACS#TRPBF</a>	<a href="#">LT1791AIS</a>	<a href="#">LT1791CN</a>	<a href="#">LT1791CS</a>	<a href="#">LT1791CS5</a>
<a href="#">LT1791IS</a>	<a href="#">LT1791IS#TRPBF</a>	<a href="#">LT1791IS#TRPBF</a>	<a href="#">LT1792AIS8</a>	<a href="#">LT1792CN8</a>
<a href="#">LT1792CS8</a>	<a href="#">LT1792IS8</a>	<a href="#">LT1793AIN8</a>	<a href="#">LT1793AIS8</a>	<a href="#">LT1793CN8</a>
<a href="#">LT1793CS8</a>	<a href="#">LT1793IS8</a>	<a href="#">LT1795CFE</a>	<a href="#">LT1795CFE#TR</a>	<a href="#">LT1795CSW</a>
<a href="#">LT1795CSW#TR</a>	<a href="#">LT1795DOE</a>	<a href="#">LT1795IFE</a>	<a href="#">LT1795IFE#TR</a>	<a href="#">LT1795ISW</a>
<a href="#">LT1795ISW#TR</a>	<a href="#">LT1796CN8</a>	<a href="#">LT1796CS8</a>	<a href="#">LT1796CS8#TRPBF</a>	<a href="#">LT1796CS8#TRPBF</a>

Contact us:[Info@Y-IC.com](mailto:Info@Y-IC.com)

HINZUFÜGEN: Einheit A5-B5 Nr.509, 5 / F Sing Win Fabrikgebäude, 15-17 Shing Yip St, Kwun Tong, Kowloon, HongKong.

Copyright © 2019 YIC International Co., Limited