

TAIYO YUDEN

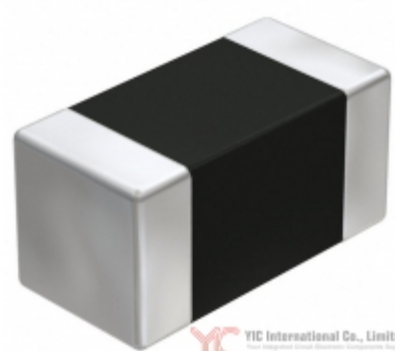


Image may be representation.
See specs for product details.

UMK105CH270JV-F






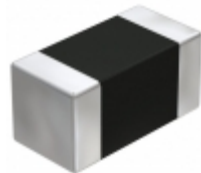


Hersteller-Teilenummer:	UMK105CH270JV-F
Hersteller / Marke:	Taiyo Yuden
Teil der Beschreibung:	CAP CER 27PF 50V C0H 0402
Datenblätter:	1.UMK105CH270JV-F.pdf 2.UMK105CH270JV-F.pdf
RoHs Status:	Bleifrei / RoHS-konform
Lagerzustand:	New original, Stock Available.
Liefern von:	Hong Kong
Versandweg:	DHL/Fedex/TNT/UPS/EMS

Spezifikationen

Teilenummer	UMK105CH270JV-F
Hersteller	Taiyo Yuden
Beschreibung	CAP CER 27PF 50V C0H 0402
Kategorie	Kondensatoren > Keramikkondensatoren
Teilstatus	Require For Quote & Check Stock
Serie	M
Spannung - Nennwert	50V
Betriebstemperatur	-55°C ~ 125°C
Bewertungen	-
Befestigungsart	Surface Mount, MLCC
Größe / Dimension	0.039" L x 0.020" W (1.00mm x 0.50mm)
Höhe - eingesteckt (max)	-
Eigenschaften	-
Kapazität	27pF
Toleranz	±5%
Anwendungen	General Purpose
Leiter-Abstand	-
Verpackung / Gehäuse	0402 (1005 Metric)
Temperaturkoeffizient	C0H
Dicke (max)	0.022" (0.55mm)
Leitungsstil	-
Verpackung	Tape & Reel (TR)

UMK105CH270JV-F ist neu im Original, Suche UMK105CH270JV-F Datenblätter, PDF, Inventar bei Y-IC.com Online, Bestellen Sie UMK105CH270JV-F Taiyo Yuden mit Garantie und Vertrauen. Anfrage UMK105CH270JV-F: Info@Y-IC.com

Sie können auch interessiert sein:

 UMK105CH271JV-F Taiyo Yuden CAP	 UMK105CH271JVHF Taiyo Yuden CAP	 UMK105CH221KV-F Taiyo Yuden CAP CER 220PF 50V CH 0402	 UMK105CH220JVHF Taiyo Yuden CAP
 UMK105CH221JVHF Taiyo Yuden CAP	 UMK105CH270JVHF Taiyo Yuden CAP	 UMK105CH220KV-F Taiyo Yuden CAP CER 22PF 50V C0H 0402	 UMK105CH270KV-F Taiyo Yuden CAP CER 27PF 50V C0H 0402

heiße Teile

Mehr

⊗ UMK105CH090FW-F	↔ UMK105CH100DV-F	⇒ UMK105CH100DW-F	D UMK105CH100FW-F	⇒ UMK105CH101JV-F
⊣ UMK105CH101KV-F	⊗ UMK105CH120JV-F	D UMK105CH120JW-F	⇒ UMK105CH120KW-F	⇒ UMK105CH121JV-F
⊗ UMK105CH121KV-F	⊣ UMK105CH150JV-F	⊗ UMK105CH150JW-F	↔ UMK105CH150KW-F	⇒ UMK105CH151JV-F
D UMK105CH151KV-F	⊗ UMK105CH180JV-F	⊣ UMK105CH180JW-F	⊗ UMK105CH180KW-F	⇒ UMK105CH181JV-F
⇒ UMK105CH181KV-F	↔ UMK105CH220JV-F	⊗ UMK105CH220KV-F	⊣ UMK105CH221JV-F	⇒ UMK105CH221KV-F
↔ UMK105CH270KV-F	⇒ UMK105CH330JV-F	D UMK105CH330JW-F	⊗ UMK105CH330KV-F	⊣ UMK105CH390JV-F
⊗ UMK105CH390KV-F	D UMK105CH430JV-F	⇒ UMK105CH470JV-F	↔ UMK105CH470JW-F	⇒ UMK105CH470KV-F
⊣ UMK105CH560JV-F	⊗ UMK105CH560KV-F	↔ UMK105CH680JV-F	⇒ UMK105CH680KV-F	⇒ UMK105CH820JV-F
⊗ UMK105CH820KV-F	⊣ UMK105CH8R2DV-F	⊗ UMK105CH8R2DW-F	D UMK105CJ030CV-F	⇒ UMK105CJ030CW-F
↔ UMK105CJ030DV-F	⊗ UMK105CJ030DW-F	⊣ UMK105CK010CV-F	⊗ UMK105CK010CW-F	⇒ UMK105CK010DV-F

Contact us: Info@Y-IC.com

HINZUFÜGEN: Einheit A5-B5 Nr.509, 5 / F Sing Win Fabrikgebäude, 15-17 Shing Yip St, Kwun Tong, Kowloon, HongKong.

Copyright © 2019 YIC International Co., Limited