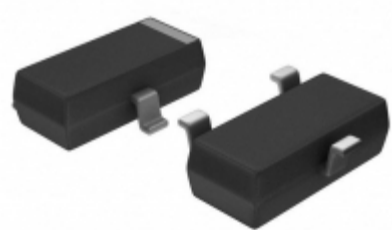


Panasonic



YIC International Co., Limited.

Image may be representation.
See specs for product details.

DSA2001S0L


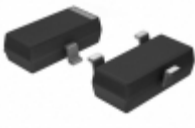
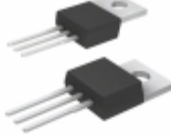

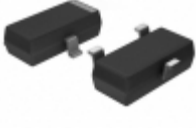

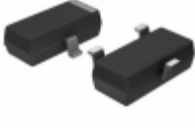

Hersteller-Teilenummer:	DSA2001S0L
Hersteller / Marke:	Panasonic
Teil der Beschreibung:	TRANS PNP 50V 0.1A MINI3
RoHs Status:	Bleifrei / RoHS-konform
Lagerzustand:	New original, 264933 pcs Stock Available.
Liefern von:	Hong Kong
Versandweg:	DHL/Fedex/TNT/UPS/EMS

Spezifikationen

Teilenummer	DSA2001S0L
Hersteller	Panasonic
Beschreibung	TRANS PNP 50V 0.1A MINI3
Kategorie	Diskrete Halbleiterprodukte > Transistoren-Bipolar
Teilstatus	264933 pcs Stock
Serie	-
Betriebstemperatur	150 °C (TJ)
Befestigungsart	Surface Mount
Leistung - max	200mW
Verpackung / Gehäuse	TO-236-3, SC-59, SOT-23-3
Supplier Device-Gehäuse	Mini3-G3-B
Transistor-Typ	PNP
Strom - Kollektor (Ic) (max)	100mA
Spannung - Kollektor-Emitter-Durchbruch (max)	50V
VCE Sättigung (Max) @ Ib, Ic	500mV @ 10mA, 100mA
Strom - Collector Cutoff (Max)	100µA
DC Stromgewinn (HFE) (Min) @ Ic, VCE	290 @ 2mA, 10V
Frequenz - Übergang	150MHz
Verpackung	Tape & Reel (TR)

DSA2001S0L ist neu im Original, Suche DSA2001S0L Datenblätter, PDF, Inventar bei Y-IC.com Online, Bestellen Sie DSA2001S0L Panasonic mit Garantie und Vertrauen. Anfrage DSA2001S0L: Info@Y-IC.com

Sie können auch interessiert sein:

 DSA2-18A IXYS Integrated Circuits Division DIODE AVALANCHE 1800V 3.6A AXIAL	 DSA2001R0L Panasonic TRANS PNP 50V 0.1A MINI3	 DSA20C100PB IXYS Corporation DIODE ARRAY SCHOTTKY 100V TO220	 DSA200200L Panasonic TRANS PNP 50V 0.5A MINI3
 DSA2002S0L Panasonic TRANS PNP 50V 0.5A MINI3	 DSA2-18A IXYS Corporation DIODE AVALANCHE 1800V 3.6A AXIAL	 DSA200100L Panasonic TRANS PNP 50V 0.1A MINI3	 DSA2002R0L Panasonic TRANS PNP 50V 0.5A MINI3

heiße Teile

Mehr

DSA1518-14A	DSA1518-14E	DSA1518-15A	DSA1518-15E	DSA1518-16A
DSA1518-16E	DSA1518-18A	DSA1518-18E	DSA1518-20A	DSA1518-20E
DSA15IM200UC	DSA17-06A	DSA17-08A	DSA17-12A	DSA17-12B
DSA17-14A	DSA17-16A	DSA17-16B	DSA17-18A	DSA2-12A
DSA2-12A	DSA2-18A	DSA2-18A	DSA200100L	DSA2001R0L
DSA200200L	DSA2002R0L	DSA200AA160	DSA20C45PB	DSA300100L
DSA30C150PB	DSA321SCL/1XTV26000	DSA340200L	DSA35-06A	DSA35-08A
DSA35-12A	DSA35-12B	DSA35-14A	DSA35-16A	DSA35-16B
DSA35-18A	DSA403-38GG	DSA403-40GG	DSA403-42GG	DSA403-44GG
DSA403-44L	DSA403-45GG	DSA403-46GG	DSA403-48GG	DSA403-50GG

Contact us: Info@Y-IC.com

HINZUFÜGEN: Einheit A5-B5 Nr.509, 5 / F Sing Win Fabrikgebäude, 15-17 Shing Yip St, Kwun Tong, Kowloon, HongKong.

Copyright © 2019 YIC International Co., Limited