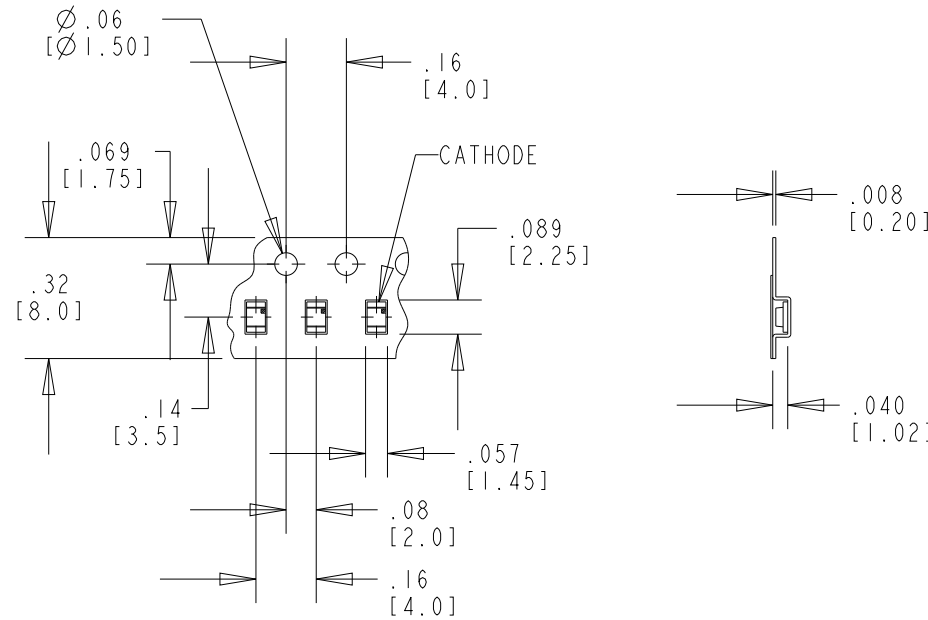
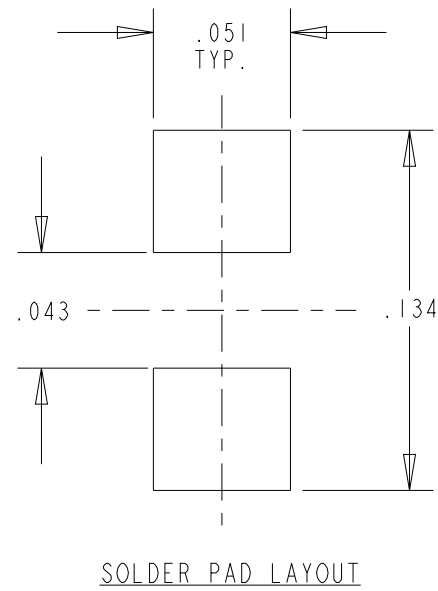
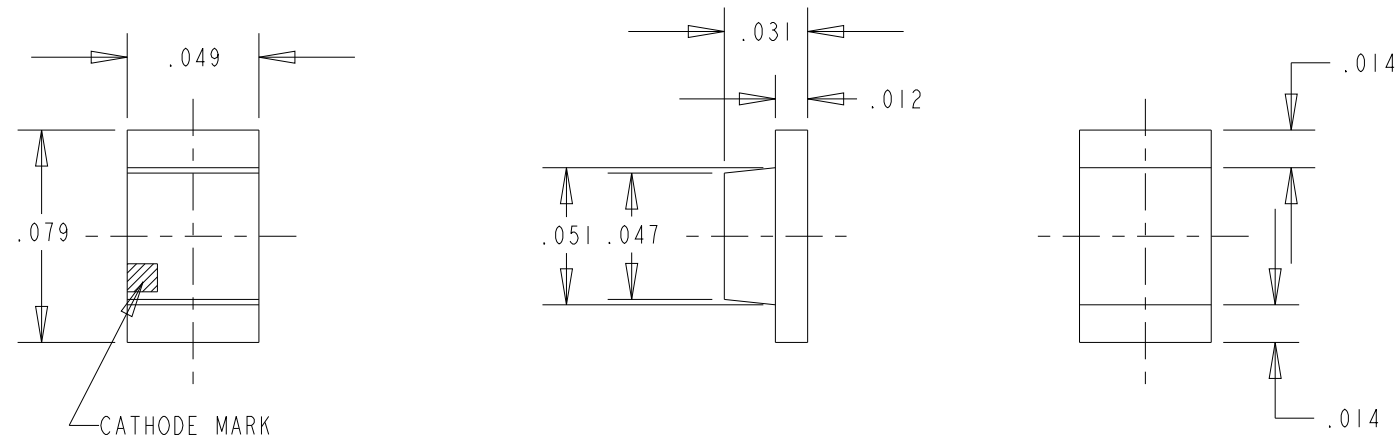


OPERATING CHARACTERISTICS AT 25 °C AMBIENT															
DIALIGHT P/N	LED COLOR	LED CHIP MATERIAL	EPOXY COLOR	I _F (mA)	FORWARD VOLTAGE (V)		LUMINOUS INTENSITY (mcd)			REVERSE CURRENT (μA) (@ V _R = 5 V)	PEAK WAVELENGTH (nm)	DOMINANT WAVELENGTH (nm)			VIEWING ANGLE (2θ 1/2) (DEGREES)
					TYP.	MAX.	MIN.	TYP.	MAX.	MAX.		MIN.	TYP.	MAX.	
597-3003-407F	RED	AlInGaP	WHITE DIFFUSED	20	1.9	2.4	25.0	50.0	75.0	100	635	620	626	635	150
597-3222-407F	AMBER			20	1.9	2.4	25.0	65.0	105.0	100	592	583	590	597	150

REV.	ECN NO.	REVISIONS	DRN.	CKD.	APP.	DATE
A	—	NEW RELEASE	MC	—	N.O.	7-14-97
B	—	ADDED P/N: 597-3222-407 AND WHITE DIFF. WAS CLEAR DIFF.	MC	—	D.C.	8-15-97
C	—	ADDED NOTES 2 AND 3.	TC	D.C.	N.O.	6-9-99
D	—	UPDATED LED SPEC.	YIS	—	—	—
E	—	REMOVED 597-3212-407, ADDED F SUFFIX IN THE PART NUMBERS	BP	—	NO	11-6-17



NOTES:

- PARTS PACKAGED ON 180 mm DIA. REEL, 8 mm TAPE, 4000/REEL (SEE SKETCH).
- TAPE AND REEL LEDS MAY REQUIRE RE-TAPING AFTER TWELVE MONTHS.
- DIALIGHT PART NUMBER: 597-3003-407F, 597-3222-407F.

ABSOLUTE MAXIMUM RATING AT 25°C AMBIENT	597-XXXX-407F		UNITS
	3001F	3222F	
POWER DISSIPATION	81		mW
CONTINUOUS FORWARD CURRENT	30		mA
PEAK FORWARD CURRENT (< 1/20 DUTY CYCLE T _w < 1 msec)	100		mA
DERATE LINEAR FROM 25 °C	.43		mA/°C
REVERSE VOLTAGE	5		V
OPERATING TEMPERATURE	-40 TO +85		°C
STORAGE TEMPERATURE	-40 TO +100		°C

THIS DRAWING AND THE CONTENTS HEREIN ARE CONFIDENTIAL AND THE SOLE PROPERTY OF DIALIGHT CORP. REPRODUCTION OF THIS DRAWING OR CONSTRUCTION OF ANY PARTS WITHIN THIS DRAWING ARE FORBIDDEN WITHOUT THE WRITTEN CONSENT OF DIALIGHT CORP.

DIALIGHT CORP. INTERNAL REFERENCE ONLY = 3D MODEL : MODEL NAME-E.1

SCALE	DRAWING NUMBER	REV
SCALE: 1:1	C-16248	E
TOLERANCES: UNLESS OTHERWISE SPECIFIED	TITLE: SMT LED	
ANGLES: ±3°	MATERIAL:	
FINISH:		
FSCM 83330	1501 ROUTE 34 SOUTH FARMINGDALE, NJ 07727 (732) 919-3119 www.dialight.com	
SHEET 1 OF 1	FAMILY TABLE:	