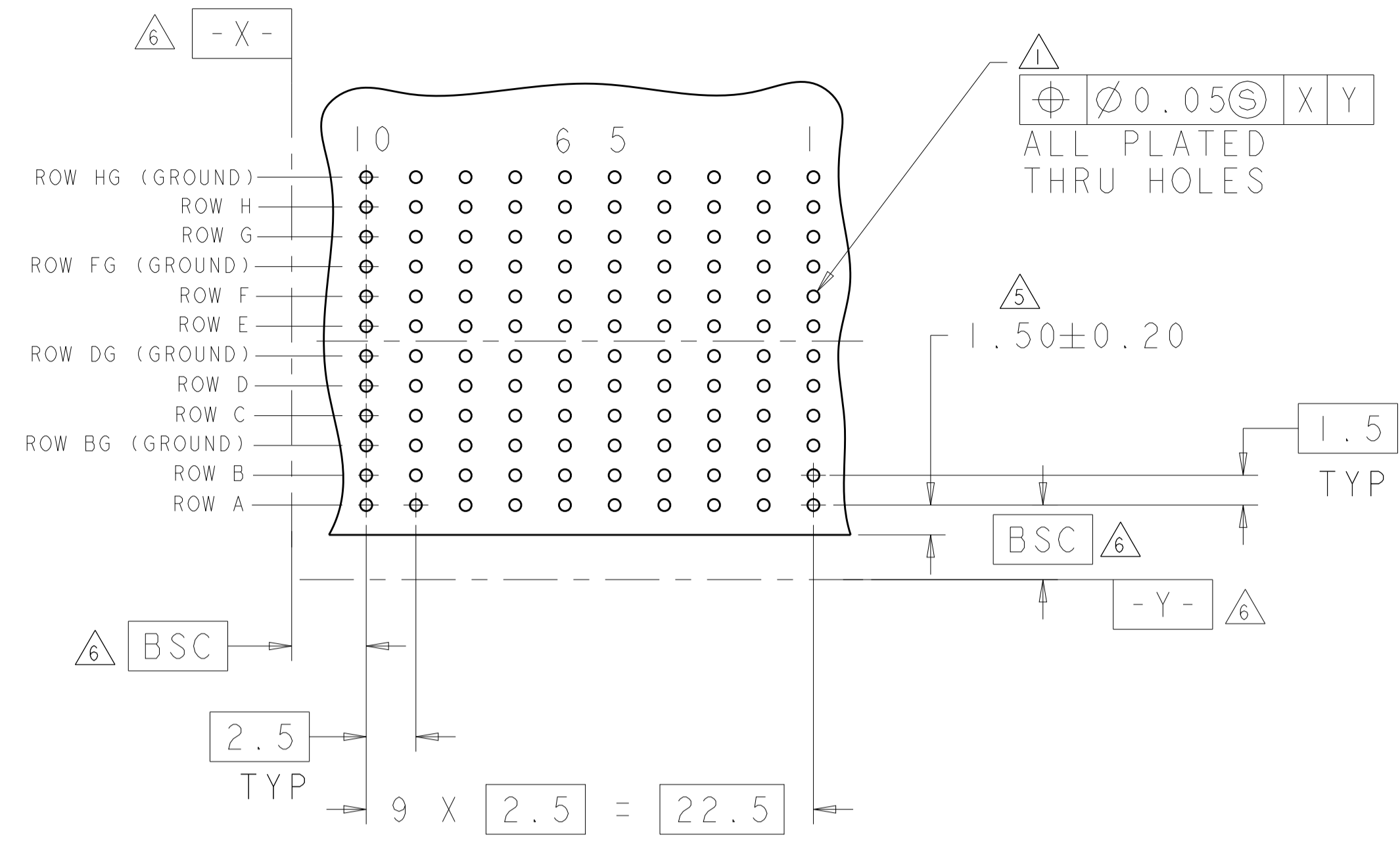
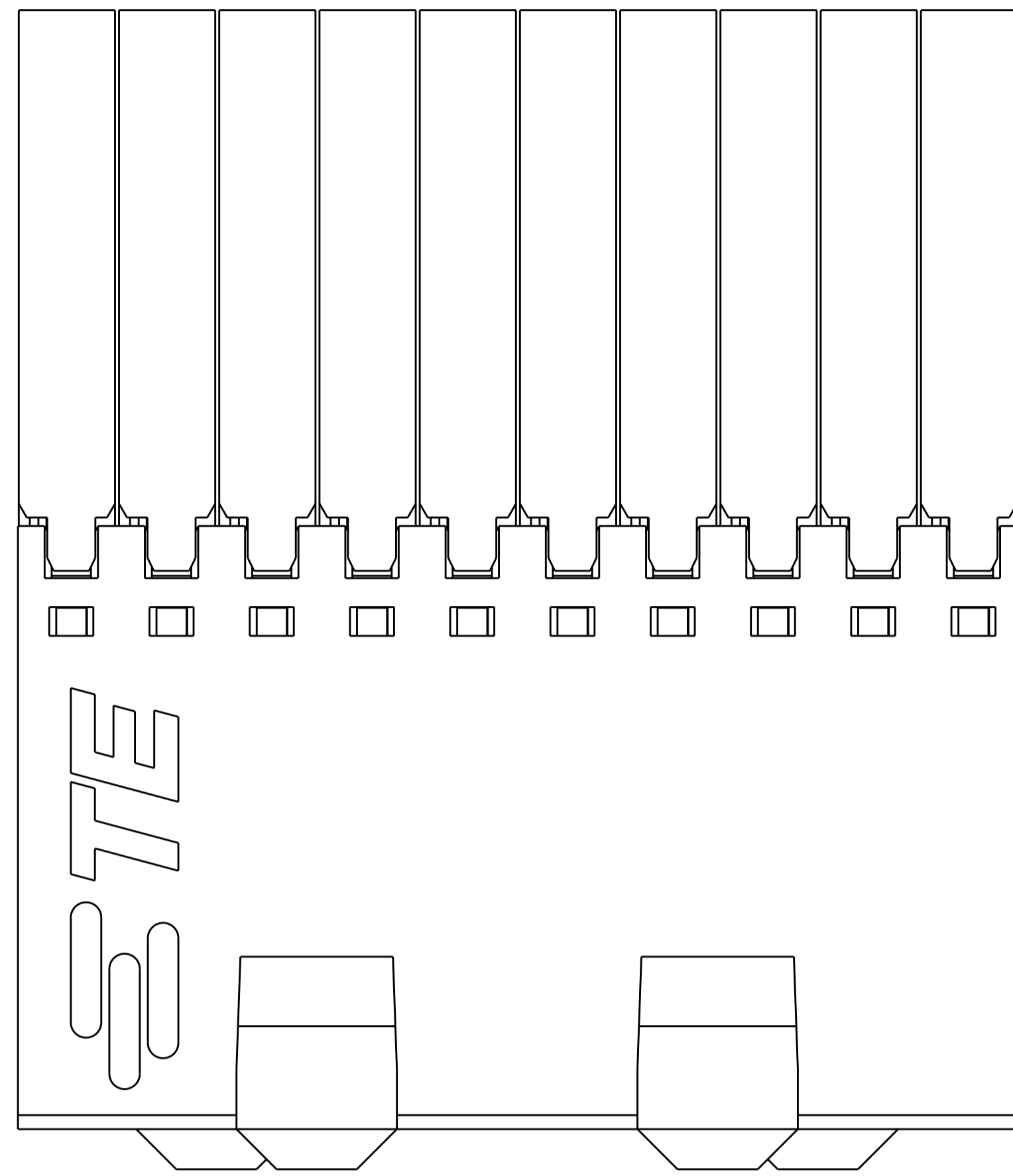
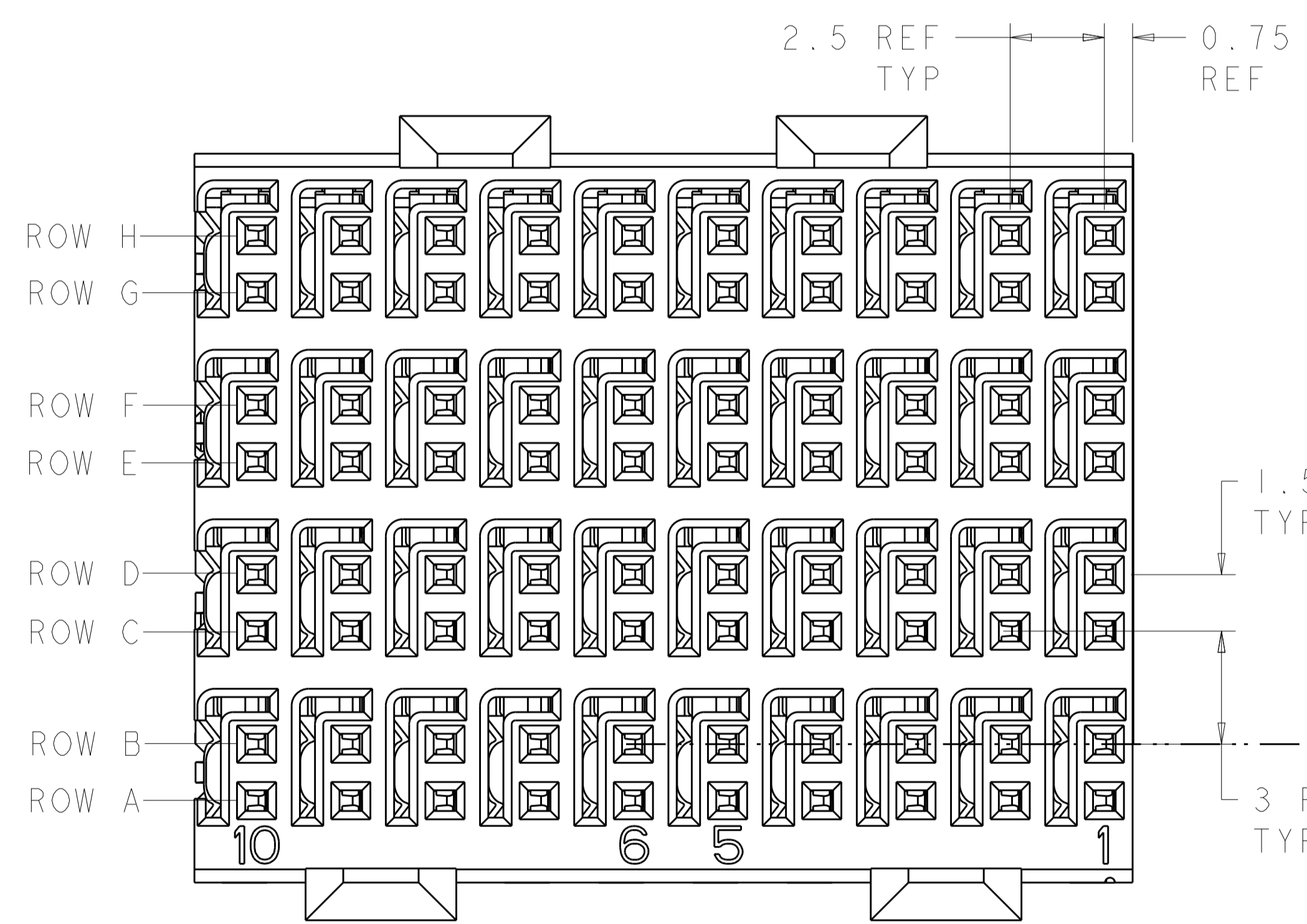


REVISIONS				
REV	DATE	DESCRIPTION	BY	APP'D
D	14APR2014	REVISED PER ECO-14-005095	AP	RP
E	26SEP2016	REVISED PER ECO-16-008845	AP	RP

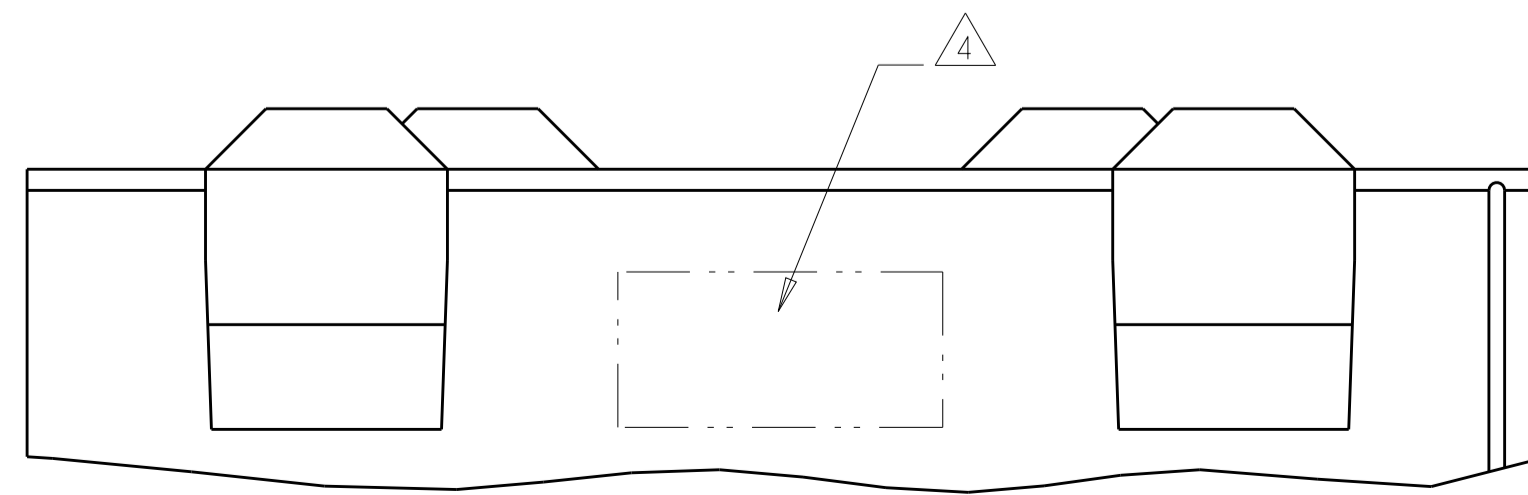
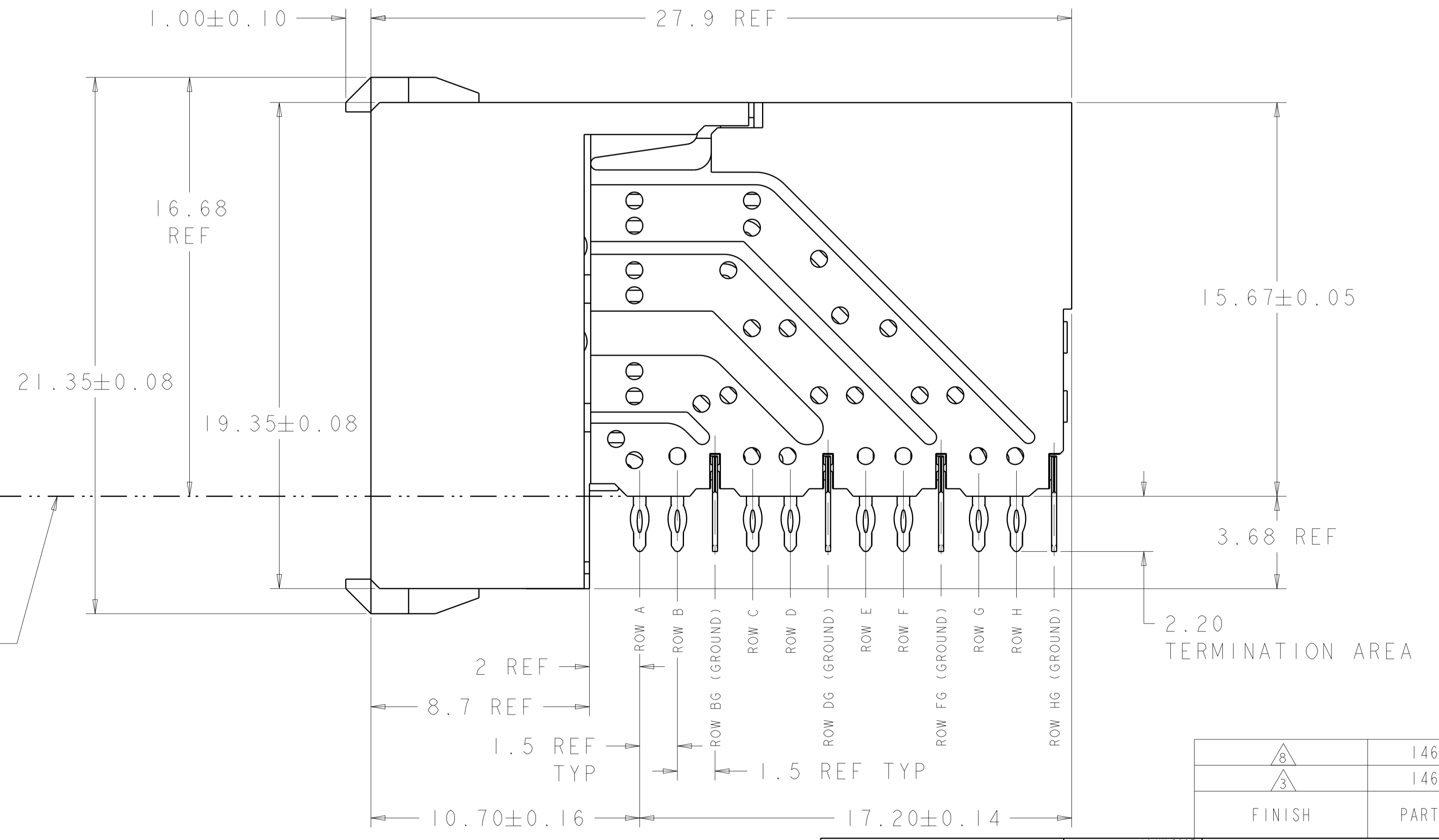


RECOMMENDED PC BOARD LAYOUT,
 DAUGHTER BOARD,
 COMPONENT SIDE SHOWN
 SCALE 4:1

- 1. REFERENCE APPLICATION SPEC 114-13059 FOR RECOMMENDED PLATED THRU HOLE DIAMETER AND PLATING THICKNESSES.
- 2. MATERIAL:
 SHIELD - PHOSPHOR BRONZE
 CONTACT - COPPER-NICKEL-SILICON
 HOUSING, CHICKLET AND CHICKLET COVER - GLASS FILLED POLYESTER, UL 94V-0 RATED.
- 3. FINISH: CONTACT AND SHIELD
 MATING AREA - 1.27µm MIN GOLD OVER 1.27µm MIN NICKEL
 COMPLIANT PIN AREA - 0.5µm MIN BRIGHT TIN-LEAD OVER 1.27µm MIN NICKEL
- 4. CONNECTOR MARKED WITH PART NUMBER AND DATE CODE IN APPROXIMATE AREA SHOWN
- 5. DIMENSION APPLIES TO CENTERLINE OF THRU HOLE.
- 6. DATUMS AND BASIC DIMENSIONS ESTABLISHED BY CUSTOMER.
- 7. CONTACT AREA LUBRICATED WITH BELLCORE APPROVED LUBRICANT. TECHNICAL REFERENCE: GR-1217-CORE, ISSUE 1, NOVEMBER 1995.
- 8. FINISH: CONTACT AND SHIELD
 MATING AREA - 2.54µm MIN GOLD OVER 1.27µm MIN NICKEL
 COMPLIANT PIN AREA - 0.5µm MIN MATTE TIN OVER 1.27µm MIN NICKEL



TOP SURFACE OF DAUGHTER CARD



8	1469627-2
3	1469627-1
FINISH	PART NUMBER

THIS DRAWING IS A CONTROLLED DOCUMENT.

DIMENSIONS:	TOLERANCES UNLESS OTHERWISE SPECIFIED:	OWN: B. CARBO 16 JUL 2007	CHK: R. PATTERSON 16 JUL 2007
mm	0 PLC ±	APVD: R. PATTERSON 16 JUL 2007	NAME: RECEPTACLE ASSEMBLY, 4 PAIR, HMZd
	1 PLC ±	PRODUCT SPEC:	SIZE: A100779
	2 PLC ±	APPLICATION SPEC:	CAGE CODE: 1469627
	3 PLC ±	WEIGHT:	RESTRICTED TO:
	4 PLC ±	CUSTOMER DRAWING	SCALE: 8:1 SHEET 1 OF 1 REV E
	ANGLES ±		
MATERIAL:	FINISH:		
	SEE TABLE		