

NOTES: VALID UNLESS OTHERWISE SPECIFIED

1. GENERAL:

- a. APPLICATION SPECIFICATION SEE: AS-160014-001
- b. PRODUCT SPECIFICATION SEE: PS-160014-001
- c. PACKAGING SPECIFICATION PER MOLEX DRAWING: PK-31302-266
- d. PARTS MUST BE IN COMPLIANCE TO MOLEX CHEMICAL SUBSTANCES FOR PRODUCTS AND PACKAGING SPECIFICATION: ES-40000-5016
- e. DATA MUST BE SUBMITTED UNDER THE MOLEX PART NUMBER TO IMDS (COMPANY ID#13255)
- f. FLAMMABILITY REQUIREMENT: PER ISO3795 OR GMW3191
  - 1. BURN RATE 100 mm/MIN MAXIMUM
  - 2. MATERIAL MUST BE SELF EXTINGUISHING

2. DESIGN - MATERIALS:

- a. MATERIAL: SPS/PA66-GF20
- 25% MAX REGRIND BY WEIGHT
- COLOR: SEE BOM TABLE
- b. VOLUME: SEE BOM TABLE (ESTIMATED)

3. DESIGN - GEOMETRY:

- a. ALL GRAPHIC DATA IS BASIC (NO TOLERANCE) AND MUST BE TAKEN FROM THE DATA FILE AT ITS LATEST REVISION.
- b. PRODUCT DESIGN MODEL NUMBER(S): EM-160030-0001 & EM-160030-0005
- c. GEOMETRIC DIMENSIONS AND TOLERANCES PER ASME Y14.5M-2009
- d. GENERAL TOLERANCES:
  - LINEAR: PER DIN 16901 - PRECISION ENGINEERING
  - ANGULAR: ±3°
- e. EDGES AND UNDIMENSIONED DETAILS PER ISO13715
- f. CORNERS SHOWN AS SHARP TO BE R 0.2 MAX.
- g. LETTERING SHALL BE 0.15 MAX RAISED IN 0.25 MAX RECESS PAD. THIS INCLUDES RECYCLING CODE, CAVITY ID, VENDOR IDENTIFICATION, AND CUSTOMER MATERIAL NUMBER. (for small parts: LETTERING SHALL BE 0.10 MAX RAISED IN 0.15 MAX RECESS PAD)

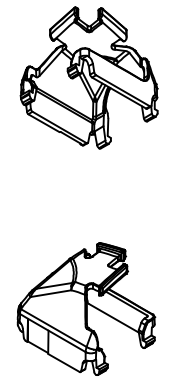
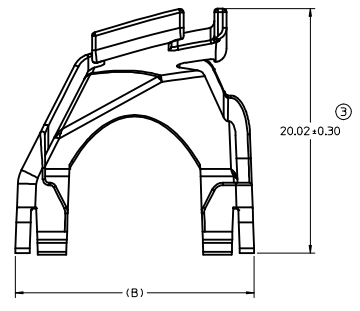
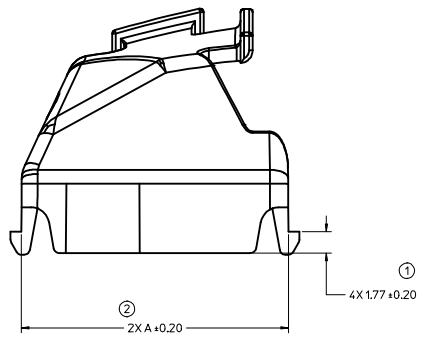
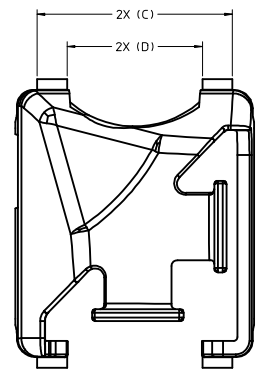
4. DESIGN - MANUFACTURING:

- a. DRAFT TO BE WITHIN TOLERANCE.
  - PLUS DRAFT - INDICATES A DIMENSION REPRESENTS THE SMALLEST SIZE OF A FEATURE. DRAFT WILL ADD MATERIAL.
  - MINUS DRAFT - INDICATES A DIMENSION REPRESENTS THE LARGEST SIZE OF A FEATURE. DRAFT WILL REMOVE MATERIAL.
- b. ALLOWABLE FLASH MAX 0.25 HIGH BY MAX 0.13 THICK.
- c. ALLOWABLE SPLIT/PARTING LINE MISMATCH 0.2 MAX.
- d. EJECTOR PIN MARKS TO BE FLUSH TO 0.25 MAX DEPRESSED. LOCATION MUST BE APPROVED BY PRODUCT ENGINEERING. EJECTOR PIN MARKS NOT PERMISSIBLE ON OR NEAR DATUM TARGET AREA.
- e. ALLOWABLE GATE VESTIGE FLUSH TO 0.25 MAX PROTRUSION. LOCATION MUST BE APPROVED BY PRODUCT ENGINEERING
- f. VISUAL DEFECTS SHALL MEET COSMETIC STANDARD PS-45499-002 (Class B)
- g. NO EXTERNAL MOLD RELEASE AGENT ALLOWED DURING MANUFACTURING.

BOM TABLE						
MOLEX COMPONENTS PART NO.	COLOR	VOLUME (MMP ± 5%)	DIM "A"	DIM "B"	DIM "C"	DIM "D"
1600300005	DARK GRAY	818.8	21.87	19.54	16.00	11.08
1600300001	STONE GRAY	756.6	19.60	18.74	15.20	10.28

A	Release for Production SAP # 10797036 JCONDON 09/26/2016
1	INITIAL RELEASE SAP # 10669754 JCONDON 12/18/2014

INITIAL RELEASE EC NO: UAU2017-0271 DRAWN: CONDON 2016/09/26 CHKD: APPR: KDEKOSKI 2016/09/26 REV DESCRIPTION	QUALITY SYMBOLS ∇=0 ∇=0 ∇=0	GENERAL TOLERANCES (UNLESS SPECIFIED) mm ANGULAR ± DRAFT WHERE APPLICABLE MUST REMAIN WITHIN DIMENSIONS	DIMENSION STYLE MM ONLY	SCALE 5:1	DESIGN UNITS METRIC	THIRD ANGLE PROJECTION	DRAWN BY KDEKOSKI DATE 2014/12/18	CHECKED BY JCONDON DATE 2014/12/18	APPROVED BY KDEKOSKI DATE 2014/12/30	MATERIAL NO. CHARTED	DOCUMENT NO. SD-160030-001	SHEET NO. 1 OF 1
	WIRE DRESS COVER STAK50H 											



BOM TABLE						
MOLEX COMPONENTS PART NO.	COLOR	VOLUME (MMP ± 5%)	DIM "A"	DIM "B"	DIM "C"	DIM "D"
1600300005	DARK GRAY	818.8	21.87	19.54	16.00	11.08
1600300001	STONE GRAY	756.6	19.60	18.74	15.20	10.28

- NOTES: VALID UNLESS OTHERWISE SPECIFIED
- GENERAL:
    - APPLICATION SPECIFICATION SEE: AS-160014-001
    - PRODUCT SPECIFICATION SEE: PS-160014-001
    - PACKAGING SPECIFICATION PER MOLEX DRAWING: PK-31302-266
    - PARTS MUST BE IN COMPLIANCE TO MOLEX CHEMICAL SUBSTANCES FOR PRODUCTS AND PACKAGING SPECIFICATION: ES-40000-5016
    - DATA MUST BE SUBMITTED UNDER THE MOLEX PART NUMBER TO IMDS (COMPANY ID#13255)
    - FLAMMABILITY REQUIREMENT: PER ISO3795 OR GMW3191
      - BURN RATE 100 mm/MIN MAXIMUM
      - MATERIAL MUST BE SELF EXTINGUISHING
  - DESIGN - MATERIALS:
    - MATERIAL: SPS/PA66-GF20  
25% MAX REGRIND BY WEIGHT  
COLOR: SEE BOM TABLE
    - VOLUME: SEE BOM TABLE (ESTIMATED)
  - DESIGN - GEOMETRY:
    - ALL GRAPHIC DATA IS BASIC (NO TOLERANCE) AND MUST BE TAKEN FROM THE DATA FILE AT ITS LATEST REVISION.
    - PRODUCT DESIGN MODEL NUMBER(S): EM-160030-0001 & EM-160030-0005
    - GEOMETRIC DIMENSIONS AND TOLERANCES PER ASME Y14.5M-2009
    - GENERAL TOLERANCES:
      - LINEAR: PER DIN 16901 - PRECISION ENGINEERING
      - ANGULAR: ±3°
    - EDGES AND UNDIMENSIONED DETAILS PER ISO13715
    - CORNERS SHOWN AS SHARP TO BE R 0.2 MAX.
    - LETTERING SHALL BE 0.15 MAX RAISED IN 0.25 MAX RECESS PAD. THIS INCLUDES RECYCLING CODE, CAVITY ID, VENDOR IDENTIFICATION, AND CUSTOMER MATERIAL NUMBER. (for small parts: LETTERING SHALL BE 0.10 MAX RAISED IN 0.15 MAX RECESS PAD)
  - DESIGN - MANUFACTURING:
    - DRAFT TO BE WITHIN TOLERANCE.
      - PLUS DRAFT - INDICATES A DIMENSION REPRESENTS THE SMALLEST SIZE OF A FEATURE. DRAFT WILL ADD MATERIAL.
      - MINUS DRAFT - INDICATES A DIMENSION REPRESENTS THE LARGEST SIZE OF A FEATURE. DRAFT WILL REMOVE MATERIAL.
    - ALLOWABLE FLASH MAX 0.25 HIGH BY MAX 0.13 THICK.
    - ALLOWABLE SPLIT/PARTING LINE MISMATCH 0.2 MAX.
    - EJECTOR PIN MARKS TO BE FLUSH TO 0.25 MAX DEPRESSED. LOCATION MUST BE APPROVED BY PRODUCT ENGINEERING. EJECTOR PIN MARKS NOT PERMISSIBLE ON OR NEAR DATUM TARGET AREA.
    - ALLOWABLE GATE VESTIGE FLUSH TO 0.25 MAX PROTRUSION. LOCATION MUST BE APPROVED BY PRODUCT ENGINEERING
    - VISUAL DEFECTS SHALL MEET COSMETIC STANDARD PS-45499-002 (Class B)
    - NO EXTERNAL MOLD RELEASE AGENT ALLOWED DURING MANUFACTURING.

A	Release for Production SAP # 10797036 JCONDON 09/26/2016
1	INITIAL RELEASE SAP # 10669754 JCONDON 12/18/2014

INITIAL RELEASE EC NO: UAU2017-0271 DRAWN: JCONDON 2016/09/26 CHKD: APPR: KDEKOSKI 2016/09/26 REV DESCRIPTION	QUALITY SYMBOLS ∇=0 ∇=0 ∇=0	GENERAL TOLERANCES (UNLESS SPECIFIED) mm ANGULAR ±	DIMENSION STYLE MM ONLY	SCALE 5:1	DESIGN UNITS METRIC	THIRD ANGLE PROJECTION
	DRAWN BY: KDEKOSKI CHECKED BY: JCONDON APPROVED BY: KDEKOSKI DATE: 2014/12/18 DATE: 2014/12/18 DATE: 2014/12/30	4 PLACES 3 PLACES 2 PLACES 1 PLACE 0 PLACE	DRAFT WHERE APPLICABLE MUST REMAIN WITHIN DIMENSIONS	MATERIAL NO. CHARTED	TITLE WIRE DRESS COVER STAK50H	DOCUMENT NO. SD-160030-001

**molex**

THIS DRAWING CONTAINS INFORMATION THAT IS PROPRIETARY TO MOLEX INCORPORATED AND SHOULD NOT BE USED WITHOUT WRITTEN PERMISSION