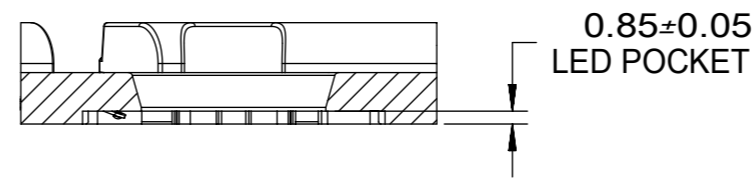
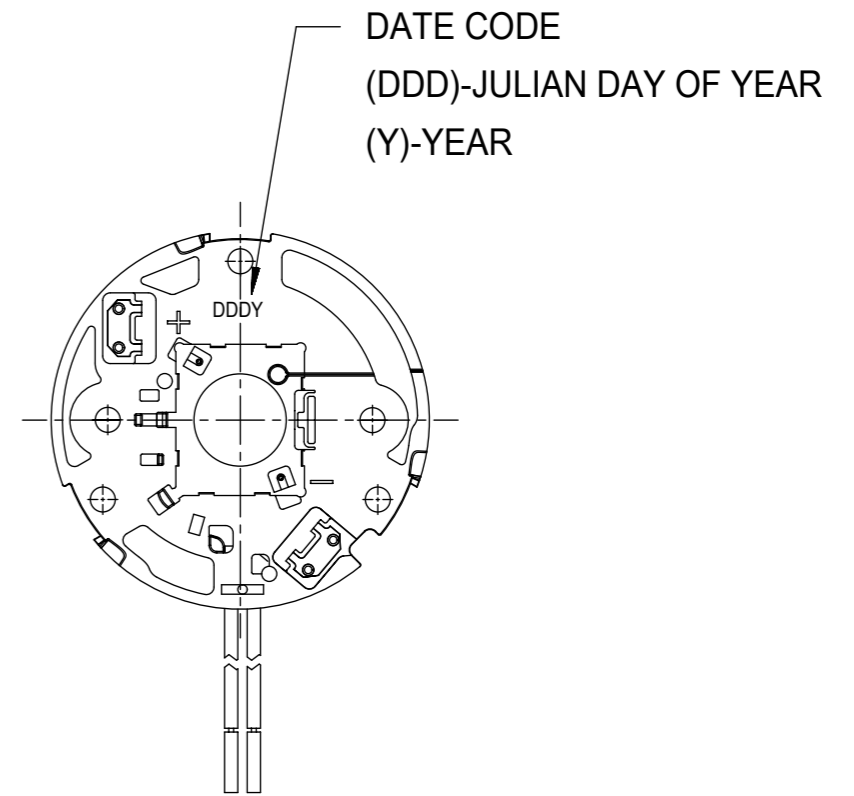
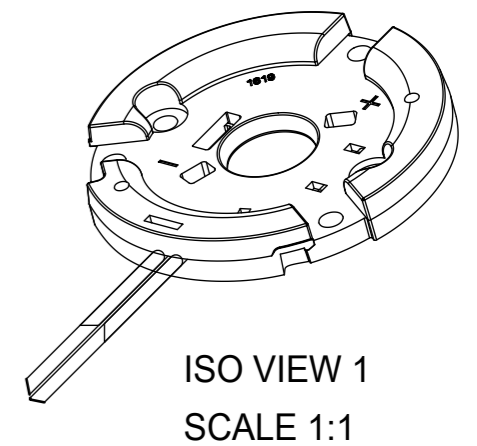


Section X-X

SEE DETAIL 1



DETAIL 1
Scale 2:1



ISO VIEW 1
SCALE 1:1

NOTES:

1. MATERIALS: HOUSING: POLYESTER (PBT), GLASS FILLED, UL94 V-0, COLOR: WHITE; TERMINALS: COPPER ALLOY. OPTIONAL: HEAT SHRINK TUBING
2. PLATING: TERMINAL CONTACT : SELECT GOLD (Au) OVER NICKEL (Ni).
3. WIRE SPECIFICATION: UL 3266, 125C, 300V, 20AWG
4. PRODUCT SPECIFICATION: PS-180555-002
5. PACKAGING SPECIFICATION: PK-180559-013 AND PK-180559-014.
6. APPLICATION SPECIFICATION: AS-180555-200.
7. DESIGNED TO BE USED WITH LUMILEDS COB 1202/1203.
8. MOUNT HOLDER UTILIZING M3 SCREWS, TORQUE: 0.4 MINIMUM NEWTON METERS, 0.8 NEWTON METERS MAX.
9. UL 8754 RECOGNITION PENDING. FILE NUMBER: TBD
10. THIS PRODUCT IS ELV AND ROHS COMPLIANT
11. ALL DIMENSIONS IN PARENTHESIS (XX.XX) ARE FOR REFERENCE ONLY.

PENDING APPROVAL

THIS DRAWING CONTAINS INFORMATION THAT IS PROPRIETARY TO MOLEX ELECTRONIC TECHNOLOGIES, LLC AND SHOULD NOT BE USED WITHOUT WRITTEN PERMISSION									
SYMBOLS	DIMENSION UNITS		SCALE		CURRENT REV DESC:				
	mm	1:1							
▽ = 0	GENERAL TOLERANCES (UNLESS SPECIFIED)				EC NO: 628958 DRWN: AKUMAR19 2019/04/24 CHK'D: APPR: INITIAL REVISION: DRWN: MDEVITO001 2015/02/20 APPR: GMEYER 2015/04/15				
▽ = 0	4 PLACES	±							
▽ = 0	3 PLACES	±							
▽ = 0	2 PLACES	±	0.13						
▽ = 0	1 PLACE	±	0.25						
▽ = 0	0 PLACES	±			ANGULAR TOL ± 0.5°		DRAFT WHERE APPLICABLE MUST REMAIN WITHIN DIMENSIONS		
■ = 0	THIRD ANGLE PROJECTION		DRAWING		SERIES		MATERIAL NUMBER		CUSTOMER
▽ = 0	A3-SIZE		180555		SEE TABLE		GENERAL MARKET		SHEET NUMBER 1 OF 3

molex

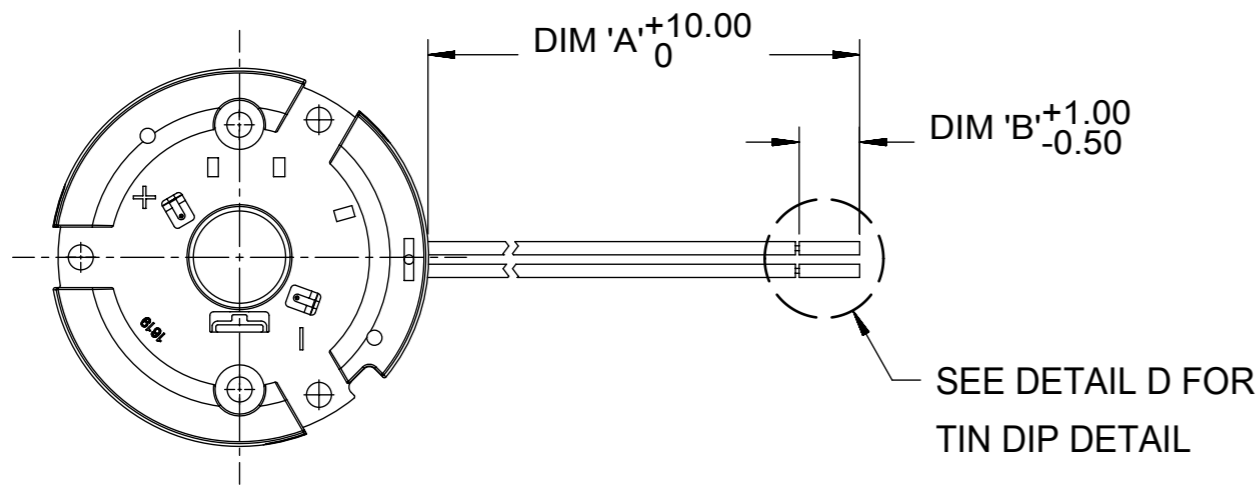
SLIMRAY COB HOLDER
ASSEMBLY 16MM X 19MM

PRODUCT CUSTOMER DRAWING

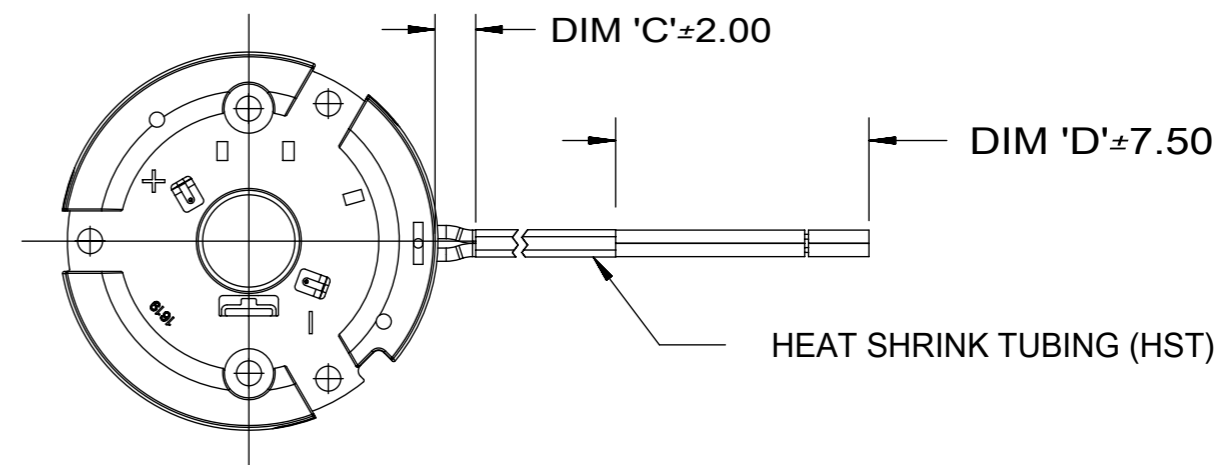
DOCUMENT NUMBER	DOC TYPE	DOC PART	REVISION
SD-180555-131	PSD	000	B

DOCUMENT STATUS	RQ	RELEASE DATE	
-----------------	----	--------------	--

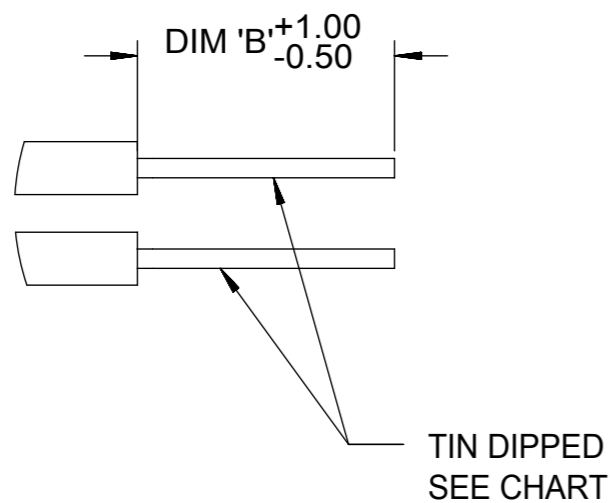
MOLEX PART NUMBER	DESCRIPTION	WIRE LENGTH	WIRE TYPE	FINISH	HEAT SHRINK TUBING	DIM. 'A'	DIM. 'B'	DIM. 'C'	DIM. 'D'
180555-1031	COB HOLDER W/O TUBING	600	STRANDED	TIN DIPPED	NO	600	8.5	X	X
180555-1034	COB HOLDER W/O TUBING	250	STRANDED	TIN DIPPED	NO	250	8.5	X	X
180555-1038	COB HOLDER WITH HST	600	STRANDED	TIN DIPPED	YES (WHT)	600	8.5	5	22.5



COB HOLDER WITHOUT HEAT SHRINK TUBING



COB HOLDER WITH HEAT SHRINK TUBING



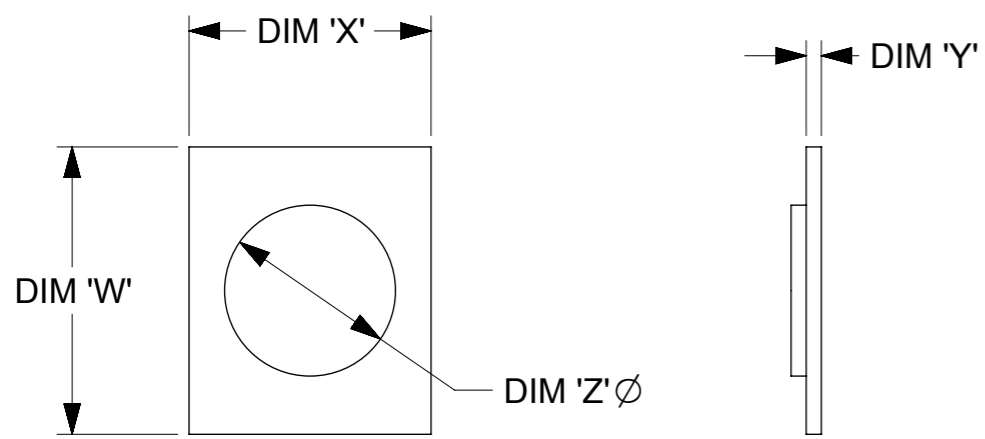
DETAIL D
Scale 4:1

PENDING APPROVAL

SYMBOLS		THIS DRAWING CONTAINS INFORMATION THAT IS PROPRIETARY TO MOLEX ELECTRONIC TECHNOLOGIES, LLC AND SHOULD NOT BE USED WITHOUT WRITTEN PERMISSION		CURRENT REV DESC:		molex	
▽ = 0	mm	SCALE	1:1	EC NO: 628958		SLIMRAY COB HOLDER	
▽ = 0	GENERAL TOLERANCES (UNLESS SPECIFIED)			DRWN: AKUMAR19 2019/04/24		ASSEMBLY 16MM X 19MM	
▽ = 0		MM	INCH	CHK'D:		PRODUCT CUSTOMER DRAWING	
▽ = 0	4 PLACES ±			APPR:		DOCUMENT NUMBER	
▽ = 0	3 PLACES ±			INITIAL REVISION:		SD-180555-131	
▽ = 0	2 PLACES ± 0.13			DRWN: MDEVITO001 2015/02/20		DOC TYPE	
▽ = 0	1 PLACE ± 0.25			APPR: GMEYER 2015/04/15		DOC PART	
⊠ = 0	ANGULAR TOL ± 0.5°			MATERIAL NUMBER		REVISION	
■ = 0	DRAFT WHERE APPLICABLE MUST REMAIN WITHIN DIMENSIONS	THIRD ANGLE PROJECTION	DRAWING	SERIES	CUSTOMER	SHEET NUMBER	
▽ = 0		⊕	A3-SIZE	180555	GENERAL MARKET	2 OF 3	

DOCUMENT STATUS	RQ	RELEASE DATE

COB MFG	TYPE	DIM 'W'	DIM 'X'	DIM 'Y'	DIM 'Z'
LUMILEDS	LUXEON 1202/1203	19.0	16.0	1.0	11.3
NICHIA	NFC*L036B*	19.0	16.0	1.0	10.7



COB LED

PENDING APPROVAL

SYMBOLS	THIS DRAWING CONTAINS INFORMATION THAT IS PROPRIETARY TO MOLEX ELECTRONIC TECHNOLOGIES, LLC AND SHOULD NOT BE USED WITHOUT WRITTEN PERMISSION		CURRENT REV DESC:		molex		
	▽ = 0	mm	SCALE 1:1			SLIMRAY COB HOLDER ASSEMBLY 16MM X 19MM	
	▽ = 0	GENERAL TOLERANCES (UNLESS SPECIFIED)		EC NO: 628958 DRWN: AKUMAR19 2019/04/24 CHK'D: APPR:			
	▽ = 0		MM			INCH	
▽ = 0	4 PLACES ±	±			PRODUCT CUSTOMER DRAWING		
▽ = 0	3 PLACES ±	±					
▽ = 0	2 PLACES ±	0.13	±		DOCUMENT NUMBER SD-180555-131		
▽ = 0	1 PLACE ±	0.25	±			DOC TYPE PSD	
▽ = 0	0 PLACES ±	±			DOC PART 000		
▽ = 0	ANGULAR TOL ±	0.5°			REVISION B		
▽ = 0	DRAFT WHERE APPLICABLE MUST REMAIN WITHIN DIMENSIONS	THIRD ANGLE PROJECTION	DRAWING	SERIES	MATERIAL NUMBER	CUSTOMER	SHEET NUMBER
▽ = 0			A3-SIZE	180555	SEE TABLE	GENERAL MARKET	3 OF 3

DOCUMENT STATUS	RQ	RELEASE DATE	
-----------------	----	--------------	--