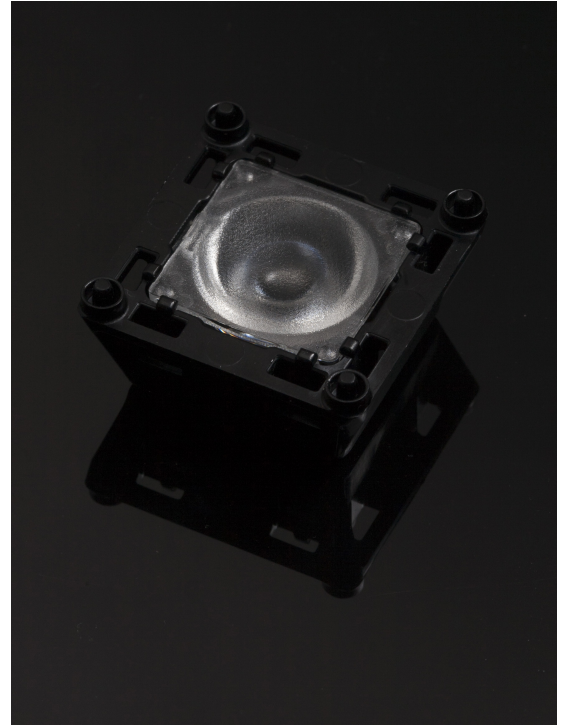


FLORENTINA-1-MRK-W

~50° wide beam. Compatible with ultra high power LEDs.

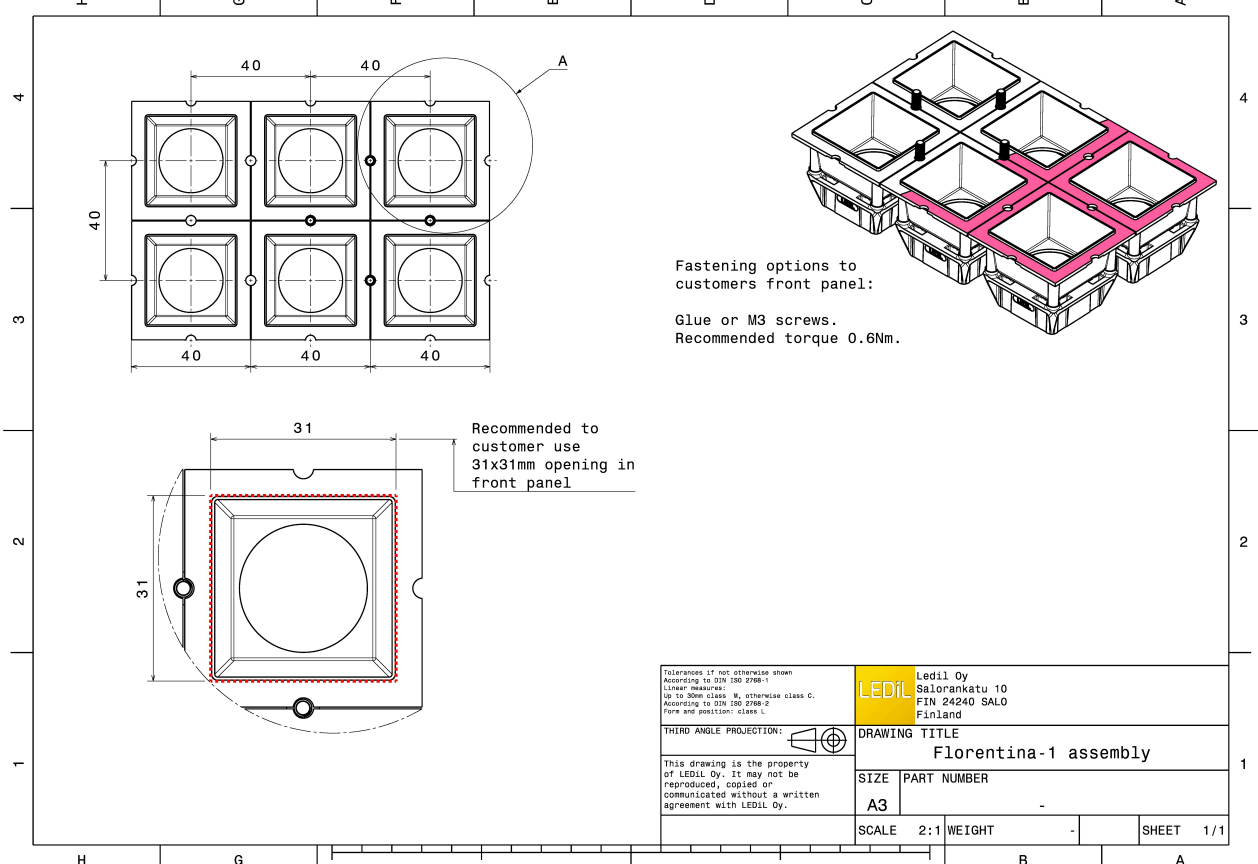
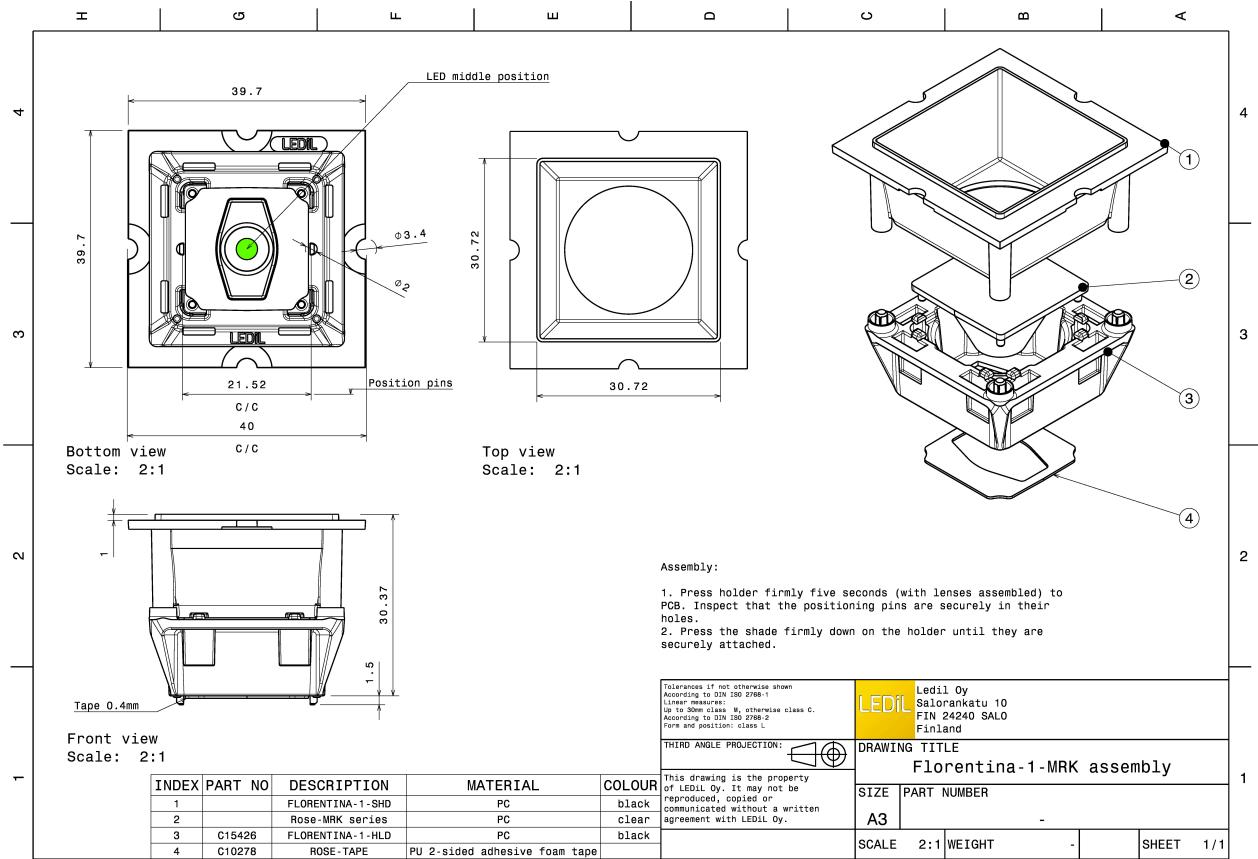
TECHNICAL SPECIFICATIONS:

Dimensions	39.7 mm
Height	13 mm
Fastening	pin
Colour	black
Box size	480 x 280 x 300 mm
Box weight	7.9 kg
Quantity in Box	840 pcs
ROHS compliant	yes ⓘ



MATERIAL SPECIFICATIONS:

Component	Type	Material	Colour
ROSE-MRK-W	Single lens	PC	clear
FLORENTINA-1-HLD	Holder	PC	black
ROSE-TAPE	Tape	PU tape	black

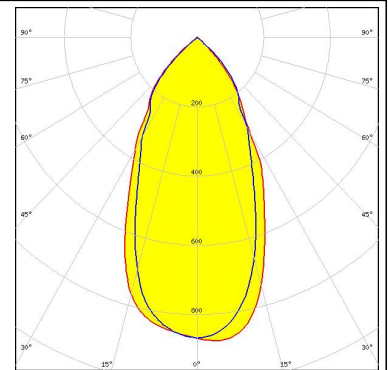


PHOTOMETRIC DATA (MEASURED):

LG Innotek

LED LG 5630
 FWHM 50.0°
 Efficiency 75 %
 Peak intensity 0.880 cd/lm
 LEDs/each optic 1
 Light colour White

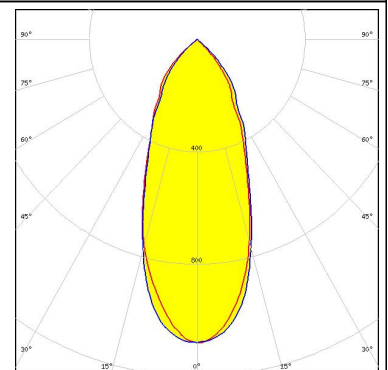
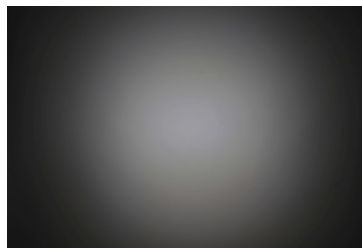
Required components:
 C15427_FLORENTINA-1-SHD-60



LUMILEDS

LED LUXEON 3030 2D (Round LES)
 FWHM 42.0°
 Efficiency 76 %
 Peak intensity 1.100 cd/lm
 LEDs/each optic 1
 Light colour White

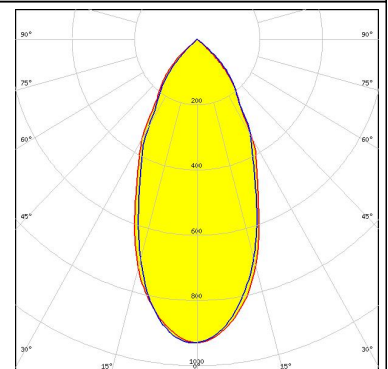
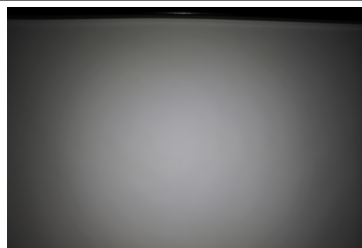
Required components:



LUMILEDS

LED LUXEON 5050
 FWHM 48.0°
 Efficiency 74 %
 Peak intensity 0.931 cd/lm
 LEDs/each optic 1
 Light colour White

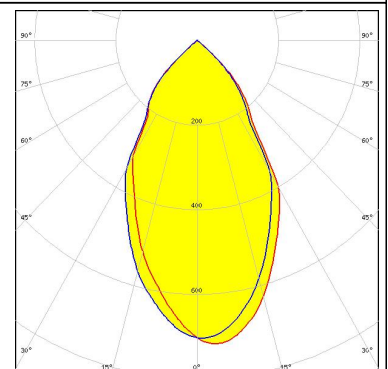
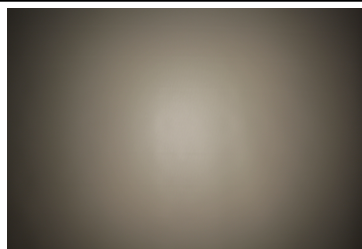
Required components:
 C15427_FLORENTINA-1-SHD-60



LUMILEDS

LED LUXEON M/MX
 FWHM 57.0°
 Efficiency 70 %
 Peak intensity 0.710 cd/lm
 LEDs/each optic 1
 Light colour White

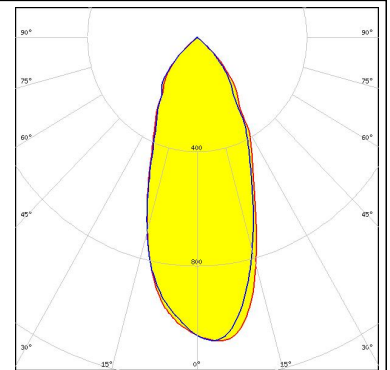
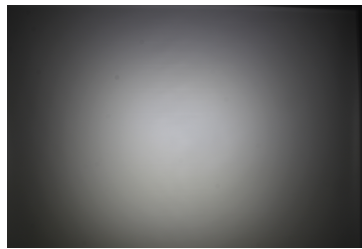
Required components:
 C15427_FLORENTINA-1-SHD-60



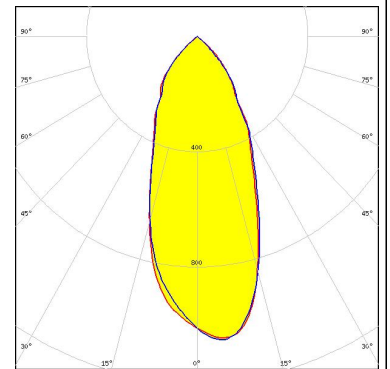
PHOTOMETRIC DATA (MEASURED):



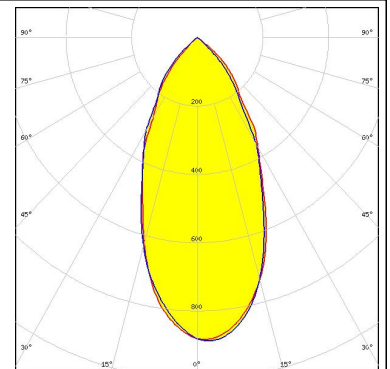
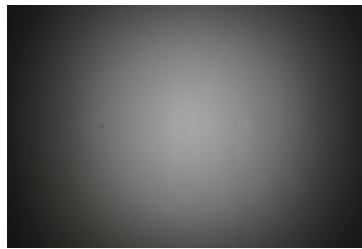
LED NF2x757G
FWHM 42.0°
Efficiency 76 %
Peak intensity 1.100 cd/lm
LEDs/each optic 1
Light colour White
Required components:
 C16701_FLORENTINA-1-SHD-60-WHT



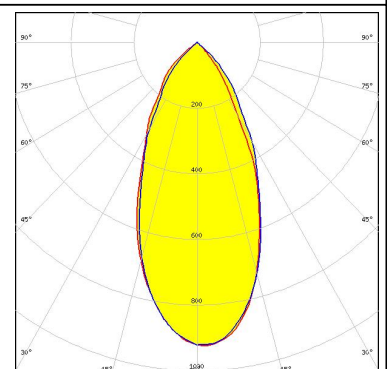
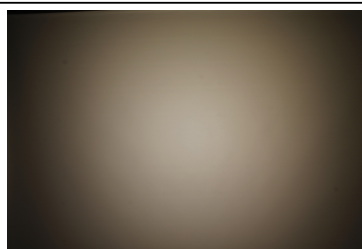
LED NF2x757G
FWHM 42.0°
Efficiency 76 %
Peak intensity 1.100 cd/lm
LEDs/each optic 1
Light colour White
Required components:
 C15427_FLORENTINA-1-SHD-60



LED NFMW48xA
FWHM 48.0°
Efficiency 71 %
Peak intensity 0.900 cd/lm
LEDs/each optic 1
Light colour White
Required components:
 C15427_FLORENTINA-1-SHD-60



LED Duris S10
FWHM 47.0°
Efficiency 71 %
Peak intensity 0.930 cd/lm
LEDs/each optic 1
Light colour White
Required components:
 C15427_FLORENTINA-1-SHD-60



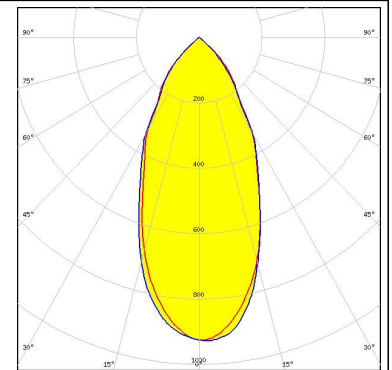
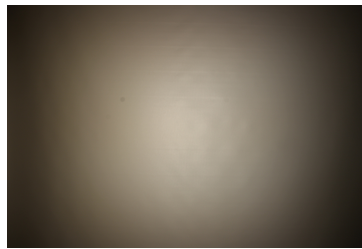
PHOTOMETRIC DATA (MEASURED):

OSRAM

Opto Semiconductors

LED Duris S8
 FWHM 47.0°
 Efficiency 73 %
 Peak intensity 0.929 cd/lm
 LEDs/each optic 1
 Light colour White
 Required components:

C15427_FLORENTINA-1-SHD-60

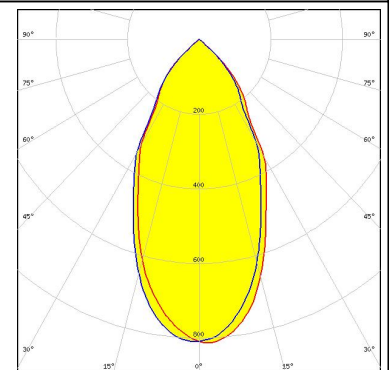
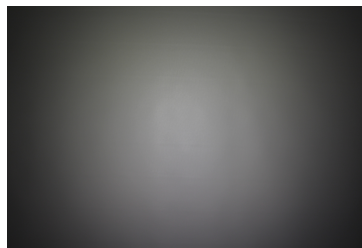


OSRAM

Opto Semiconductors

LED OSCONIQ P 7070
 FWHM 52.0°
 Efficiency 70 %
 Peak intensity 0.800 cd/lm
 LEDs/each optic 1
 Light colour White
 Required components:

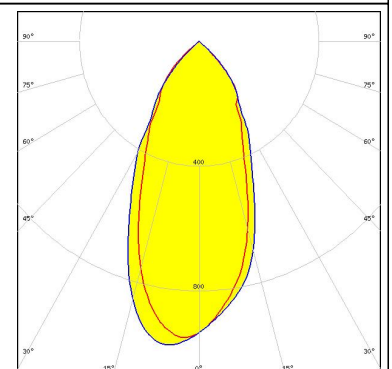
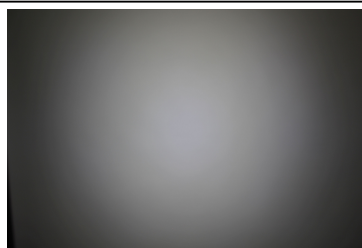
C15427_FLORENTINA-1-SHD-60



SAMSUNG

LED LM561B
 FWHM 46.0°
 Efficiency 75 %
 Peak intensity 1.000 cd/lm
 LEDs/each optic 1
 Light colour White
 Required components:

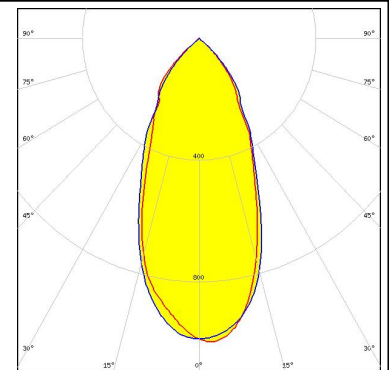
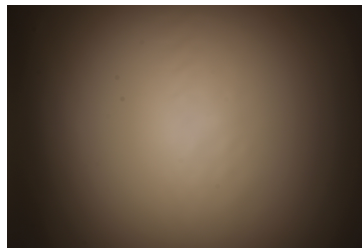
C15427_FLORENTINA-1-SHD-60



SEOUL SEMICONDUCTOR

LED SEOUL 5630
 FWHM 46.0°
 Efficiency 77 %
 Peak intensity 1.000 cd/lm
 LEDs/each optic 1
 Light colour White
 Required components:

C15427_FLORENTINA-1-SHD-60



GENERAL INFORMATION:

NOTE: The typical beam angle will be changed by different color, chip size and chip position tolerance. The typical total beam angle is the full angle measured where the luminous intensity is half of the peak value.

MATERIALS:

As part of our continuous research and improvement processes, and to ensure the best possible quality and availability of our products, LEDiL reserves the right to change material grades without notice.

PRODUCT DATA USER AGREEMENT AND DISCLAIMER:

The measured data in the provided downloadable LEDiL Product Datasheets and Mechanical 2D-Drawings is rounded and provided as reference for planning. LEDiL Oy's optical specifications have been verified by conducting performance testing of the products in accordance with the company's quality system. The reported data are averaged results of multiple measurements with typical variation. LEDiL Oy reserves the right to without prior notification make changes and improvements to its products.

LEDiL Oy assumes neither warranty, nor guarantee nor any other liability of any kind for the contents and correctness of the provided data. The provided data has been generated with highest diligence but the provided data may in reality not represent the complete possible variation range of all intrinsic parameters. Therefore, in certain cases a deviation from the provided data could occur.

LEDiL Oy reserves the right to undertake technical changes of its products without further notification which could lead to changes in the provided data. LEDiL Oy assumes no liability of any kind for the possible deviation from any provided data or any other damage resulting from the usage of the provided data.

The user agrees to this disclaimer and user agreement with the download or usage of the provided files.

LEDiL Oy

Joensuunkatu 13
FI-24240 SALO
Finland

LEDiL Inc.

228 West Page Street
Suite D
Sycamore IL 60178
USA

Local sales and technical support

[www.ledil.com/
where_to_buy](http://www.ledil.com/where_to_buy)

Shipping locations

Salo, Finland
Hong Kong, China

Distribution Partners

[www.ledil.com/
where_to_buy](http://www.ledil.com/where_to_buy)