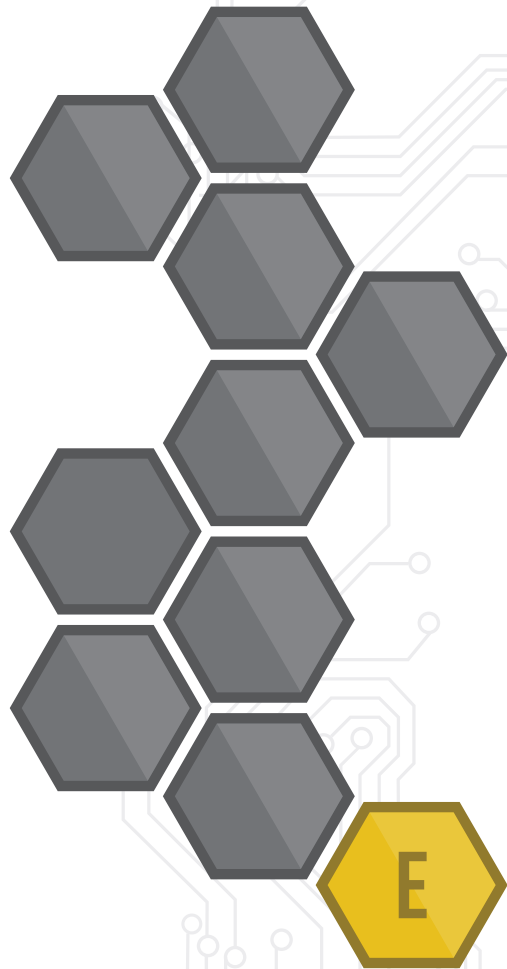


# Panasonic

## Electromechanical Line Card Catalog



800-344-2112 | [na.industrial.panasonic.com](http://na.industrial.panasonic.com) | [industrial@us.panasonic.com](mailto:industrial@us.panasonic.com)



# ELECTROMECHANICAL

[na.industrial.panasonic.com/products/electromechanical](http://na.industrial.panasonic.com/products/electromechanical)

**Light Touch Switches**

**Detector Switches**

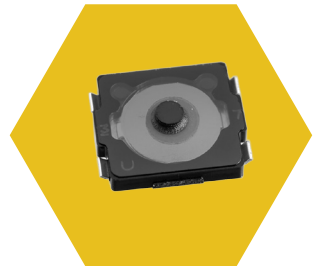
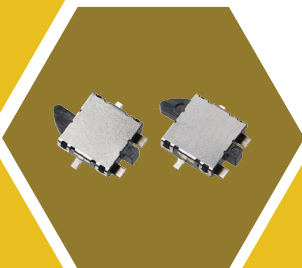
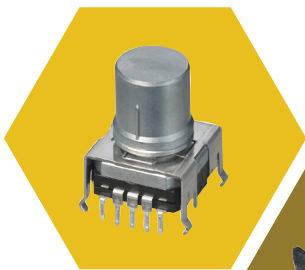
**Snap Action Switches**

**Interlock Switches**

**Operation Switches**

**Encoders**

**Potentiometers**



Series	L x W x H (mm)	Operating Force	Features
EVP-AY	3.4x2.9x1.7	1.6 N (160 gf) 2.4 N (240 gf)	<ul style="list-style-type: none"> <li>Built in Actuator</li> <li>IP67 Rated</li> </ul>
EVP-BB	2.6x1.6x0.53	1.6 N (160 gf)	<ul style="list-style-type: none"> <li>Smallest switch in lineup</li> <li>Laser Welded Design</li> <li>Built in Actuator</li> <li>IP67 Rated</li> </ul>
EVP-AF	3.0 x 2.6 x 0.65 3.0 x 2.6 x 0.70	1.6 N (160 gf) 2.4 N (240 gf) 3.4 N (340 gf)	<ul style="list-style-type: none"> <li>Built-in actuator for consistent tactile performance</li> </ul>
EVP-AA	3.5 x 2.9 x 1.7	1.0 N (100 gf) 1.6 N (160 gf) 2.4 N (240 gf) 3.5 N (350 gf) 5.0 N (500 gf)	<ul style="list-style-type: none"> <li>Super small-sized, thin profile</li> <li>J-bent terminal</li> <li>Wide range of operating force</li> <li>Long operating life</li> </ul>
EVQ-P6	4.1 x 4.1 x 0.35 4.1 x 4.1 x 0.43 4.1 x 4.1 x 0.58	1.0 N (100 gf) 1.6 N (160 gf) 2.4 N (240 gf)	<ul style="list-style-type: none"> <li>Compact/Thin Profile</li> <li>Long-life: up to 1,000,000 cycles min.</li> <li>Optional push-plate for improved actuation</li> <li>Optional ground terminal for ESD protection</li> </ul>
EVQ-PQ	4.5 x 4.5 x 0.55	1.6 N (160 gf) 2.4 N (240 gf)	<ul style="list-style-type: none"> <li>Thin Profile</li> <li>Sealing film for dust resistance</li> </ul>
EVQ-P2 EVQ-3P2 EVQ-P9	4.7 x 3.5 x 2.5 4.7 x 3.5 x 2.1	1.0 N (100 gf) 1.6 N (160 gf) 2.4 N (240 gf) 2.5 N (250 gf) 3.5 N (350 gf) 5.0 N (500 gf)	<ul style="list-style-type: none"> <li>J-bent terminals</li> <li>Ground terminal optional</li> <li>Middle Push: 0.7 mm</li> <li>Short Push: 0.25 mm</li> </ul>
EVQ-PL	4.9 x 4.9 x 0.8 4.9 x 4.9 x 1.5	1.0 N (100 gf) 1.6 N (160 gf) 2.6 N (260 gf)	<ul style="list-style-type: none"> <li>Optional push-plate for improved actuation</li> <li>GND terminal included</li> </ul>
EVQ-P0 EVQ-Q2	6.5 x 6.0 x 2.0 6.5 x 6.0 x 2.5 6.5 x 6.0 x 3.1	0.5 N (50 gf) 1.3 N (130 gf) 1.6 N (160 gf) 2.6 N (260 gf) 3.5 N (350 gf) 5.0 N (500 gf)	<ul style="list-style-type: none"> <li>Low cost</li> <li>Wide selection of height and force</li> <li>Wide push plate for reliable actuation</li> <li>Over-stroke &amp; GND type available</li> <li>Long operating life</li> </ul>
EVQ-PA EVQ-PB	6.0 x 6.0 x 4.3 6.0 x 6.0 x 5.0 6.0 x 6.0 x 7.0 6.0 x 6.0 x 9.5	1.0 N (100 gf) 1.3 N (130 gf) 1.6 N (160 gf) 2.6 N (260 gf)	<ul style="list-style-type: none"> <li>Without ground terminal (EVQ-PA)</li> <li>With ground terminal (EVQ-PB)</li> </ul>
EVQ-2	6.0 x 6.0 x 4.3 6.0 x 6.0 x 5.0 6.0 x 6.0 x 7.0 6.0 x 6.0 x 9.5	1.0 N (100 gf) 1.3 N (130 gf) 1.6 N (160 gf) 2.6 N (260 gf)	<ul style="list-style-type: none"> <li>With or without ground terminal</li> <li>Wide selection of height and force</li> </ul>
EVQ-PE/PN/5P	6.0 x 3.5 x 4.3 6.0 x 3.5 x 5.0	1.0 N (100 gf) 1.6 N (160 gf) 2.4 N (240 gf)	<ul style="list-style-type: none"> <li>Narrow width for space saving</li> <li>SMT, bulk, radial-tape terminal types available</li> </ul>
EVQ-11	6.0 mm dia. x 4.3 6.0 mm dia. x 5.0 6.0 mm dia. x 7.0 6.0 mm dia. x 9.5	1.0 N (100 gf) 1.3 N (130 gf) 1.6 N (160 gf) 2.6 N (260 gf)	<ul style="list-style-type: none"> <li>Radial Taping</li> <li>Forged terminals to improve mounting efficiency</li> <li>Round shape for improved packaging density</li> </ul>
EVQ-P0	6.2 x 6.2 x 7.45	0.74 N (74 gf) 1.3 N (130 gf)	<ul style="list-style-type: none"> <li>Knob shape: De-centering, centering</li> <li>Ideal for frequent usage such as mouse button</li> </ul>
EVQ-PV	6.1 x 6.0 x 5.0	1.6 N (160 gf) 2.0 N (200 gf) 2.2 N (220 gf) 2.5 N (250 gf) 3.5 N (350 gf)	<ul style="list-style-type: none"> <li>Push travel: 1.0 mm, 1.3 mm</li> <li>Forged terminals</li> <li>Large push plate for superior actuation</li> </ul>

Light Touch Switches

Top Push

		Series	L x W x H (mm)	Operating Force	Features
Light Touch Switches	Double Action	EVQ-3P EVQ-PR	6.0 x 6.0 x 0.9 6.0 x 6.0 x 0.95	1st 0.7 N, 2nd 2.6 N 1st 1.0 N, 2nd 2.6 N	<ul style="list-style-type: none"> <li>• Double action for camera shutter function</li> <li>• Push plate, Boss &amp; Ground as options</li> </ul>
	Side Operated	EVP-AK	3.8x1.9x1.6	1.6 N (160 gf)	<ul style="list-style-type: none"> <li>• Edge Mount Design</li> <li>• Laser Welded Design</li> <li>• IP67 Rated</li> </ul>
		EVQ-P7 EVQ-P3 EVQ-9P7	3.5 x 2.9 x 1.35	1.6 N (160 gf) 2.2 N (220 gf)	<ul style="list-style-type: none"> <li>• High impact resistance</li> <li>• Boss and L-terminal available</li> </ul>
	Side Operated, Half Drive	EVP-AN	3.5 x 2.9 x 1.2	1.6 N (160 gf) 2.2 N (220 gf)	<ul style="list-style-type: none"> <li>• High mounting strength</li> <li>• Allows for slim profile</li> </ul>
	Side Operated, Edge Mount	EVP-AE	4.5 x 2.25 x 2.9	1.6 N (160 gf)	<ul style="list-style-type: none"> <li>• Improved soldering strength in the operating direction</li> <li>• Long operational life</li> </ul>
	Double Action, Side Operated	EVP-AJ	4.7 x 3.5 x 1.2	1.6 N (160 gf) 2.6 N (260 gf)	<ul style="list-style-type: none"> <li>• With ground terminal</li> </ul>
	Side Operated	EVQ-PU	4.7 x 3.5 x 1.65	1.6 N (160 gf) 2.2 N (220 gf)	<ul style="list-style-type: none"> <li>• High impact resistance</li> <li>• Straight or J-bent terminals</li> </ul>
		EVQ-P4	6.2 x 2.55 x 3.5	1.0 N (100 gf) 1.6 N (160 gf) 2.4 N (240 gf) 2.5 N (250 gf) 3.5 N (350 gf) 5.0 N (500 gf)	<ul style="list-style-type: none"> <li>• Optional edge mount for ultra high impact resistance</li> <li>• 0.25 mm, 0.70 mm travel</li> <li>• Life: 200 K to 1 Million cycles</li> </ul>
		EVQ-PS	6.1 x 4.0 x 1.8	1.6 N (160 gf) 2.2 N (220 gf)	<ul style="list-style-type: none"> <li>• Straight or J-bent terminals</li> <li>• With or without positioning boss</li> </ul>
		EVQ-P1 EVQ-9P	6.1 x 6.0 x 5.0	1.6 N (160 gf) 2.0 N (200 gf) 2.2 N (220 gf) 2.5 N (250 gf) 3.0 N (300 gf) 3.5 N (350 gf)	<ul style="list-style-type: none"> <li>• Push travel: 1.0 mm, 1.3 mm</li> <li>• Popular for automotive applications</li> <li>• J-bent terminal</li> <li>• Large push plate for superior actuation</li> </ul>
	Long Travel	EVQ-Q1	8.5 x 8.5 x 6.5	4.0 N (400 gf) 5.0 N (500 gf)	<ul style="list-style-type: none"> <li>• Ultra high force</li> <li>• Popular for automotive applications</li> <li>• Large push plate for superior actuation</li> <li>• J-Bent Terminal</li> </ul>
	Center Space, Long Travel	EVP-AD	9.8 x 9.8 x 4.7	4.0 N (400 gf)	<ul style="list-style-type: none"> <li>• World's first open Center Space for LED</li> <li>• Long travel of 1.0mm</li> <li>• 100K life</li> </ul>
	Side Operated	EVQ-PC EVQ-PF	PC: 7.5 x 7.1 x 9.25 PF: 7.5 x 7.1 x 7.15 PF: 7.5 x 7.1 x 7.85 PF: 7.5 x 7.1 x 9.85 PF: 7.5 x 7.1 x 12.35	1.0 N (100 gf) 1.3 N (130 gf) 1.6 N (160 gf) 2.6 N (260 gf)	<ul style="list-style-type: none"> <li>• Without ground terminal</li> <li>• Bulk (EVQ-PF) or radial taping (EVQ-PC)</li> <li>• Wide selection of height and force</li> </ul>

		Series	Dimensions (mm)	Operating Force	Features
Detector Switches	Horizontal Detector	ESE-58	3.5 x 3.0 x 0.9	300 mN max (30 gf)	<ul style="list-style-type: none"> <li>• Industry's smallest form factor and thinnest profile</li> <li>• Normal close or normal open style</li> <li>• Positioning boss optional</li> <li>• Multiple actuation methods for design flexibility</li> </ul>
	1HW Detector	ESE-23	Mounting height: 1.4 mm  Outer dimensions: 5.0 mm x 4.15 mm	300 mN (30 gf)	<ul style="list-style-type: none"> <li>• Small/thin profile</li> <li>• Long over-travel</li> <li>• Usable as an operation switch (an input device)</li> </ul>
	2W Detector	ESE-24	7.5 mm x 5.6 mm x 3.0 mm 7.5 mm x 5.6 mm x 4.65 mm	350 mN (35 gf)	<ul style="list-style-type: none"> <li>• Compact/thin profile</li> <li>• Long over-travel</li> <li>• Usable as an operation switch (an input device)</li> </ul>
	Vertical Detector	ESE-16	3.35 x 2.2 x 1.5	250 mN max (25 gf)	<ul style="list-style-type: none"> <li>• Industry's smallest projected size</li> </ul>
	2 mm Size Type 2N	ESE-22	Vertical mounting height: 4.1 mm  Horizontal mounting height: 2.1 mm  Horizontal with frame height: 2.85 mm	300 mN (30 gf)	<ul style="list-style-type: none"> <li>• Wiping contact construction</li> <li>• Operable in two directions: X-X or Y-Y</li> <li>• Extremely thin profile, SMD</li> </ul>
	Super Thin	ESE-13 ESE-18	Mounting height: 1.2 mm	300 mN (30gf)	<ul style="list-style-type: none"> <li>• For horizontal and vertical mounting (ESE-13)</li> <li>• For left and right side operation (ESE-18)</li> </ul>
	Horizontal Thin	ESE-31	Mounting strength: 80 N  Switch body height: 1.7 mm	390 mN max.	<ul style="list-style-type: none"> <li>• Increased the contact reliability and lifespan.</li> <li>• Lifespan: 100,000 operations or more</li> </ul>

Snap Action Switches  
Non-Sealed (micro)

Series	Op. Force (gF max.)	Max. Contact Rating	Low Resistive Load Ratings	Expected Electrical Life	Contact Material	Ratings	Features
AEQ	1.2N (Pin plunger) 1.7N (Leaf lever) 1.5N (Simulated leaf lever)	100 µA at 3 VDC to 100 mA 30 VDC [Min. switching capacity 10 µA at 1 VDC]	10 µA at 1 VDC	2 × 10 <sup>5</sup> 3V DC 0.1mA	—	IP40	• Handles low level load 100 µA at 3 VDC to 100 mA 30 VDC
				10 <sup>5</sup> 30V DC 100mA			
AH1	0.74N 1.47N	1.47N 3 A 125 V AC 2 A 30 V DC  0.74N 1 A 125 V AC 1 A 30 V DC	Au-clad contact 5 mA 6 VDC 2 mA 12 VDC 1 mA 24 VDC	3 × 10 <sup>4</sup>	Standard: Ag alloy  Low-level: Au-clad Ag alloy	IP40  UL/CSA	• Ultra-miniature size (12.8 × 6 × 6.5 mm 12.7 × 6 × 6 mm) • Flux-resistant construction • Flat terminal
AM1	0.69N to 5.30N	10 A 125, 250 VAC or 1 A 480 VAC  1/8HP 125 VAC 1/4HP 250 VAC 1/2A 125 VDC 1/4A 250 VDC	—	5 × 10 <sup>5</sup>	Ag alloy	IP40  UL/C-UL	• Versatile range for all applications
AV3	1.47N	3 A 30 VAC	—	10 <sup>4</sup>	Ag alloy	IP40  UL/C-UL, ENEC/VDE	• Contact gap of greater than 1mm • Door inter-lock switch for OA equipment
AV4	0.98N	Ag contact: 0.5 A 30 VDC  Au contact: 0.1 A 30 VDC	—	2 × 10 <sup>4</sup>  (Au type: 2 × 10 <sup>3</sup> )	Standard: Ag alloy  Low-level: Au plating	IP40	• Super miniature size (7.5 × 2.5 × 5 mm) • Solder terminal type with mounting holes available • Mechanical life 3 × 10 <sup>5</sup>
AV6	0.50N 1.50N	0.1 A 30 VDC	—	2 × 10 <sup>5</sup>	Au-clad Ag alloy	IP40  UL/C-UL, TÜV	• Using a connector for connections significantly improves operation effectiveness • Contact reliability by using a simple dust prevention guard and gold-clad double layer contacts
AVT3 AVL3 AVM3	Standard: 0.25N  Gold-clad: 0.49N 0.98N  Long life version: 1.47N	Standard: 3 A 250 VAC 3 A 30 VDC 0.4 A 125 VDC  Long life version: 5 A 250 VAC 5 A 30 VDC 0.4 A 125 VDC  Au clad contact: 0.1 A 250 VAC  Triple layer: 0.1 A 30 VDC	Double layer: 1 to 100 mA, 5 to 30 VDC  Triple layer: 1 to 100 mA, 5 to 250 VAC	5 × 10 <sup>4</sup>	Standard: Ag alloy  Low-level: Au-clad triple layer, double layer	IP40  UL/C-UL, ENEC/VDE	• Consistent quality and high precision through sophisticated automatic fabrication system • Low-level circuit types available • Long life version available

		Series	Op. Force (gF max.)	Max. Contact Rating	Low Resistive Load Ratings	Expected Electrical Life	Contact Material	Ratings	Features
Snap Action Switches	Sealed (turquoise)	ASQ	1.5N (Pin plunger) 1.7N (Leaf lever) 1.5N (Simulated leaf lever)	100 mA 30 V DC	1 mA 5 VDC	2 × 10 <sup>5</sup> (Nominal)	Au-clad	IP67	<ul style="list-style-type: none"> <li>Compact size and ultra-long stroke</li> <li>IP67</li> <li>Silent operation</li> </ul>
						2 × 10 <sup>5</sup> (Low-level)			
		ASQM	1.2N (Pin Plunger) 1.5N(Simulated Roller)	50mA 16VDC	1mA 5VDC	1.5X10 <sup>5</sup> (nominal)	Au-Clad	1P67	<ul style="list-style-type: none"> <li>Miniaturization</li> <li>Contact pressure does not depend on the operation stroke</li> <li>High contact reliability</li> <li>High effective sealing for resistance against adverse environments</li> </ul>
						3x10 <sup>5</sup> (low level)			
ABJ	1.23N 1.96N 2.45N (Long stroke)	Ag Alloy Contact: 1.23N 1 A 125 VAC 1 A 30 VDC	5 mA 6 VDC 2 mA 12 VDC 1 mA 24 VDC	3 × 10 <sup>4</sup> (Ag alloy contact)	Standard: Ag alloy Low-level: Au-clad	IP67 UL/CSA	<ul style="list-style-type: none"> <li>Ultra-miniature size (12.8 × 6 × 6.5 mm)</li> <li>Adoption of elastomer double molding technology and Ultrasonic swaging technology to uniform sealing in high production quantities</li> <li>High environmental resistance (IP67)</li> </ul>		
		1.96N 2 A 125 VAC 2 A 30 VDC		105 (Au-clad contact)					
ABV1	0.98N 1.96N	2.45N (Long stroke) 1 A 125 VAC 1 A 30 VDC	5 mA 6 VDC 2 mA 12 VDC 1 mA 24 VDC	5 × 10 <sup>4</sup> (Ag alloy contact)	Standard: Ag alloy Low-level: Au-clad	IP67 UL/C-UL, ENEC/VDE	<ul style="list-style-type: none"> <li>Sub-miniature size (19.8 × 6.4 × 11.1 mm)</li> <li>Adoption of Elastomer double molding technology and Ultrasonic swaging technology to uniform sealing in high production quantities</li> <li>High environmental resistance (IP67)</li> </ul>		
		Au Clad Contact: 0.1 A 125 VAC 0.1 A 30 VDC						2 × 10 <sup>5</sup> (Au-clad contact)	
ABS	0.98N 1.47N	Ag Alloy Contact: 2 A 125 VAC 2 A 250 VAC 2 A 30 VDC 0.4 A 125 VDC	5 mA 6 VDC 2 mA 12 VDC 1 mA 24 VDC	2 × 10 <sup>5</sup> (Au-clad contact)	Standard: Ag alloy Low-level: Au-clad	IP67 UL/C-UL, ENEC/VDE	<ul style="list-style-type: none"> <li>Sub-miniature size (19.8 × 6.4 × 11.1 mm)</li> <li>Adoption of Elastomer double molding technology and Ultrasonic swaging technology to uniform sealing in high production quantities</li> <li>High environmental resistance (IP67)</li> </ul>		
		Au Clad Contact: (triple, double layer) 0.1 A 125 VAC 0.1 A 250 VAC 0.1 A 30 VDC							
ABV1	0.98N 1.96N	Ag Alloy Contact: 5 A 250 VAC (O.F. min. 1.96N) 3 A 250 VAC (O.F. 0.98N)	5 mA 6 VDC 2 mA 12 VDC 1 mA 24 VDC	105 (Nominal)	Standard: Ag alloy Low-level: Au-clad	IP67 UL/C-UL, ENEC/VDE	<ul style="list-style-type: none"> <li>Miniature size (33 × 10.3 × 15.9 mm)</li> <li>Adoption of Ultrasonic swaging technology and epoxy sealing to uniform sealing in high production quantities</li> <li>High environmental resistance (IP67)</li> </ul>		
		Au Clad Contact: 3 A 250 VAC (O.F. min. 1.96N) 1 A 250 VAC (O.F. 0.98N)		106 (Low-level)					

	Series	Op. Force (gF max.)	Max. Contact Rating	Expected Electrical Life	Contact Material	Ratings	Features
Interlock Switches	AGX	<Standard> 1 Form A: 3.92N 2 Form A: 3.92N 3 Form A: 5.88N  High capacity: 1 Form A: 4.90N 2 Form A and 3 Form A: 5.88N	Standard: 10.1 A 250 V AC	1 × 10 <sup>5</sup>	Ag alloy	IP40 UL/C-UL, ENEC/VDE	<ul style="list-style-type: none"> <li>• Snap-in mounting</li> <li>• 14 mm depth</li> <li>• Contact gap of greater than 4 mm</li> </ul>
	AV1	1 Form A: 4.90N 1 Form B: 2.94N 1 Form A 1 Form B: 5.88N 2 Form A: 7.85N 3 Form A: 9.81N	10.1 A 250 V AC	5 × 10 <sup>4</sup>	Ag alloy	IP40 UL/C-UL, ENEC/VDE	<ul style="list-style-type: none"> <li>• Dual restoration spring mechanism</li> <li>• Insulation distance 8 mm (snap-in mounting 2 form A and 3 form A)</li> </ul>

		Series	Contact Arrangement	Contact Rating	Op. Force	Load	Mounting Method	Features
Operation Switches	Power Rocker Switches	AJ7	1a, 2a	10A (Resistive) 4A (Motor load) 250VAC	2.2N - 4N	10A 250V AC 6A 250V AC	Snap-in, Square hole 12.9 x 19.4 mm  (Panel thickness 1.25 to 2.0 mm)	<ul style="list-style-type: none"> <li>• 0.187 quick-connect</li> <li>• Soldering</li> <li>• PC board</li> <li>• Right and left angle terminals</li> </ul>
				TV Rating 5/78A 120VAC 10A (Resistive) 4A (Motor load) 100A (Capacitor) 250VAC				
		AJ8	1a, 2a	16A (Resistive) 4A (Motor load) 250VAC	2.45N - 4.5N	16A 250V AC	Snap-in, Square hole 12.9 x 19.4 mm  (Panel thickness 1.25 to 2.0 mm)	<ul style="list-style-type: none"> <li>• 0.250 quick-connect</li> <li>• Soldering</li> <li>• PC board</li> <li>• Right and left angle terminals</li> </ul>
				TV Rating 8/117A 120VAC 16A (Resistive) 4A (Motor load) 160A (Capacitor) 250VAC				
		AJ8 (Trip Function Upgrade)	1a, 1c, 2a	16A (Resistive) 125 VAC  10A (Resistive) 4A (Motor load) 250 VAC	4.9N (or less)  6.86N (After reset)	16A 125V AC 10A 250V AC	Snap-in, Square hole 22 x 31.1 mm  (Panel thickness 1.8 to 2.3 mm)	<ul style="list-style-type: none"> <li>• Electromagnetic reset function</li> <li>• Comfortable operation</li> <li>• CT terminals adopted for coil terminals</li> <li>• Long life</li> <li>• Ability to withstand inrush current</li> </ul>
		AJ8S	3a	16A (Resistive) 4A (Motor load) 250 VAC  10mA 5 VDC	4.9N (or less)	Power section: 16A 250V AC  Signal section: 10mA 5V DC	Snap-in, Square hole 22 x 31.1 mm  (Panel thickness 1.8 to 2.3 mm)	<ul style="list-style-type: none"> <li>• Incorporates a contact for low level circuit protection</li> <li>• High inrush current resistance</li> <li>• Light touch Operation</li> <li>• Cadmium-free contact compatibility</li> </ul>

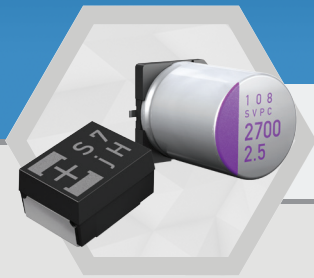


		Series	Life (cycles)	Rotation Torque	Features
Encoders	18mm Square Waterproof	EVQ-V9	30,000	50 mN·m	<ul style="list-style-type: none"> <li>• Water resistant</li> <li>• Highly responsive click sound and feel</li> <li>• High precision and reliability</li> </ul>
	11 mm Square GS Encoders	EVE-V EVE-Y	30,000	3 to 20 mN·m	<ul style="list-style-type: none"> <li>• Low Profile</li> <li>• Reflow Type 3.5mm Body Height</li> <li>• Through-Hole Type 4mm Body Height</li> <li>• Integrated Push Switch 0.4mm or 1.5mm Travel</li> <li>• Minimum-Wobble Type Available</li> </ul>
	16 mm Square High Grade	EVE-P	1,000,000	3 to 25 mN·m	<ul style="list-style-type: none"> <li>• Smooth operating feel with minimal wobble</li> <li>• Integrated Switch</li> <li>• Long Life: 1,000,000 cycles minimum</li> </ul>
	Center Space 20/12mm, 27/18mm, 60/40mm	EVQ-V/W	30,000	3 to 20 mN·m 35 mN·m	<ul style="list-style-type: none"> <li>• Open center space for LED and switch</li> <li>• Allows for large knob design</li> <li>• Allows for transparent shaft for superior lighting effect</li> </ul>

		Series	Life (cycles)	Rotation Torque	Features
Potentiometers	9mm Rotary	EVU-E/F	10,000	1 to 20 mN·m	<ul style="list-style-type: none"> <li>• Multiple Bushing &amp; Height Configurations</li> <li>• Midpoint detent optional</li> </ul>
	12mm Dual Rotary	EVJ-C/Y	15,000	2 to 20 mN·m	<ul style="list-style-type: none"> <li>• Dual output with accurate tracking</li> </ul>
	10mm Sensor	EVW-AE	1,000,000	3 mN·m max.	<ul style="list-style-type: none"> <li>• Low profile, small size, long life</li> <li>• &lt;3% linearity</li> </ul>
	Center Space 39/20mm	EWV-YE/YG/YJ/YK	30,000	20 mN·m	<ul style="list-style-type: none"> <li>• Large center space for switch and LED</li> <li>• Low wobble of 0.25mm max</li> <li>• Multiple detent options (5, 8, 29)</li> <li>• Automotive grade</li> <li>• With built-in LED option</li> </ul>

# Over 65,000 Part Numbers Are Just a Click Away

Visit the NEW Panasonic Website Today at:  
[na.industrial.panasonic.com](http://na.industrial.panasonic.com)



Quickly and Easily Search Product Details

Discover The Latest Panasonic Products



Easily Find Inventory By Part Number

Locate Distributors & Get Support



## Panasonic



[industrial@us.panasonic.com](mailto:industrial@us.panasonic.com) | 1-800-344-2112



# Panasonic

Panasonic Industrial Devices Sales Company of America  
Two Riverfront Plaza, 7th Floor, Newark, NJ 07102

800-344-2112 | [na.industrial.panasonic.com](http://na.industrial.panasonic.com) | [industrial@us.panasonic.com](mailto:industrial@us.panasonic.com)