

NOTES:

1. PRESS FIT LEGS, 0.090 INCHES LONG.
1.57 [0.062] MINIMUM PCB THICKNESS.
2. SINGLE SIDED BOARD THICKNESS
NOMINAL: 1.60 [0.062"]
MINIMUM: 1.44 [0.057"]
BELLY TO BELLY BOARD THICKNESS
NOMINAL: 2.30 [0.090"]
MINIMUM: 2.07 [0.081"]
3. CAN BE USED WITH THE FOLLOWING LIGHT PIPE NUMBERS:

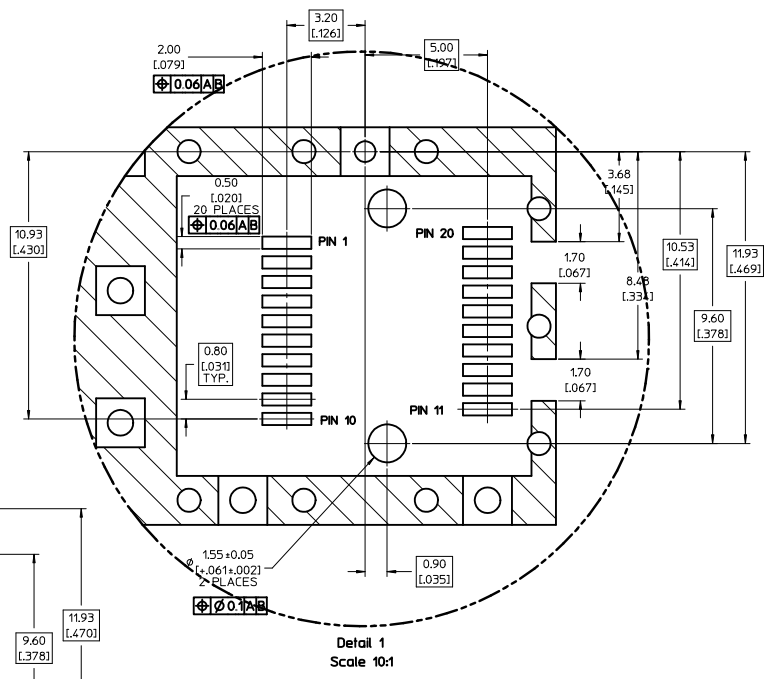
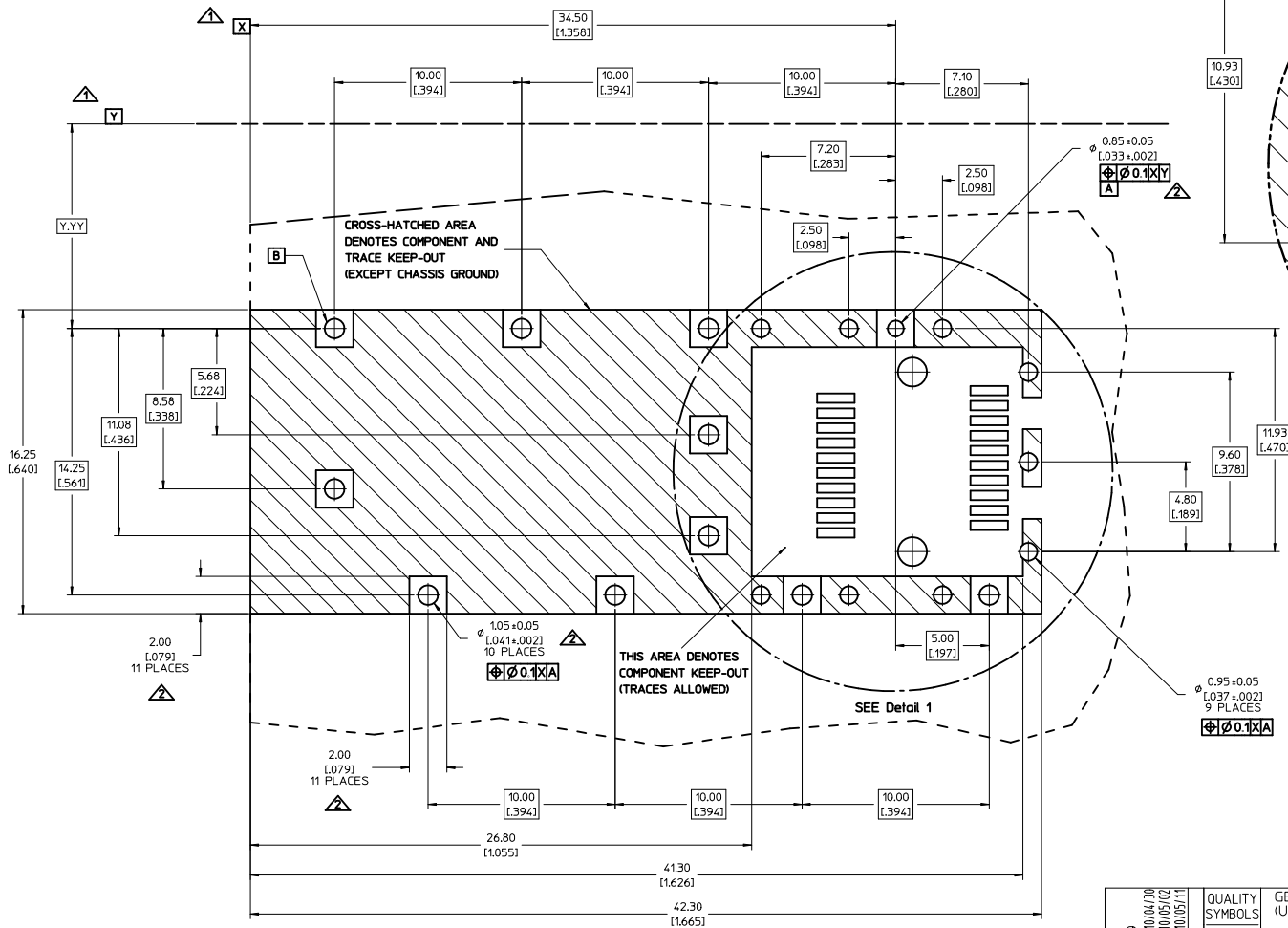
747260001 - LIGHT PIPE FROM BACK TO TOP
(REFER TO DOCUMENT SD-74726-001)

747260002 - LIGHT PIPE FROM SIDE TO TOP
(REFER TO DOCUMENT SD-74726-002)
4. MATERIAL: COPPER ALLOY
PLATING: PRE-PLATED WITH NICKEL
5. THIS PART MEETS THE RESTRICTION OF HAZARDOUS SUBSTANCES IN ELECTRICAL AND ELECTRONIC EQUIPMENT (RoHS) DIRECTIVE (2002/95/EC).

INITIAL RELEASE IEC NO. USY2010-0519 DRAWN BY: MMCKERVEY 2010/04/30 CHECKED BY: CHYDARI INKE 2010/05/02 APPROVED BY: KJANOTA 2010/05/11 APPR: KJANOTA 2010/05/11	QUALITY SYMBOLS ▽=0 ▽=0	GENERAL TOLERANCES (UNLESS SPECIFIED) <table border="1"> <tr> <th></th> <th>mm</th> <th>INCH</th> </tr> <tr> <td>4 PLACES</td> <td>±---</td> <td>±---</td> </tr> <tr> <td>3 PLACES</td> <td>±---</td> <td>±.005</td> </tr> <tr> <td>2 PLACES</td> <td>±0.13</td> <td>±.01</td> </tr> <tr> <td>1 PLACE</td> <td>±0.25</td> <td>±---</td> </tr> <tr> <td colspan="3">ANGULAR ± 1°</td> </tr> </table>		mm	INCH	4 PLACES	±---	±---	3 PLACES	±---	±.005	2 PLACES	±0.13	±.01	1 PLACE	±0.25	±---	ANGULAR ± 1°			DIMENSION STYLE MM/IN	SCALE 5:1	DESIGN UNITS METRIC	THIRD ANGLE PROJECTION
		mm	INCH																					
	4 PLACES	±---	±---																					
	3 PLACES	±---	±.005																					
2 PLACES	±0.13	±.01																						
1 PLACE	±0.25	±---																						
ANGULAR ± 1°																								
			DRAWN BY: MMCKERVEY 2010/04/30 CHECKED BY: ARI INKE 2010/05/02 APPROVED BY: KJANOTA 2010/05/11	DATE: 2010/04/30 DATE: 2010/05/02 DATE: 2010/05/11	TITLE SFP ONE PIECE CAGE 0.090 PRESS-FIT PINS BELLY TO BELLY																			
		DRAFT WHERE APPLICABLE MUST REMAIN WITHIN DIMENSIONS	MATERIAL NO. 747370035	DOCUMENT NO. SD-74737-035	MOLEX INCORPORATED	SHEET NO. 1 OF 4																		
			THIS DRAWING CONTAINS INFORMATION THAT IS PROPRIETARY TO MOLEX INCORPORATED AND SHOULD NOT BE USED WITHOUT WRITTEN PERMISSION																					

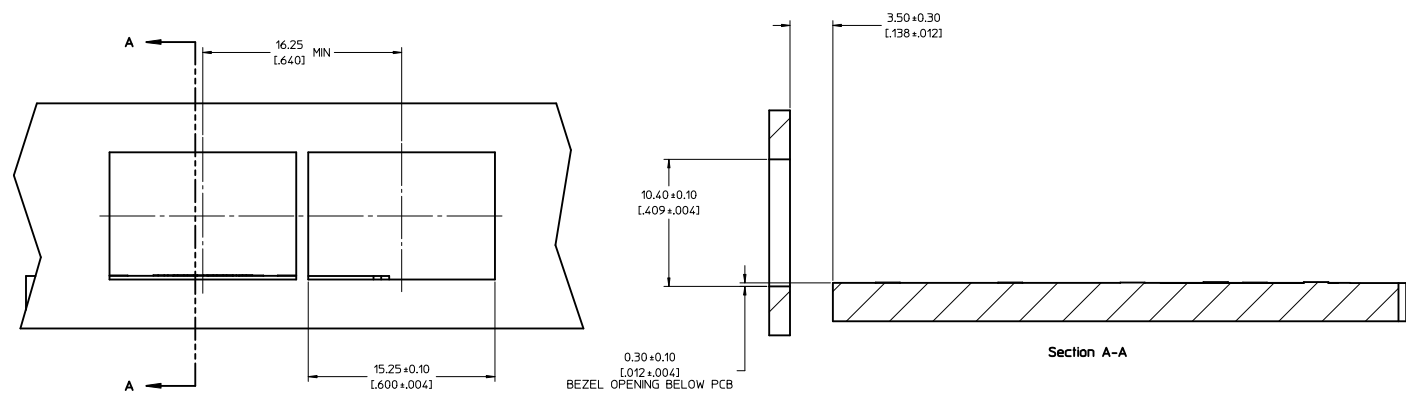
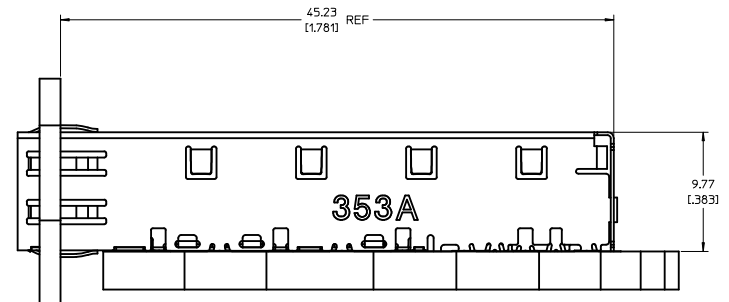
NOTES:

1. DATUM AND BASIC DIMENSIONS ESTABLISHED BY CUSTOMER.
2. PADS AND VIAS ARE CHASSIS GROUND.
3. PCB LAYOUT FOR SINGLE SIDED APPLICATIONS. BELLY TO BELLY MOUNTING REQUIRES LAYOUT MIRRORED ON OPPOSITE SIDE OF BOARD.
4. CONNECTOR PAD LAYOUT PER SFP MSA. WILL ACCOMMODATE MOLEX CONNECTOR SERIES 74441 OR EQUIVALENT



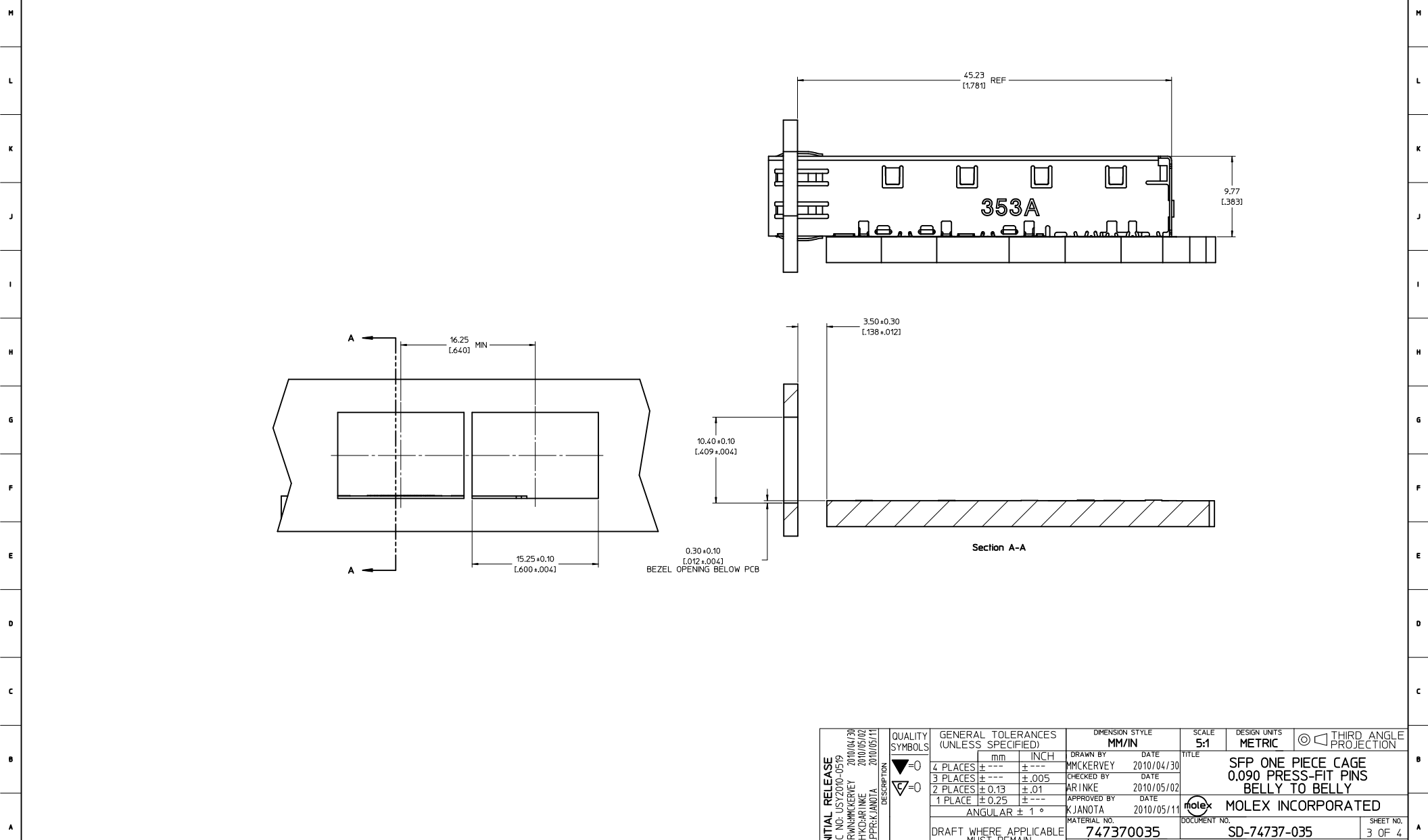
INITIAL RELEASE IEC NO. USY2010-0519 DRAWN BY MMCKERVEY 2010/04/30 CHECKED BY CHYDARIKKE 2010/05/02 APPROVED BY APPR:K.JANOTA 2010/05/11 REV DESCRIPTION	QUALITY SYMBOLS ▽=0 ▽=0		GENERAL TOLERANCES (UNLESS SPECIFIED) <table border="1"> <thead> <tr> <th></th> <th>mm</th> <th>INCH</th> </tr> </thead> <tbody> <tr> <td>4 PLACES</td> <td>± 0.10</td> <td>± 0.004</td> </tr> <tr> <td>3 PLACES</td> <td>± 0.15</td> <td>± 0.005</td> </tr> <tr> <td>2 PLACES</td> <td>± 0.20</td> <td>± 0.01</td> </tr> <tr> <td>1 PLACE</td> <td>± 0.25</td> <td>± 0.01</td> </tr> </tbody> </table> ANGULAR ± 1°			mm	INCH	4 PLACES	± 0.10	± 0.004	3 PLACES	± 0.15	± 0.005	2 PLACES	± 0.20	± 0.01	1 PLACE	± 0.25	± 0.01	DIMENSION STYLE MM/IN SCALE 8:1 DESIGN UNITS METRIC THIRD ANGLE PROJECTION	
		mm	INCH																		
	4 PLACES	± 0.10	± 0.004																		
	3 PLACES	± 0.15	± 0.005																		
2 PLACES	± 0.20	± 0.01																			
1 PLACE	± 0.25	± 0.01																			
DRAFT WHERE APPLICABLE MUST REMAIN WITHIN DIMENSIONS		DRAWN BY DATE MMCKERVEY 2010/04/30 CHECKED BY DATE ARI NKE 2010/05/02 APPROVED BY DATE K.JANOTA 2010/05/11		TITLE SFP ONE PIECE CAGE 0.090 PRESS-FIT PINS BELLY TO BELLY																	
		MATERIAL NO. 747370035		DOCUMENT NO. SD-74737-035																	
		SIZE D		SHEET NO. 2 OF 4																	

20 19 18 17 16 15 14 13 12 11 10 9 8 7 6 5 4 3 2 1



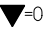
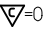

INITIAL RELEASE IEC NO. USY2010-0519 DRAWN: MMCKERVEY 2010/04/30 CHECKED: CHYDARI INKE 2010/05/02 APPR: K. JANOTA 2010/05/11	QUALITY SYMBOLS ▽=0 ▽=0	GENERAL TOLERANCES (UNLESS SPECIFIED)		DIMENSION STYLE MM/IN	SCALE 5:1	DESIGN UNITS METRIC	THIRD ANGLE PROJECTION	
		4 PLACES ± --- ± --- 3 PLACES ± --- ± .005 2 PLACES ± 0.13 ± .01 1 PLACE ± 0.25 ± --- ANGULAR ± 1°	mm INCH	DRAWN BY DATE MMCKERVEY 2010/04/30	CHECKED BY DATE ARI INKE 2010/05/02	TITLE SFP ONE PIECE CAGE 0,090 PRESS-FIT PINS BELLY TO BELLY		
		DRAFT WHERE APPLICABLE MUST REMAIN WITHIN DIMENSIONS	APPROVED BY DATE K.JANOTA 2010/05/11	MATERIAL NO. 747370035	DOCUMENT NO. SD-74737-035	MOLEX INCORPORATED		
			SIZE D	THIS DRAWING CONTAINS INFORMATION THAT IS PROPRIETARY TO MOLEX INCORPORATED AND SHOULD NOT BE USED WITHOUT WRITTEN PERMISSION				

19 18 17 16 15 14 13 12 11 10 9 8 7 6 5 4 3 2 1

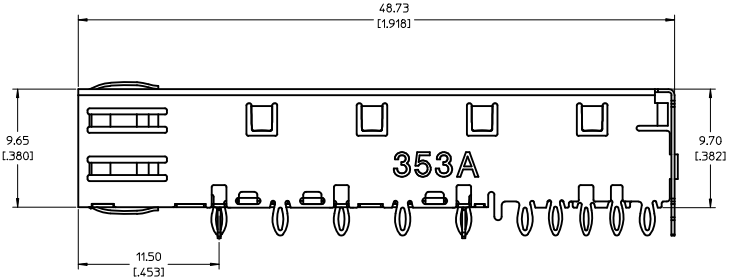
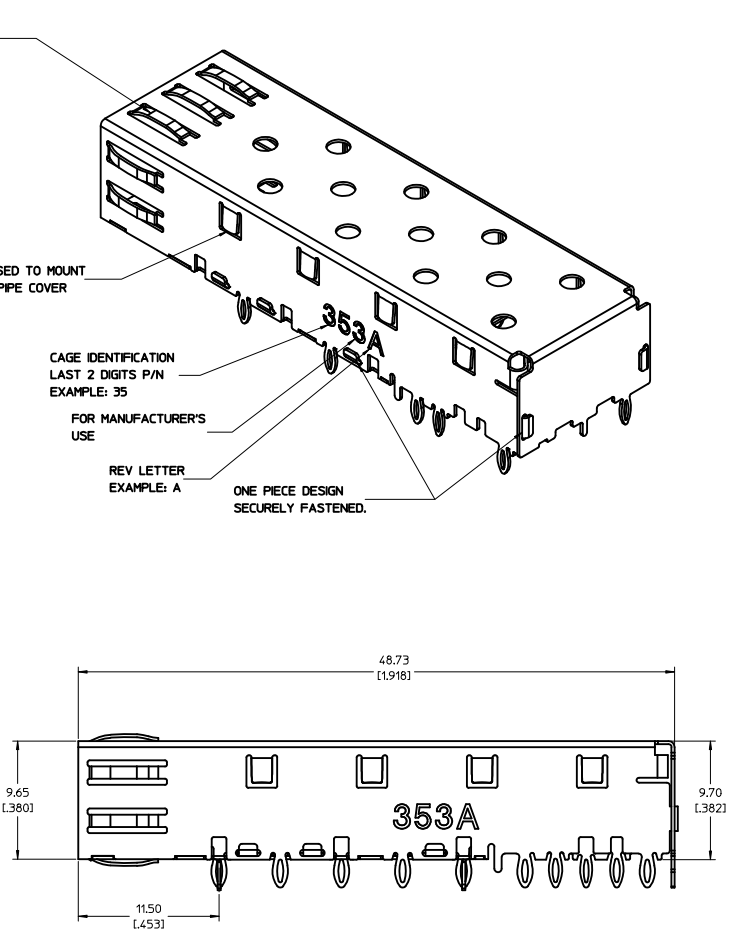
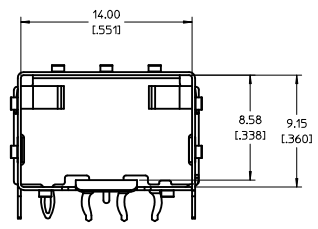
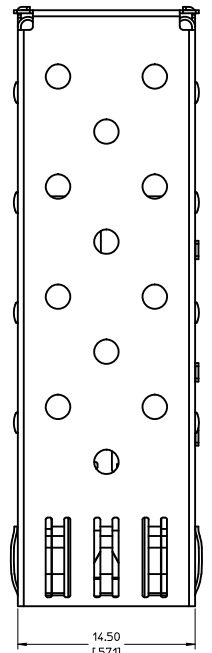
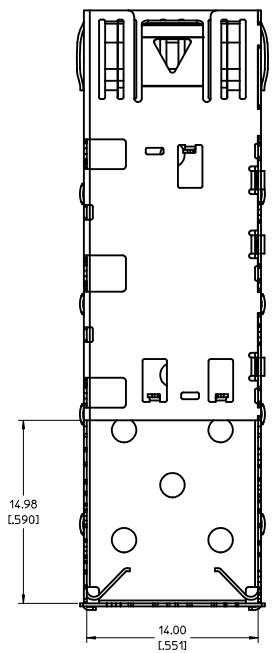


20 19 18 17 16 15 14 13 12 11 10 9 8 7 6 5 4 3 2 1

DATE	REV	CHANGES
2010/05/04	A	INITIAL RELEASE.

INITIAL RELEASE IEC NO. USY2010-0519 DRAWN: MMCKERVEY 2010/04/30 CHECKED: ARI INKE 2010/05/02 APPR: KJANOTA 2010/05/11	QUALITY SYMBOLS  = 0  = 0	GENERAL TOLERANCES (UNLESS SPECIFIED)		DIMENSION STYLE MM/IN	SCALE 5:1	DESIGN UNITS METRIC	THIRD ANGLE PROJECTION 		
		4 PLACES ± --- ± --- 3 PLACES ± --- ± .005 2 PLACES ± 0.13 ± .01 1 PLACE ± 0.25 ± ---	mm INCH	DRAWN BY MMCKERVEY	DATE 2010/04/30	TITLE SFP ONE PIECE CAGE 0,090 PRESS-FIT PINS BELLY TO BELLY			
		ANGULAR ± 1 °		CHECKED BY ARI INKE	DATE 2010/05/02	APPROVED BY KJANOTA			
		DRAFT WHERE APPLICABLE MUST REMAIN WITHIN DIMENSIONS		MATERIAL NO. 747370035	DATE 2010/05/11	MOLEX INCORPORATED		DOCUMENT NO. SD-74737-035	SHEET NO. 4 OF 4

19 18 17 16 15 14 13 12 11 10 9 8 7 6 5 4 3 2 1



NOTES:

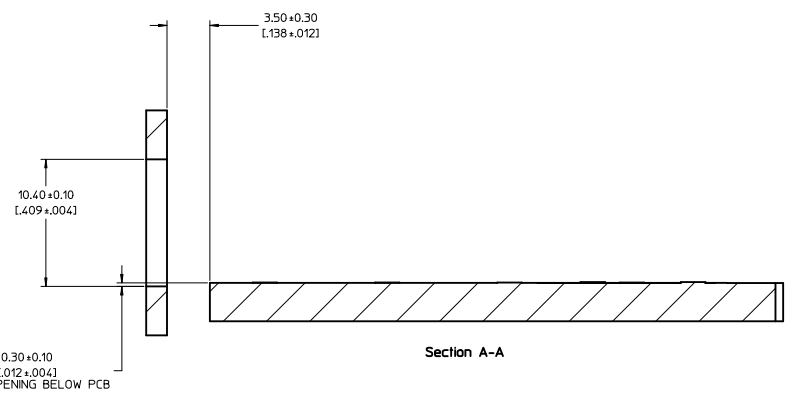
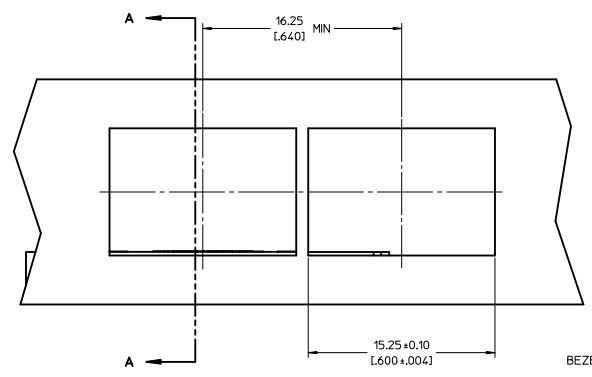
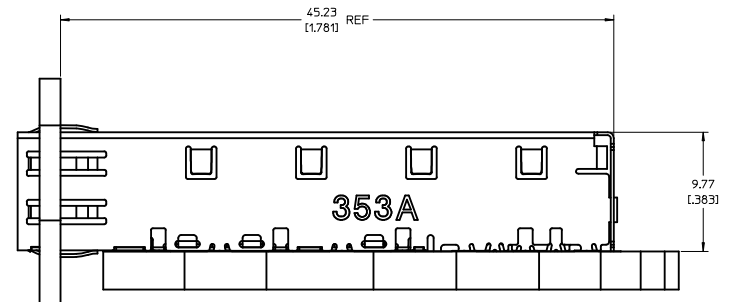
1. PRESS FIT LEGS, 0.090 INCHES LONG.
1.57 [0.062] MINIMUM PCB THICKNESS.
2. SINGLE SIDED BOARD THICKNESS
NOMINAL: 1.60 [0.062"]
MINIMUM: 1.44 [0.057"]
BELLY TO BELLY BOARD THICKNESS
NOMINAL: 2.30 [0.090"]
MINIMUM: 2.07 [0.081"]
3. CAN BE USED WITH THE FOLLOWING LIGHT PIPE NUMBERS:

747260001 - LIGHT PIPE FROM BACK TO TOP
(REFER TO DOCUMENT SD-74726-001)

747260002 - LIGHT PIPE FROM SIDE TO TOP
(REFER TO DOCUMENT SD-74726-002)
4. MATERIAL: COPPER ALLOY
PLATING: PRE-PLATED WITH NICKEL
5. THIS PART MEETS THE RESTRICTION OF HAZARDOUS SUBSTANCES IN ELECTRICAL AND ELECTRONIC EQUIPMENT (RoHS) DIRECTIVE (2002/95/EC).

INITIAL RELEASE IEC NO. USY2010-0519 DRAWN BY: MMCKERVEY 2010/04/30 CHECKED BY: CHYDARI INKE 2010/05/02 APPROVED BY: KJANOTA 2010/05/11	QUALITY SYMBOLS ▽=0 ▽=0	GENERAL TOLERANCES (UNLESS SPECIFIED)		DIMENSION STYLE MM/IN	SCALE 5:1	DESIGN UNITS METRIC	THIRD ANGLE PROJECTION	
		4 PLACES ± --- ± --- 3 PLACES ± --- ± .005 2 PLACES ± 0.13 ± .01 1 PLACE ± 0.25 ± ---	mm INCH	DRAWN BY: MMCKERVEY 2010/04/30 CHECKED BY: ARI INKE 2010/05/02 APPROVED BY: KJANOTA 2010/05/11	DATE: 2010/04/30 DATE: 2010/05/02 DATE: 2010/05/11	TITLE SFP ONE PIECE CAGE 0.090 PRESS-FIT PINS BELLY TO BELLY	MOLEX INCORPORATED	SHEET NO. 1 OF 4
		DRAFT WHERE APPLICABLE MUST REMAIN WITHIN DIMENSIONS		WATERL. NO. 747370035	DOCUMENT NO. SD-74737-035	MOLEX INCORPORATED		
		THIS DRAWING CONTAINS INFORMATION THAT IS PROPRIETARY TO MOLEX INCORPORATED AND SHOULD NOT BE USED WITHOUT WRITTEN PERMISSION						

20 19 18 17 16 15 14 13 12 11 10 9 8 7 6 5 4 3 2 1

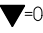
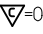



INITIAL RELEASE IEC NO. USY2010-0519 DRAWN: MMCKERVEY 2010/04/30 CHECKED: CHYDARI INKE 2010/05/02 APPR: K. JANOTA 2010/05/11	QUALITY SYMBOLS ▽=0 ▽=0	GENERAL TOLERANCES (UNLESS SPECIFIED)		DIMENSION STYLE MM/IN	SCALE 5:1	DESIGN UNITS METRIC	THIRD ANGLE PROJECTION		
		4 PLACES ± --- ± --- 3 PLACES ± --- ± .005 2 PLACES ± 0.13 ± .01 1 PLACE ± 0.25 ± ---	mm INCH	DRAWN BY MMCKERVEY	DATE 2010/04/30	TITLE SFP ONE PIECE CAGE 0,090 PRESS-FIT PINS BELLY TO BELLY			
		ANGULAR ± 1°	DRAFT WHERE APPLICABLE MUST REMAIN WITHIN DIMENSIONS	CHECKED BY ARI INKE	DATE 2010/05/02	MOLEX INCORPORATED			
		APPROVED BY K. JANOTA	DATE 2010/05/11	MATERIAL NO. 747370035	DOCUMENT NO. SD-74737-035	SHEET NO. 3 OF 4			

19 18 17 16 15 14 13 12 11 10 9 8 7 6 5 4 3 2 1

20 19 18 17 16 15 14 13 12 11 10 9 8 7 6 5 4 3 2 1

DATE	REV	CHANGES
2010/05/04	A	INITIAL RELEASE.

INITIAL RELEASE IEC NO. USY2010-0519 DRAWN: MCKERVEY 2010/04/30 CHECKED BY: ARI INKE 2010/05/02 APPROVED BY: K JANOTA 2010/05/11	QUALITY SYMBOLS  = 0  = 0	GENERAL TOLERANCES (UNLESS SPECIFIED)		DIMENSION STYLE MM/IN	SCALE 5:1	DESIGN UNITS METRIC	 THIRD ANGLE PROJECTION
		4 PLACES ± --- ± --- 3 PLACES ± --- ± .005 2 PLACES ± 0.13 ± .01 1 PLACE ± 0.25 ± --- ANGULAR ± 1 °	DRAWN BY DATE MCKERVEY 2010/04/30 CHECKED BY DATE ARI INKE 2010/05/02 APPROVED BY DATE K JANOTA 2010/05/11	TITLE SFP ONE PIECE CAGE 0,090 PRESS-FIT PINS BELLY TO BELLY			
		DRAFT WHERE APPLICABLE MUST REMAIN WITHIN DIMENSIONS	MATERIAL NO. 747370035	DOCUMENT NO. SD-74737-035	SHEET NO. 4 OF 4		
		THIS DRAWING CONTAINS INFORMATION THAT IS PROPRIETARY TO MOLEX INCORPORATED AND SHOULD NOT BE USED WITHOUT WRITTEN PERMISSION					

19 18 17 16 15 14 13 12 11 10 9 8 7 6 5 4 3 2 1