

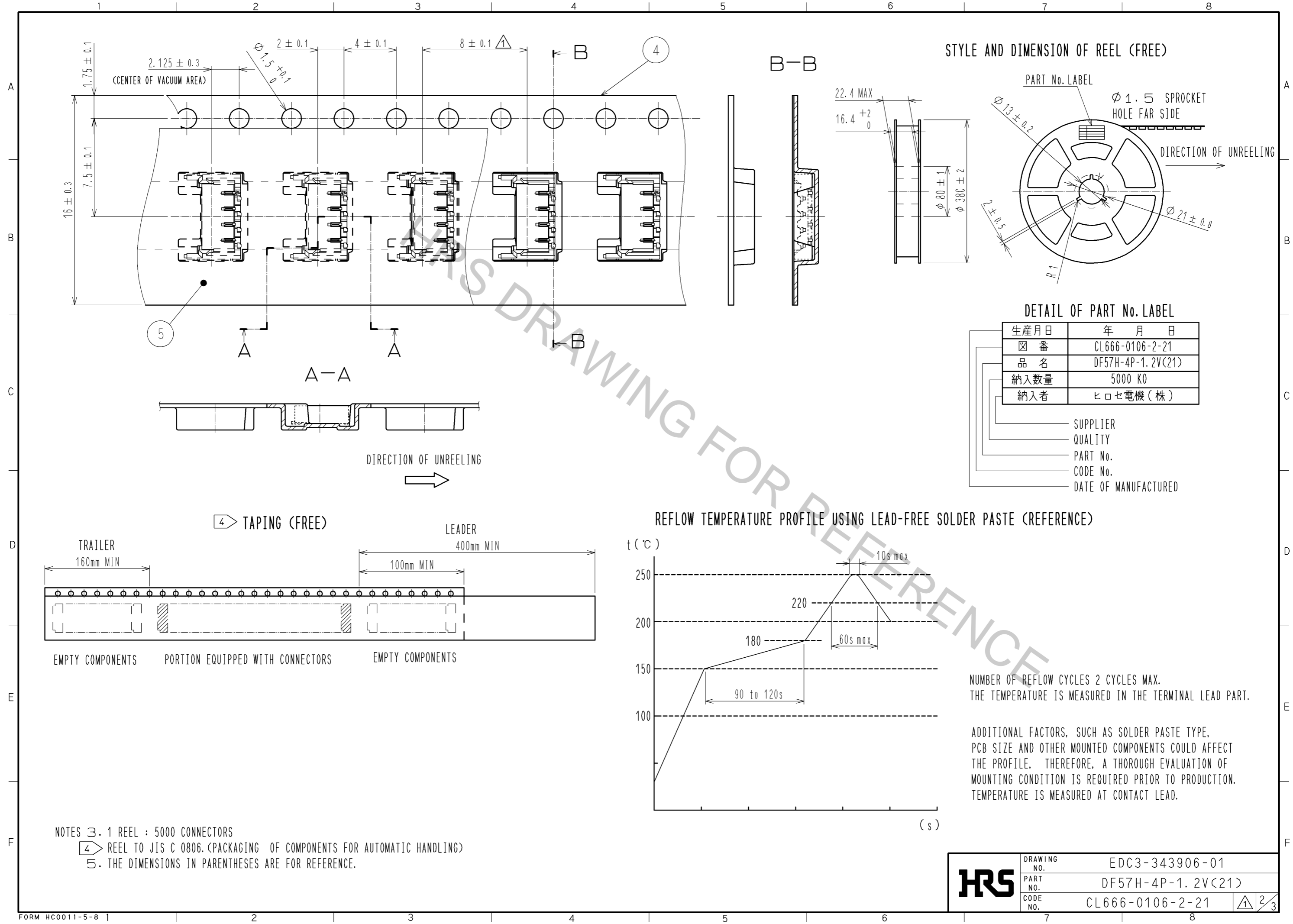
NO.	MATERIAL	FINISH .	REMARKS	NO.	MATERIAL	FINISH .	REMARKS
3	BRASS	SURFACE:TIN PLATING 1μmMIN UNDER PLATING:NICKEL PLATING 0.5μmMIN		6	PS		REEL , BLACK
2	BRASS	SURFACE:TIN PLATING 1μmMIN UNDER PLATING:NICKEL PLATING 0.5μmMIN		5	POLYESTER		CLEAR (COVER TAPE)
1	LCP	UL94V-0,BLACK		4	PS		CLEAR (EMBOSSED CARRIER TAPE)

UNITS	SCALE	COUNT	DESCRIPTION OF REVISIONS	DESIGNED	CHECKED	DATE
mm	FREE	2	DIS-H-007104	TS. KUMAZAWA	HK. UMEHARA	12.08.06

APPROVED	CHECKED	DESIGNED	DRAWN	DATE	DRAWING NO.	PART NO.	CODE NO.
KI. AKIYAMA	HK. UMEHARA	TS. KUMAZAWA	TS. KUMAZAWA	12.03.19	EDC3-343906-01	DF57H-4P-1.2V(21)	CL666-0106-2-21

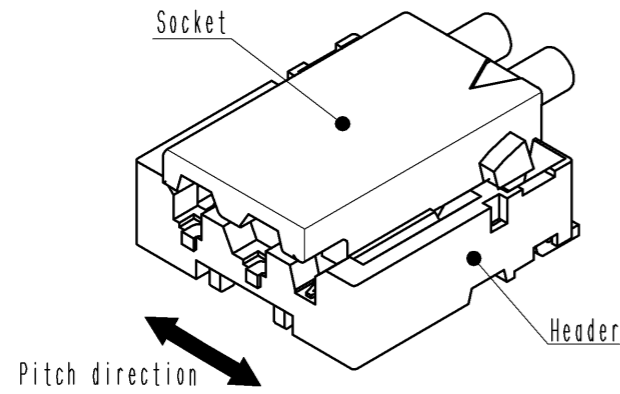


<b>HRS</b>	DRAWING NO.	EDC3-343906-01
	PART NO.	DF57H-4P-1.2V(21)
	CODE NO.	CL666-0106-2-21
		2/3

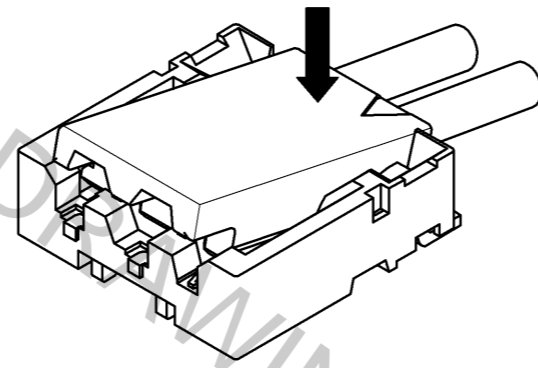
# DF57 Series Mating / Unmating Operation Instruction

## Mating

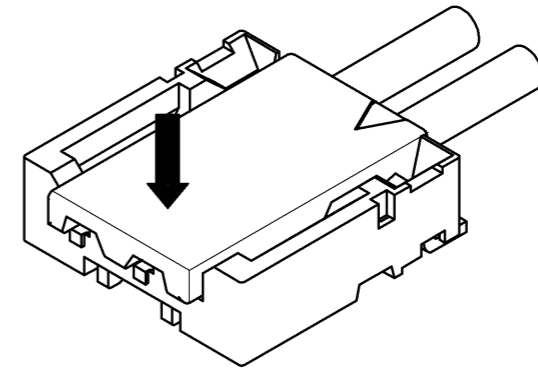
① By positioning the convexity of the socket sides to the header concavity, align the centers of the socket and the header in pitch direction.



② Slightly press the socket down at cable side to tilted angle.

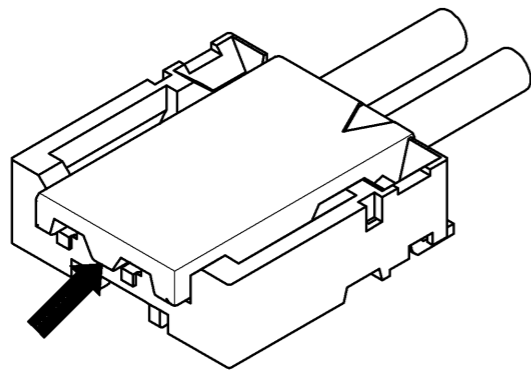


③ Press down at the lever side with stabilizing the cable side to insert. Mating completes.

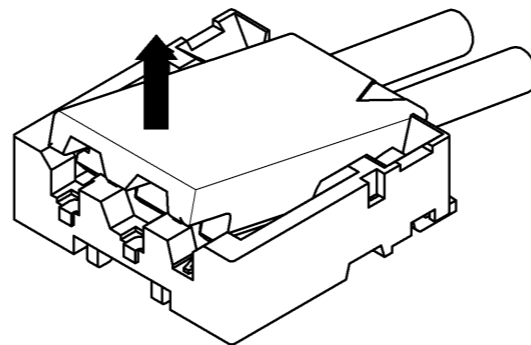


## Unmating

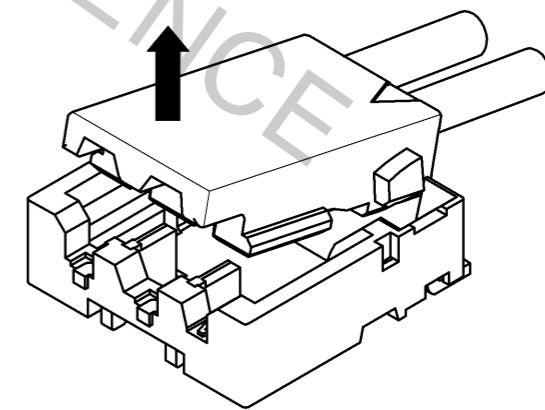
① Hook the lever with finger nail.




② Lift up to the upper direction and friction lock is released.



③ Lift up to the upper direction and positive lock is released. Removal completes.



<b>HRS</b>	DRAWING NO.	EDC3-343906-01	
	PART NO.	DF57H-4P-1.2V(21)	
	CODE NO.	CL666-0106-2-21	