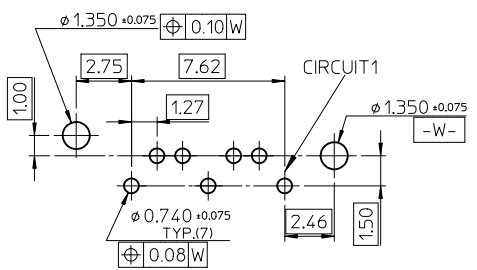
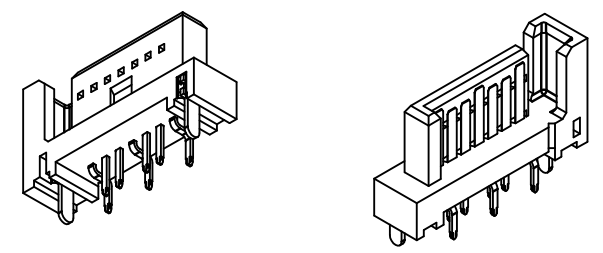
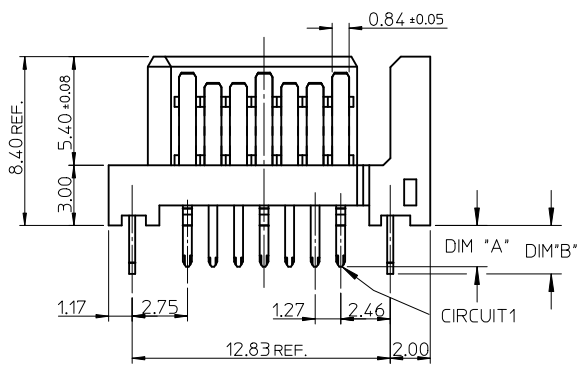
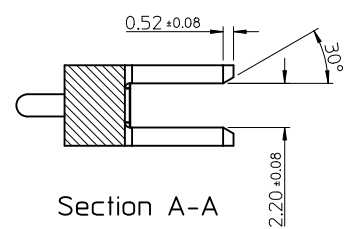
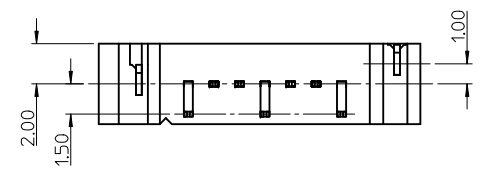
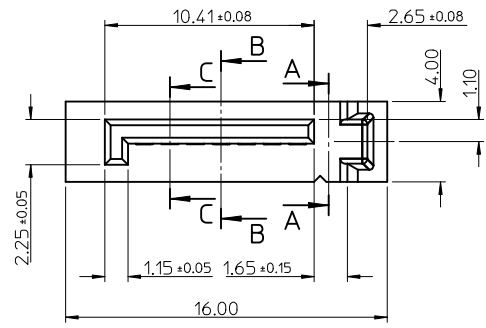
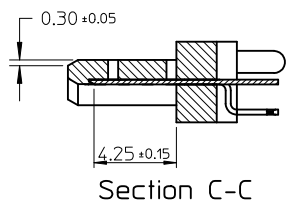


- NOTES:
- MATERIAL:
 - HOUSING: SEE TABLE, UL94V-0, COLOR: BLACK OR BLUE (SEE P/N TABLE)
 - TERMINAL/PEG: COPPER ALLOY
 - TERMINAL PLATING:
 - CONTACT AREA: GOLD PLATED
 - SOLDER TAIL: 1.27 MICRON MIN. TIN PLATED
 - UNDER PLATE: 1.27 MICRON MIN. NICKEL PLATED
 - PEG PLATING:
 - 1.27 MICRON MIN. TIN PLATED
 - OVERALL 1.27 MICRON MIN. NICKEL UNDER PLATED
 - PACKAGING SPECIFICATION REFER TO PK-67491-001
 - PRODUCT SPECIFICATION REFER TO PS-67491-001
 - MATING PART: 67489
 - RECOMMENDED PROCESS: WAVE SOLDERING
 - PRODUCT COMPLIANT TO RoHS DIRECTIVE 2002/95/EC AND ELV DIRECTIVE 2000/53/EC*



RECOMMENDED P.C.B. LAYOUT t=1.6mm OR 2.0mm

OBSOLETE PARTS EC NO: SH2012-0231 DRWING: GLLI 2012/01/18 CHKD: XQZHANG 2012/01/18 APPR: AYIN 2012/01/20	QUALITY SYMBOLS	GENERAL TOLERANCES (UNLESS SPECIFIED)		DIMENSION STYLE	SCALE	DESIGN UNITS	THIRD ANGLE PROJECTION
	$F_A=0$	mm	INCH	MM ONLY	4:1	METRIC	
	$F_C=0$	4 PLACES ± --- ± ---		DRAWN BY	DATE	TITLE	
	$F_P=0$	3 PLACES ± --- ± ---		GLL I	2012/01/18	1.27MM HIGH SPEED SERIAL PLUG VERTICAL TYPE	
		2 PLACES ± 0.15 ± ---		CHECKED BY	DATE		
		1 PLACE ± 0.25 ± ---		XQZHANG	2012/01/18		
		ANGULAR ± 3 °		APPROVED BY	DATE		
				DRAFT WHERE APPLICABLE MUST REMAIN WITHIN DIMENSIONS			
				MATERIAL NO.	DOCUMENT NO.	MOLEX INCORPORATED	
				SEE CHART IN SHEET 2	SD-67491-002	SHEET NO. 1 OF 2	
				THIS DRAWING CONTAINS INFORMATION THAT IS PROPRIETARY TO MOLEX INCORPORATED AND SHOULD NOT BE USED WITHOUT WRITTEN PERMISSION			

10	9	8	7	6	5	4	3	2	1
P/N	SUB-ASSEMBLY	CONTACT PLATING TYPE	DIM'A'	DIM'B'	PCB THICKNESS	COLOR	PLASTIC TYPE	SOLDER TAIL PLATING	
67491-1030	67599-0005	GOLD FLASH	2.05	2.40	1.60	BLACK	THERMAL PLASTIC	PURE TIN	
67491-1031	67599-0006	0.76 MICRON GOLD PLATED							
67491-1032	67599-0007	0.38 MICRON GOLD PLATED							
67491-1038	67599-0005	GOLD FLASH	3.00	3.20	2.40				
67491-1039	67599-0006	0.76 MICRON GOLD PLATED							
67491-1040	67599-0007	0.38 MICRON GOLD PLATED							
67491-2031	67599-0206	0.76 MICRON GOLD PLATED	2.05	2.40	1.60	PANTONE NO.293C ΔE<2			
67491-2032	67599-0207	0.38 MICRON GOLD PLATED							
67491-2035	67599-0205	GOLD FLASH	2.35	2.40	2.00				
67491-2036	67599-0206	0.76 MICRON GOLD PLATED							
67491-2037	67599-0207	0.38 MICRON GOLD PLATED							
67491-2038	67599-0205	GOLD FLASH	3.00	3.20	2.40				
67491-2039	67599-0206	0.76 MICRON GOLD PLATED							
67491-2040	67599-0207	0.38 MICRON GOLD PLATED							
67491-1139	67599-0106	0.76 MICRON GOLD PLATED	3.00	3.20	2.40	BLACK	HIGH TEMPERATURE THERMAL PLASTIC		



OBSOLETE PARTS EC NO: SH2012-0231 DRWNGLLI 2012/01/18 CHKD:XQZHANG 2012/01/18 APPR:AYJIN 2012/01/20	DESCRIPTION REV	QUALITY SYMBOLS	GENERAL TOLERANCES (UNLESS SPECIFIED)	DIMENSION STYLE	SCALE	DESIGN UNITS	THIRD ANGLE PROJECTION															
		$F_A=0$ $F_G=0$ $F_P=0$	<table border="1"> <tr> <th></th> <th>mm</th> <th>INCH</th> </tr> <tr> <td>4 PLACES</td> <td>± ---</td> <td>± ---</td> </tr> <tr> <td>3 PLACES</td> <td>± ---</td> <td>± ---</td> </tr> <tr> <td>2 PLACES</td> <td>± 0.15</td> <td>± ---</td> </tr> <tr> <td>1 PLACE</td> <td>± 0.25</td> <td>± ---</td> </tr> </table>		mm	INCH	4 PLACES	± ---	± ---	3 PLACES	± ---	± ---	2 PLACES	± 0.15	± ---	1 PLACE	± 0.25	± ---	MM ONLY	4:1	METRIC	
			mm	INCH																		
		4 PLACES	± ---	± ---																		
3 PLACES	± ---	± ---																				
2 PLACES	± 0.15	± ---																				
1 PLACE	± 0.25	± ---																				
	<table border="1"> <tr> <td>DRAWN BY</td> <td>DATE</td> <td>TITLE</td> </tr> <tr> <td>GLL I</td> <td>2012/01/18</td> <td rowspan="3">1.27MM HIGH SPEED SERIAL PLUG VERTICAL TYPE</td> </tr> <tr> <td>CHECKED BY</td> <td>DATE</td> </tr> <tr> <td>XQZHANG</td> <td>2012/01/18</td> </tr> </table>	DRAWN BY	DATE	TITLE	GLL I	2012/01/18	1.27MM HIGH SPEED SERIAL PLUG VERTICAL TYPE	CHECKED BY	DATE	XQZHANG	2012/01/18			MOLEX INCORPORATED								
DRAWN BY	DATE	TITLE																				
GLL I	2012/01/18	1.27MM HIGH SPEED SERIAL PLUG VERTICAL TYPE																				
CHECKED BY	DATE																					
XQZHANG	2012/01/18																					
	DRAFT WHERE APPLICABLE MUST REMAIN WITHIN DIMENSIONS	MATERIAL NO. SEE CHART	DOCUMENT NO. SD-67491-002	SHEET NO. 2 OF 2																		