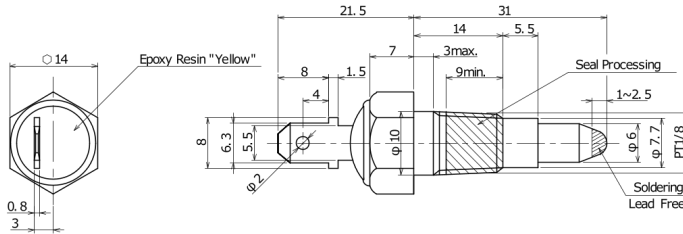


TRS1-95BPR001

Aliases (USEP95BPR00100)

KEMET, TRS-P, Thermal Reed Switch, Screw-In, 3C Temperature Accuracy, High Reliability, High-Speed Response, Long Operational Life, Excellent Environmental Durability, High Temperature Accuracy, 95°C, Break



Click [here](#) for the 3D model.

Dimensions

L	31mm NOM
W	14mm NOM

Packaging Specifications

Packaging Quantity	100
Component Weight	15 g

General Information

Series	TRS-P
Type	Thermal Reed Switch
Style	Screw-In
Description	Thermal Reed Switch
Features	High Reliability, High-Speed Response, Long Operational Life, Excellent Environmental Durability, High Temperature Accuracy
RoHS	Yes
REACH	Yes

Specifications

Switching Temperature	95C +/-3C
Temperature Range	-20/+130°C
Contact Type	Break
Voltage DC	100 VDC MAX (Opening/Closing)
Current	0.5 Amps DC MAX (Opening/Closing), 5 mAmps MIN (1VDC, Opening/Closing)
Resistance	500 mOhms MAX (Contact Resistance)
Max Opening/Closing Power	10 W (DC)
Max Opening/Closing Voltage	100 V (DC)
Differential Temperature	10C Maximum