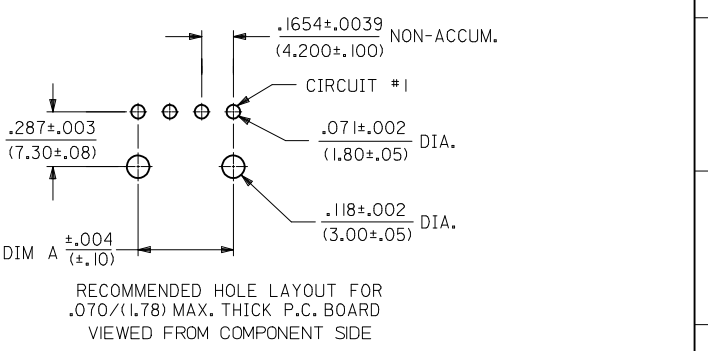
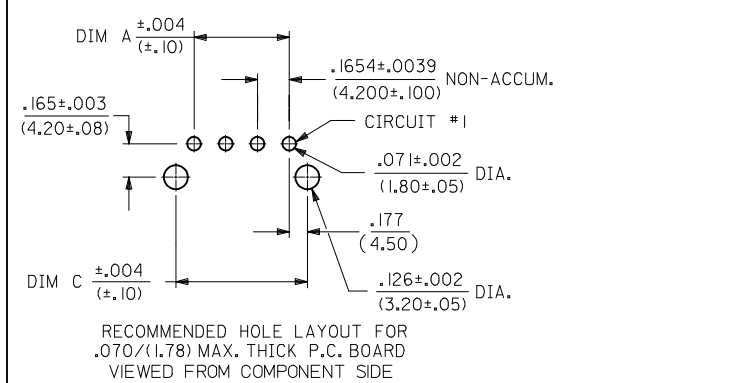
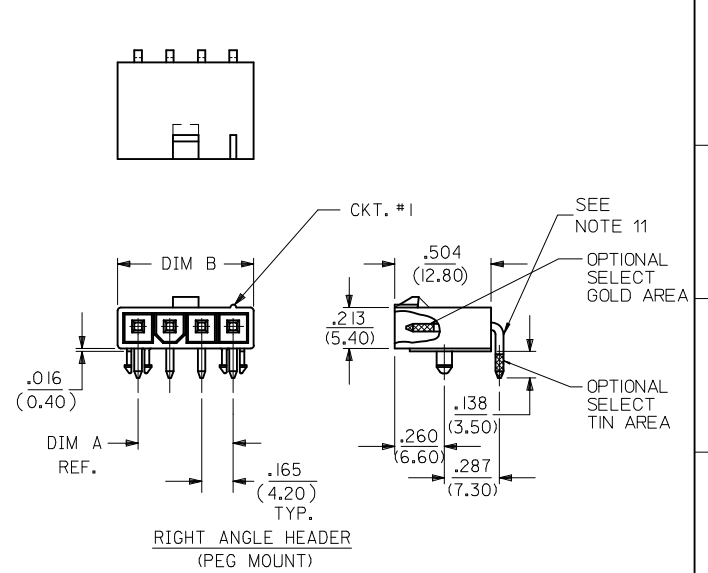
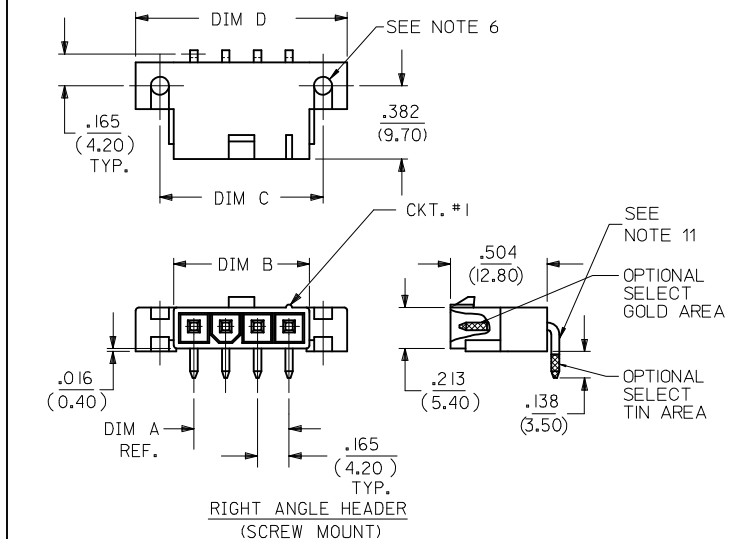


CKT SIZE	DIM A	DIM B	DIM C	DIM D
4	.496 (12.60)	.709 (18.00)	.850 (21.60)	1.102 (28.00)
5	.661 (16.80)	.874 (22.20)	1.016 (25.80)	1.268 (32.20)
6	.827 (21.00)	1.039 (26.40)	1.181 (30.00)	1.433 (36.40)
7	.992 (25.20)	1.205 (30.60)	1.346 (34.20)	1.598 (40.60)
8	1.157 (29.40)	1.370 (34.80)	1.512 (38.40)	1.764 (44.80)
9	1.323 (33.60)	1.535 (39.00)	1.677 (42.60)	1.929 (49.00)
10	1.488 (37.80)	1.701 (43.20)	1.843 (46.80)	2.094 (53.20)
11	1.654 (42.00)	1.866 (47.40)	2.008 (51.00)	2.260 (57.40)
12	1.819 (46.20)	2.031 (51.60)	2.173 (55.20)	2.425 (61.60)



LEGEND:

5569 - \*\* A \* \* - \*

- CKT. SIZE (04-12)
- ASSEMBLY
- MOUNTING & LOCK OPTION:
  - 3 = SCREW MOUNT, POSITIVE LOCK
  - 4 = PEG MOUNT, POSITIVE LOCK
  - 5 = PEG MOUNT, PASSIVE LOCK
- PLATING OPTION: (SEE NOTE 2)
- MATERIAL OPTION: (SEE NOTE 1)

- NOTES:
- MATERIAL: HOUSING: \*225\* = UNFILLED NYLON, UL94V-0, IEC 60335-1, 4TH EDITION GLOW WIRE CAPABLE, COLOR - BLACK. TERMINAL: BRASS ALLOY
  - FINISH (PLATING): \*GS\* = .000030/(0.00076) MIN. SELECT GOLD OVER .000100/(0.00254) MIN. SELECT MATTE TIN OVER .000050/(0.00127) MIN. NICKEL OVERALL \*MS\* = .000100/(0.00254) MIN. MATTE TIN OVER .000050/(0.00127) MIN. NICKEL OVERALL
  - PRODUCT SPECIFICATION: PS-5556-001
  - PACKAGING SPECIFICATION: BULK PACKED PER PK-5569-002
  - PART MATES WITH MINI-FIT JR. RECEPTACLE SERIES 5557.
  - SCREW MOUNT PARTS ARE DESIGNED FOR USE WITH #4 OR M3 SELF TAPPING SCREWS.
  - DISCOLORATION IN THE BANDOLIER CARRIER AREA OF THE PIN IS INHERENT TO THE PLATING PROCESS AND IS DUE TO THE MASKING EFFECT OF THE CARRIER. THIS DISCOLORATION IS IN A NON-FUNCTIONAL AREA OF THE PIN AND WILL NOT AFFECT THE PERFORMANCE OF THE HEADER ASSEMBLY.
  - CONNECTORS ARE NOT TO BE MATED AND UNMATED WHILE CIRCUITS ARE LIVE.
  - PARTS ARE NOT DESIGNED FOR CURRENT SHARING.
  - PART CONFORMS TO CLASS "B" REQUIREMENTS OF COSMETIC SPECIFICATION PS-45499-002, WITH THE EXCEPTION OF DISCOLORATION, FLASH AND SINK MEET CLASS "C" REQUIREMENTS.
  - FORMING MARKS ON PINS ARE ACCEPTABLE.

E.D.P. NO.	ENG. NO.	CKT. SIZE	MOUNTING OPTION	LOCK OPTION	PLATING (SEE NOTE 2)	MAT'L (SEE NOTE 1)	TOOLED
50-36-1779	5569-04A4MS-225	4	PEGS	POSITIVE	TIN/NICKEL	94V-0	YES
50-36-1747	5569-05A4MS-225	5	PEGS	POSITIVE	TIN/NICKEL	94V-0	YES

UPDATE NOTE 6 & 10	EC NO: UCP2014-0298	DRWING: NGUYEN 2013/04/03	CHKD: JBELL 2013/08/06	APPR: FSMITH 2013/08/16
REV	DESCRIPTION	QUALITY SYMBOLS		
B1		▽=0		
		▽=0		
		▽=0		

GENERAL TOLERANCES (UNLESS SPECIFIED)

	mm	INCH
4 PLACES ±	---	±---
3 PLACES ±	---	±.015
2 PLACES ±	.38	±---
1 PLACE ±	---	±---
0 PLACE ±	---	±---

ANGULAR ± 3°

DRAFT WHERE APPLICABLE MUST REMAIN WITHIN DIMENSIONS

DIMENSION STYLE: IN/MM

SCALE: METRIC

DESIGN UNITS: METRIC

THIRD ANGLE PROJECTION

DRAWN BY: JBELL DATE: 2009/06/16

CHECKED BY: SSOUSEK DATE: 2009/06/16

APPROVED BY: FSMITH DATE: 2009/06/16

TITLE: MINI-FIT JR RIGHT ANGLE HEADER ASSEMBLY SINGLE ROW, GLOW WIRE

**molex**

MATERIAL NO. SEE CHART

DOCUMENT NO. SD-5569-NL\*-225

SHEET NO. 1 OF 1

THIS DRAWING CONTAINS INFORMATION THAT IS PROPRIETARY TO MOLEX INCORPORATED AND SHOULD NOT BE USED WITHOUT WRITTEN PERMISSION