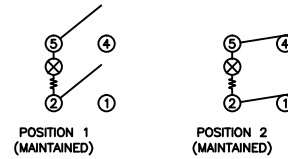


SCHEMATIC



SPECIFICATIONS

FUNCTION:
2P1T OFF-ON

RATINGS:
ANSI/UL 1054 and CAN/CSA C22.2 No. 55 (E194579):
20A 125VAC [UR, cUR]
16A 125VAC 1/4HP [cURus]
16A 250VAC 1/4HP [cURus]
6.9A 250VAC 3/4HP [cURus]

ANSI/UL 1054 (233821):
16A 125VAC 1/4HP [CSAus]
16A 250VAC 1/4HP [CSAus]

EN 61058-1:2002 and DIN/VDE 0630-1:2003-03 (40017928):
16(8) 250V~ T125/55 1E4 [ENEC10, VDE]
10(2) 250V~ T125/55 5E4 [ENEC10, VDE]
16(4) 250V~ T125/55 1E4 [ENEC10, VDE]

ILLUMINATION VOLTAGE:
125V

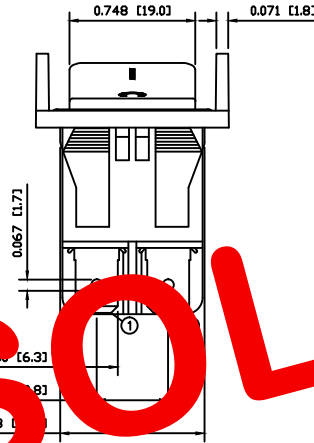
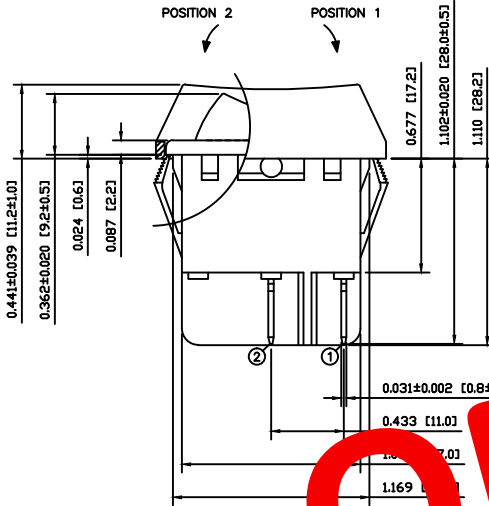
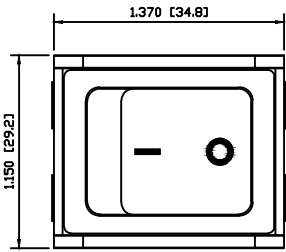
CONTACT RESISTANCE:
Initial: 20mΩ Max.

INSULATION RESISTANCE:
100MΩ Min. at 500VDC

DIELECTRIC STRENGTH:
1,000VAC For 1 Minute

ELECTRICAL LIFE:
10,000 Cycles [cURus, CSAus]
50,000 Cycles [ENEC10, VDE: 16(8)A 250V~]
50,000 Cycles [ENEC10, VDE: 10(2)A 250V~]

TEMPERATURE:
-20°C to 60°C [cURus]
-20°C to 100°C [ENEC10, VDE]



COLORS AND MARKINGS

BODY:
Black

ACTUATOR:
Transparent

MARKING:
I/O Vertical (1)

MARKING COLOR:
Black

CONTACT ID:
Black

MATERIALS

BODY:
Polyamide 6/6 (PA66), UL94 V-2

ACTUATOR:
Polycarbonate (PC), UL94 V-2

LAMP CARRIER:
Polyamide 6/6 (PA66), UL94 V-2

LAMP:
Neon Bulb

SPRING:
Piano Wire

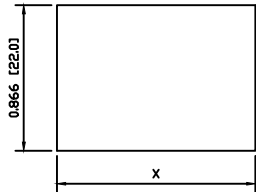
CONTACTS:
Silver Alloy

TERMINALS:
Silver Plated Copper
Silver Plated Brass

GUARD:
Polyamide 6/6 (PA66), UL94 V-2

OBSOLETE
March 2016
PCR 22177

SUGGESTED PANEL CUTOUT



PANEL THICKNESS	X
0.030~0.049 [0.75~1.25]	1.189 [30.2]
0.049~0.079 [1.25~2.00]	1.200 [30.5]

ACTUATOR	REV.	DATE	BY
A	10/02/23	CAB	
BODY	10/02/23	CAB	
COLORS	10/02/23	CAB	
MATERIALS	10/02/23	CAB	
SPECIFICATIONS	09/07/02	CAB	
REFERENCE			

THE INFORMATION CONTAINED IN THIS DOCUMENT IS PROPRIETARY TO E-SWITCH AND IS NOT TO BE COPIED OR TRANSFERRED.

INITIAL RELEASE	REV.	DESCRIPTION
18893	10/02/22	CAB
PCR	DATE	DRAWN BY

DIMENSIONS	INCHES [MILLIMETERS]
GENERAL TOLERANCES	±0.008 [±0.2] / ±1"
SCALE	DRAWING NOT TO SCALE

E-SWITCH | **LAMB INDUSTRIES**

TITLE: RB242D1011-116/ACC-F04-1

ITEM NUMBER: 14-RB2S00046

DATE: FEBRUARY 22, 2010

REVISION: A