

Inductive sensor

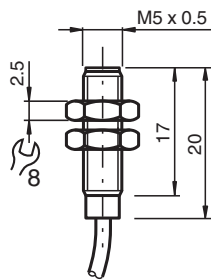
NJ0,8-5GM-N



- 0.8 mm flush
- Usable up to SIL 2 acc. to IEC 61508



Dimensions



Technical Data

General specifications

| | | |
|----------------------------|-------|----------------------|
| Switching function | | Normally closed (NC) |
| Output type | | NAMUR |
| Rated operating distance | s_n | 0.8 mm |
| Installation | | flush |
| Assured operating distance | s_a | 0 ... 0.65 mm |
| Reduction factor r_{Al} | | 0.4 |
| Reduction factor r_{Cu} | | 0.3 |
| Reduction factor r_{304} | | 0.85 |
| Output type | | 2-wire |

Nominal ratings

| | | |
|-----------------------------|-------|--|
| Nominal voltage | U_o | 8.2 V (R_i approx. 1 k Ω) |
| Operating voltage | U_B | 5 ... 25 V |
| Switching frequency | f | 0 ... 5000 Hz |
| Hysteresis | H | 3 % |
| Suitable for 2:1 technology | | yes , Reverse polarity protection diode not required |
| Current consumption | | |

Release date: 2021-05-31 Date of issue: 2021-05-31 Filename: 106334_eng.pdf

Refer to "General Notes Relating to Pepperl+Fuchs Product Information".

Pepperl+Fuchs Group
www.pepperl-fuchs.com

USA: +1 330 486 0001
fa-info@us.pepperl-fuchs.com

Germany: +49 621 776 1111
fa-info@de.pepperl-fuchs.com

Singapore: +65 6779 9091
fa-info@sg.pepperl-fuchs.com

PF PEPPERL+FUCHS

Technical Data

| | |
|---|---|
| Measuring plate not detected | ≥ 3 mA at nominal voltage |
| Measuring plate detected | ≤ 1 mA at nominal voltage |
| Functional safety related parameters | |
| MTTF _d | 5887 a |
| Mission Time (T _M) | 20 a |
| Diagnostic Coverage (DC) | 0 % |
| Compliance with standards and directives | |
| Standard conformity | |
| NAMUR | EN 60947-5-6:2000 IEC 60947-5-6:1999 |
| Standards | EN 60947-5-2:2007 EN 60947-5-2/A1:2012 IEC 60947-5-2:2007 IEC 60947-5-2 AMD 1:2012 |
| Approvals and certificates | |
| IECEX approval | |
| Equipment protection level Ga | IECEX PTB 11.0037X |
| Equipment protection level Gb | IECEX PTB 11.0037X |
| Equipment protection level Da | IECEX PTB 11.0037X |
| Equipment protection level Mb | IECEX PTB 11.0037X |
| ATEX approval | |
| Equipment protection level Ga | PTB 00 ATEX 2048 X |
| Equipment protection level Gb | PTB 00 ATEX 2048 X |
| Equipment protection level Da | PTB 00 ATEX 2048 X |
| EAC conformity | TR CU 012/2011 |
| FM approval | |
| Control drawing | 116-0165 |
| UL approval | |
| Ordinary Location | E87056 |
| Hazardous Location | E501628 |
| Control drawing | 116-0452 |
| CSA approval | cCSAus Listed, General Purpose |
| CCC approval | |
| Hazardous Location | 2020322315002256 |
| NEPSI approval | |
| NEPSI certificate | GYJ16.1393X |
| Ambient conditions | |
| Ambient temperature | -25 ... 100 °C (-13 ... 212 °F) |
| Mechanical specifications | |
| Connection type | cable PVC , 2 m |
| Core cross-section | 0.14 mm ² |
| Housing material | Stainless steel 1.4305 / AISI 303 |
| Sensing face | PBT |
| Degree of protection | IP67 |
| Cable | |
| Cable diameter | 2.6 mm ± 0.2 mm |
| Bending radius | > 10 x cable diameter |
| General information | |
| Use in the hazardous area | see instruction manuals |

Release date: 2021-05-31 Date of issue: 2021-05-31 Filename: 106334_eng.pdf

Refer to "General Notes Relating to Pepperl+Fuchs Product Information".

Pepperl+Fuchs Group
www.pepperl-fuchs.comUSA: +1 330 486 0001
fa-info@us.pepperl-fuchs.comGermany: +49 621 776 1111
fa-info@de.pepperl-fuchs.comSingapore: +65 6779 9091
fa-info@sg.pepperl-fuchs.com

PEPPERL+FUCHS

Connection



Accessories

| | | |
|--|--------------------|------------------------------|
| | <p>BF 5</p> | <p>Mounting flange, 5 mm</p> |
|--|--------------------|------------------------------|