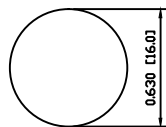
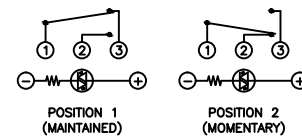


SUGGESTED PANEL CUTOUT



MAXIMUM PANEL THICKNESS: 0.551 [14.0mm]

SCHEMATIC



SPECIFICATIONS

**FUNCTION:**  
1P2T ON-(ON)

**RATING:**  
NOM-003-SCFI-2000 (200901C07839):  
2A 48VDC [NOM]

**ILLUMINATION VOLTAGE:**  
12V 20mA

**CONTACT RESISTANCE:**  
Initial: 50mΩ Max. at 1A 12VDC

**INSULATION RESISTANCE:**  
1,000MΩ Min. at 500VDC

**DIELECTRIC STRENGTH:**  
2,000VAC Min. for 1 Minute

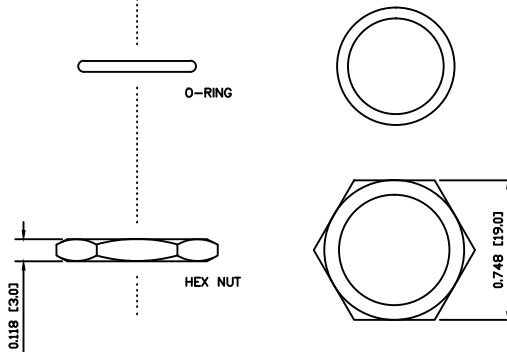
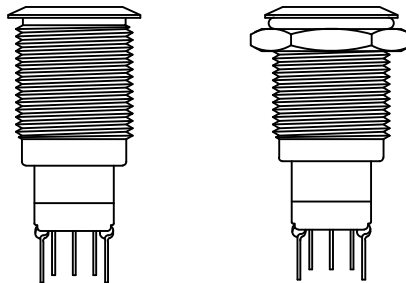
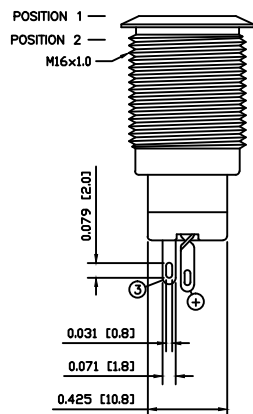
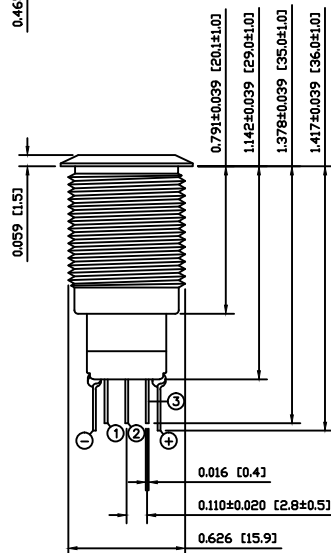
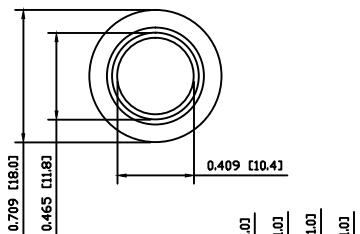
**ELECTRICAL LIFE:**  
50,000 Cycles

**MECHANICAL LIFE:**  
200,000 Cycles

**TEMPERATURE:**  
Operating: -20°C to 55°C

**INGRESS PROTECTION:**  
IP65

**APPROVALS:**  
RoHS COMPLIANT



EXPLODED VIEW

ASSEMBLED VIEW

COLORS AND FINISH

**BEZEL:**  
Stainless Steel  
Polished Finish

**ACTUATOR:**  
Stainless Steel  
Polished Finish

**ILLUMINATION:**  
Green (Forward)  
Blue (Reverse)

**LENS:**  
Transparent White

**MARKING:**  
None

MATERIALS

**BUSHING:**  
Stainless Steel (304)

**BASE:**  
Polybutylene Terephthalate (PBT)  
Polycarbonate (PC)

**ACTUATOR:**  
Stainless Steel (304)

**ILLUMINATION LENS:**  
Polycarbonate (PC)

**HARDWARE:**  
Nickel Plated Brass (H59)

**SEAL:**  
Silicone Rubber

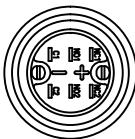
**INNER ASSEMBLY:**  
Polyoxymethylene (POM)  
Polycarbonate (PC)  
Polybutylene Terephthalate (PBT)  
Silver Plated Brass (H62)  
Beryllium Copper

**SPRING:**  
Stainless Steel (304)

**CONTACTS:**  
Silver/Cadmium Oxide (AgCdO)

**TERMINALS:**  
Silver Plated Brass (H62)

**O-RING:**  
Silicone Rubber



BODY	B	10/06/17	CAB
COLORS	A	06/07/10	CAB
MATERIALS	A	10/03/24	CAB
SPECIFICATIONS	B	06/09/28	CAB
REFERENCE	REV.	DATE	BY

THE INFORMATION CONTAINED IN THIS DOCUMENT IS PROPRIETARY TO E-SWITCH AND IS NOT TO BE COPIED OR TRANSFERRED

B	ADDED REDUCED DIAMETER SECTION UNDER BEZEL	19154	10/06/17	CAB
A	INITIAL RELEASE	18940	10/03/23	CAB
REV.	DESCRIPTION	PCR	DATE	DRAWN BY

DIMENSIONS	
INCHES [MILLIMETERS]	
GENERAL TOLERANCES	
±0.008 [±0.2] / ±1"	
SCALE	PROJECTION
DRAWING NOT TO SCALE	1st Angle

PV3WF2BOSS-3N4		
DRAWING NUMBER	DATE	REVISION
52-PV3WF2BOSS3N4	JUNE 17, 2010	B