



RPS-CT

Commercial Grade Continuous Tube

HEAT SHRINK IDENTIFICATION SYSTEM

Technical Datasheet

TTDS-269 Revision 5 - June 2020

RPS-CT Commercial Grade, Heat Shrink Identification Marker Sleeving for the identification of wires and cables.

Made from durable, flame retarded, radiation cross linked heat shrinkable polyolefin. RPS-CT is a thin wall, light weight, fast recovery 3:1 shrink ratio* sleeve, allowing the customer to cover a wide range of cable diameters

Suitable for a wide variety of applications including, commercial, industrial and transport. Printed marker sleeves meet the requirements of AS 5942 and MIL 202 Method 215 when used as a complete system, as recommended by TE Connectivity. Refer to TE document 411-121005 IDENTIFICATION PRINTER PRODUCT RIBBON MATRIX for the recommended printer/product/ribbon combinations.

RPS-CT Heat Shrink Identification Marker Sleeving is available as part of a complete identification system. The system comprises specific printers, thermal transfer ribbons and WINTOTAL software.

*Except RPS-CT-38.1mm (1-1/2inch) which is 2:1 ratio.

RPS-CT COMMERCIAL GRADE

HEAT SHRINK CABLE IDENTIFICATION SYSTEM

Features

- Self-extinguishing, non-flame propagating.
- Resistant to key Common industrial fluids (defined by RW-2510).
- Commercial grade performance.
- Can be laser marked for superior performance.
- Pre-termination Cable Identification.
- Sleeve diameters from 3.2mm to 38.1mm (1/8 to 1-1/2inch).
- More open profile for easier use.
- RPS-CT 3:1 Shrink ratio (except 38.1 size which is 2:1).

Temperature Rating

- -30°C to 105°C (-22°F to 221°F)

Product Compliance

RPS-CT fully complies with 2011/65/EU RoHS II directive, and Regulation (EC) number 1907/2006 (REACH)

Further information and a downloadable declaration covering RoHS and REACH compliance can be found at the TE Product Compliance Support Centre:

<http://www.te.com/usa-en/utilities/product-compliance.html>

Shelf Life

- Refer to TE document 408-121006 Cable Identification Shelf Life Document

Industry



Specifications / Approvals

TE Connectivity Standard

RW-2510 Specification for RPS-CT products

Rail

NFPA 130 Standard for Fixed Guideway Transit and Passenger Rail Systems, Fire protection requirements, Interior Fire Propagation Resistance.

Federal Railroad Administration, DOT, Appendix B to Part 238, Test Methods and Performance Criteria for the Flammability and Smoke Emission Characteristics of Materials used in Passenger Cars and Locomotive Cabs

Print Permanence

MIL 202 Method 215, Resistance to solvents

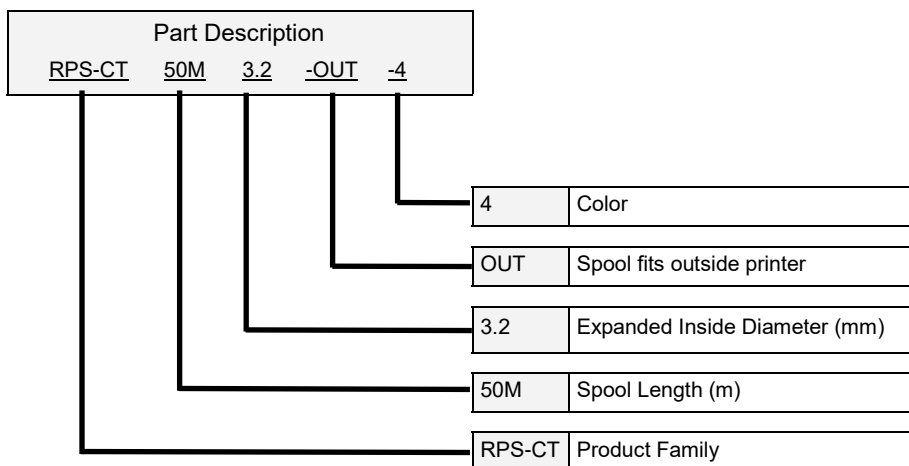
SAE AS 5942, Marking of Electrical Insulating Materials, Adherence

Industrial

UL Recognised file E35586

Where possible, TE have tested product as a finished item, including the print. Operational tests are followed by an assessment of mark adherence to validate fit form and function. Further details can be found in TE standard RW-2510





Available Options

| | | | | | | | | |
|-------------------|-----------------------------------|---|--------|-------|------|--------|------|-------|
| Spool Size | OUT | Spool does not fit in printers, recommend TE Connectivity PRINTER-UNIVERSAL-REEL-HOLDER, Part Number EC9926-000, reference TTDS-259 | | | | | | |
| Colors | Standard | Yellow | White | | | | | |
| | Code | 4 | 9 | | | | | |
| | Other colors available on request | | | | | | | |
| | Brown | Red | Orange | Green | Blue | Violet | Grey | Black |
| | 1 | 2 | 3 | 5 | 6 | 7 | 8 | 0 |

To maximise print contrast, colors are based on pastel shades.

Ordering Example: RPS-CT-50M-3.2-OUT-9

i.e. Product Family, Spool Length, Expanded Inside Diameter, OUT and Color

Ordering Information

| Ordering description | Inside diameter | | | | Recommended cable diameter use range | | Spool lengths m (ft) |
|--|-----------------------|--------|--------------------------|--------|--------------------------------------|----------------|----------------------|
| | As supplied (minimum) | | After recovery (Maximum) | | mm | inches | |
| | mm | inches | mm | inches | | | |
| RPS-CT - <spool length> -3.2 - OUT- <Color> | 3.2 ¹ | 0.125 | 1.1 | 0.04 | 1.20 to 2.56 | 0.047 to 0.101 | 50 (164) |
| RPS-CT - <spool length> -4.8 - OUT- <Color> | 4.8 ¹ | 0.189 | 1.6 | 0.06 | 1.70 to 3.84 | 0.067 to 0.151 | 50 (164) |
| RPS-CT - <spool length> -6.4 - OUT- <Color> | 6.4 ¹ | 0.250 | 2.1 | 0.08 | 2.20 to 5.10 | 0.087 to 0.201 | 50 (164) |
| RPS-CT - <spool length> -9.5 - OUT- <Color> | 9.5 ¹ | 0.375 | 3.2 | 0.13 | 3.30 to 7.60 | 0.130 to 0.299 | 50 (164) |
| RPS-CT - <spool length> -12.7 - OUT- <Color> | 12.7 ¹ | 0.500 | 4.2 | 0.17 | 4.30 to 10.16 | 0.169 to 0.402 | 50 (164) |
| RPS-CT - <spool length> -19.0 - OUT- <Color> | 19.1 ² | 0.750 | 6.4 | 0.25 | 6.50 to 15.30 | 0.256 to 0.614 | 50 (164) |
| RPS-CT - <spool length> -25.4 - OUT- <Color> | 25.4 ² | 1.000 | 8.5 | 0.33 | 8.50 to 20.30 | 0.335 to 0.799 | 50 (164) |
| RPS-CT - <spool length> -38.1 - OUT- <Color> | 38.1 ³ | 1.500 | 19.1 | 0.75 | 19.2 to 30.50 | 0.756 to 1.201 | 50 (164) |

¹ Recommended ribbon width 40mm— 2000P-RIBBON-4TT-NAR, Part No. 277493-000

² Recommended ribbon width 60mm— 2000P-RIBBON-4TT-MED, Part No. 893803-000

³ Recommended ribbon width 110mm— TMS-RJS-RIBBON-4RPSCE, Part No. 557721-000

Check TE Document 411-121005 for full and current details



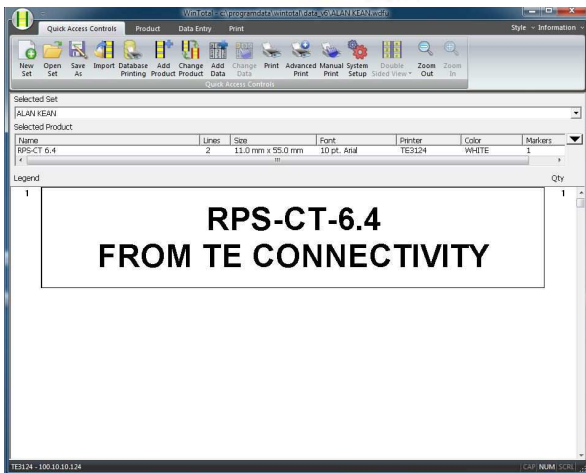


Printer Information

Print quality and print performance can only be guaranteed when specific TE printer and ribbons are used.

The current list of printers and ribbons can be found in TE document 411-121005 'Identification Printer Product Ribbon Matrix'. This document can be found in 'Access Our Tools':

<http://www.te.com/usa-en/utilities/access-product-tools-and-resources.html>

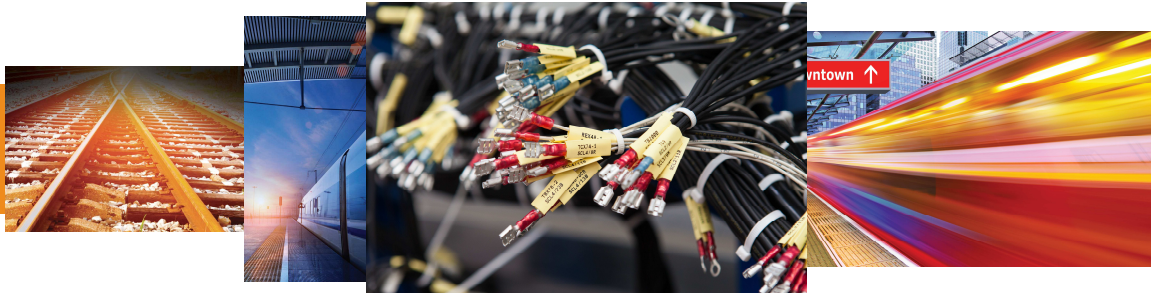


Software

WINTOTAL software, available to download for a 14 day evaluation period from the Identification Printer Software page:

<http://www.te.com/usa-en/products/identification-labeling/printers-software.html>

Contact a TE representative for further information



www.te.com

TE Connectivity, TE Connectivity (logo) and Every Connection Counts are trademarks. All other logos, products and/or company names referred to herein might be trademarks of their respective owners.

The information given herein, including drawings, illustrations and schematics which are intended for illustration purposes only, is believed to be reliable. However, TE Connectivity makes no warranties as to its accuracy or completeness and disclaims any liability in connection with its use. TE Connectivity's obligations shall only be as set forth in TE Connectivity's Standard Terms and Conditions of Sale for this product and in no case will TE Connectivity be liable for any incidental, indirect or consequential damages arising out of the sale, resale, use or misuse of the product. Users of TE Connectivity products should make their own evaluation to determine the suitability of each such product for the specific application.

© 2020 TE Connectivity Ltd. family of companies All Rights Reserved.

