



PQ2620 Transformer

APQ2620-4719

- PQ2620 Core Package
- Through Hole Design
- Operating Temperature Range: -40°C to +105°C



Electrical Specifications @25°C

Inductance @100KHz, 1.0V	Leakage Inductance @100KHz, 1.0V	DC Resistance (mΩ Max)				Turns Ratio
(3 - 1)	Short (4,5,8,9,10,11)	(3 - 1)	(4 - 5)	(9 - 8)	(11 - 10)	(3 - 1) : (4 - 5) : (9 - 8) : (11 - 10)
586μH ±7%	14.64μH Max	330	80	20	98	1 : .111 : .089 : 0.20

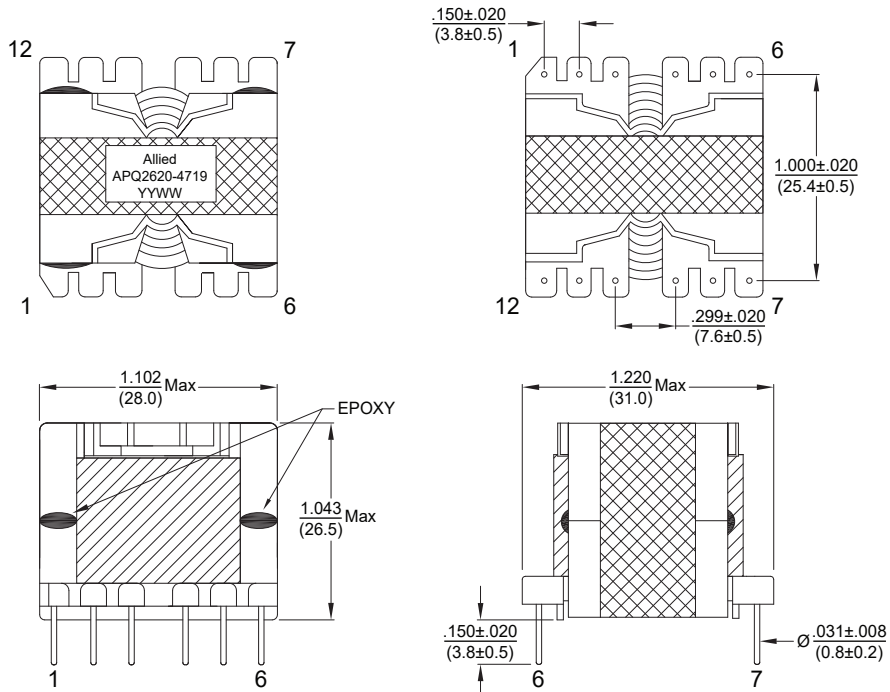
Electrical Specifications @25°C

Hi-Pot (50Hz/60Hz) VAC, 5mA, 1Sec			Insulation Resistance 100MΩ Min		
Pri - Sec	Pri - Core	Sec - Core	Pri - Sec	Pri - Core	Sec - Core
3000	1500	1500	500V	500V	500V

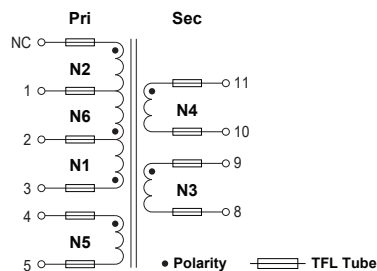
MECHANICAL

All specifications subject to change without notice

Dimensions: $\frac{\text{inch}}{\text{mm}}$



SCHEMATIC



WINDING CONSTRUCTION

