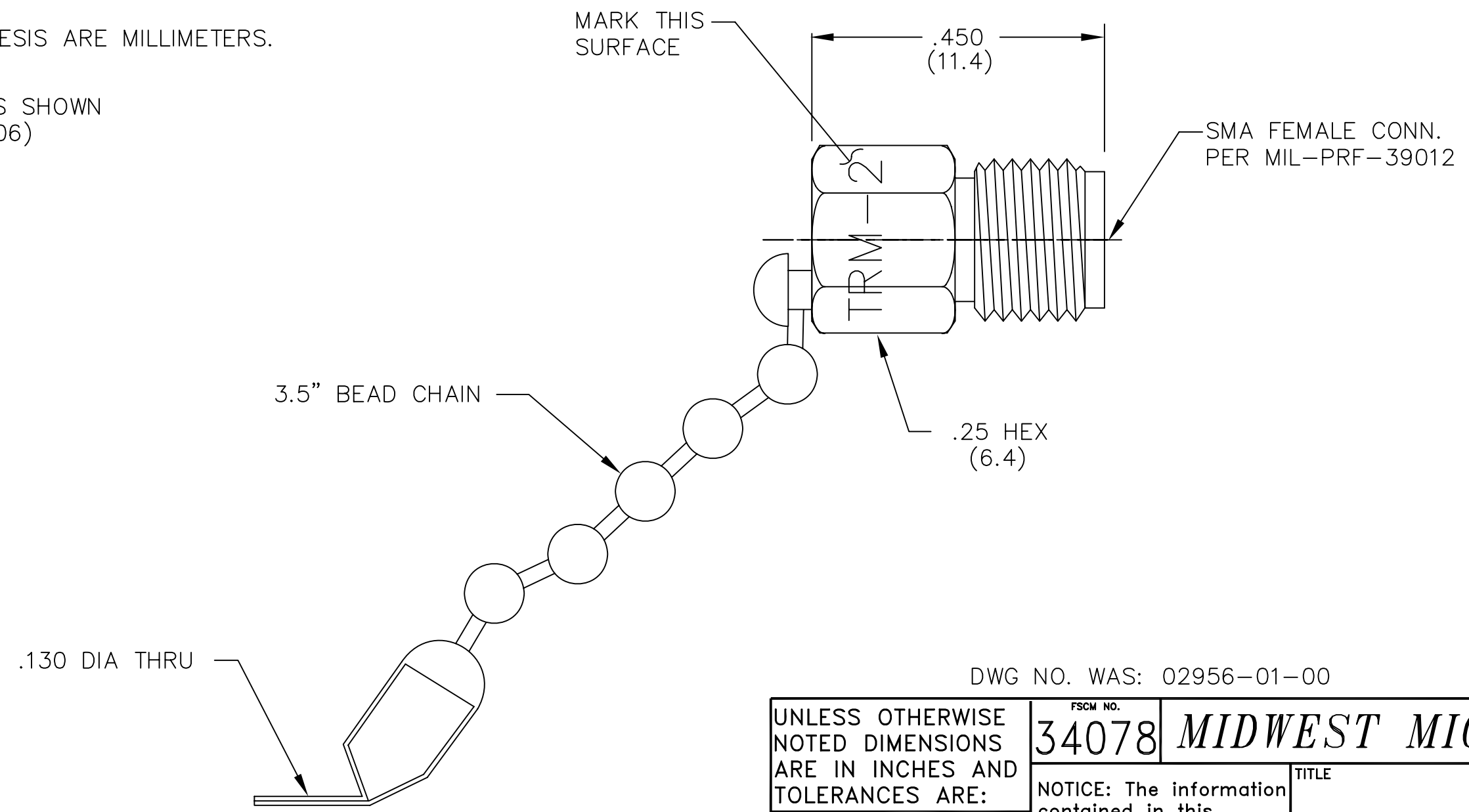


- NOTES:
- 1.0 ELECTRICAL SPECIFICATIONS:
 - 1.1 FREQUENCY RANGE: DC to 18.0 GHz
 - 1.2 MAXIMUM INPUT POWER: 0.5 WATTS @ +25°C
DERATED LINEARLY TO 0 WATTS @ +125°C
 - 1.3 OPERATING TEMP. RANGE: -55°C to +125°C
 - 1.4 IMPEDANCE: 50 OHMS
 - 1.5 VSWR: 1.05 +0.008f(GHz)
 - 2.0 DIMENSIONS IN PARENTHESIS ARE MILLIMETERS.
 - 3.0 MARKING: MARK UNIT AS SHOWN
(REF.: INK-09035-27-06)



DWG NO. WAS: 02956-01-00

REV.	DESCRIPTION	DATE
-	RELEASED	7/9/79
A	ECR 5854	2/20/88
B	ECR 6545	6/29/89
C	ECR 6827	9/18/89
C1	REDRAW ON CAD	8/30/91
D	ECN 12132	10/16/92
E	ECN 13432	3/9/94
F	ECN 18767	10/9/02

UNLESS OTHERWISE NOTED DIMENSIONS ARE IN INCHES AND TOLERANCES ARE: 3 PLACE DECIMALS ±.005 2 PLACE DECIMALS ±.02 FRACTIONS ±1/64 PARALLELITY: T.I.R. _____ FLATNESS: T.I.R. _____ CONCENTRICITY: T.I.R. _____ ANGLES AND PERPENDICULARITY: ±1'	FSCM NO. 34078	MIDWEST MICROWAVE	
	NOTICE: The information contained in this drawing is proprietary and must not be used without the permission of Midwest Microwave		TITLE TERMINATION
DRAWN/DATE A.BEATTY 8/30/91	ENG./DATE G.KOZAK 9/3/91	DRAWING NUMBER TRM-2444-FC-SMA-02	
CHECKED/DATE C.R. 8/30/91	APPROVED/DATE	SCALE: 5=1	SHEET 1 of 1