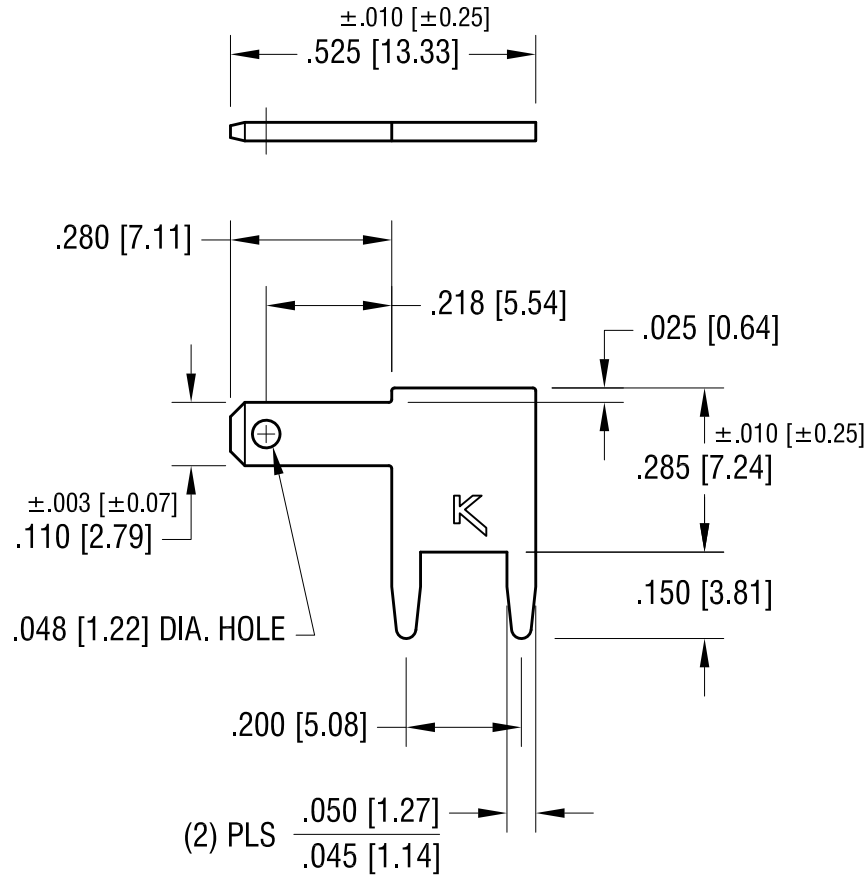
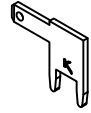



THIS DOCUMENT IS THE PROPERTY OF  
KEYSTONE ELECTRONICS CORP. AND  
SHALL NOT BE REPRODUCED, DISTRIBUTED  
OR USED AS A BASIS FOR MANUFACTURE  
WITHOUT PRIOR WRITTEN PERMISSION  
FROM KEYSTONE ELECTRONICS CORP.

**ACTUAL SIZE**



**NOTE:**

1. MOUNTING HOLE SIZE:  $.052$  [1.32] DIA.
2.  FILE NUMBER: E201546

**KEYSTONE ELECTRONICS CORP.**

www.keyelco.com • NEW HYDE PARK NY 11040 • Tel (516)328-7500

PART NAME

$.110$  [2.79] PC QUICK-FIT TERMINAL

MATERIAL

$.032$  [0.81] TH'K BRASS

FINISH

MATTE TIN PLATE

DRN BY

BOONE

DATE

8.01.95

APP'D

MR

SCALE

3X

TOLERANCES

INCH [MM]  
DECIMAL  $\pm .005$  [±0.13]

CODE

C

DWG NO.

4906

8.28.12	CHANGE AS PER ECN 12-119	C
6.10.09	CHANGE AS PER ECN 09-065	B
12.27.00	CHANGE AS PER ECN 00-126	A
DATE	DESCRIPTION	REV.