



**UDS2100**



UDS2100 Quick Start Guide



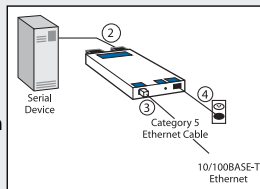
## UDS2100 QUICK START CONTENTS

What's In the Box .....	2
Pinouts .....	2
IP Addressing .....	3
Connect .....	4
Install the DeviceInstaller GUI .....	4
Assign IP Address .....	5-7
Configure the UDS2100 .....	8
Troubleshoot .....	8-9
Contact .....	9

The UDS2100 allows serial devices to securely connect to and communicate over an Ethernet network.

This Quick Start explains how to connect, configure, and troubleshoot your unit using a network connection and our DeviceInstaller software. For more detailed information or alternative configuration methods, refer to the UDS2100 User Guide on the CD.

### Ethernet, Power, and Serial Connections

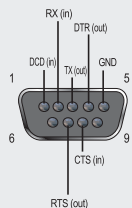


### WHAT'S IN THE BOX

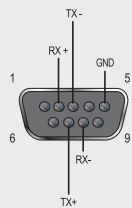
In addition to the UDS, the box contains the following items:

- DB9F to DB9F Null Modem Cable (P/N 500-164)
- Power supply
- CD with UDS2100 User Guide and utilities (DeviceInstaller and Com Port Redirector)
- Quick Start Guide

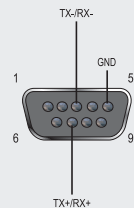
### UDS2100 PINOUTS



DB9M in RS232 Mode



DB9M in RS422 (4-Wire) Mode



DB9M in RS485 (2-Wire) Mode

### IP ADDRESSING

Your unit must have a unique IP address on your network. Two ways to assign an IP address are described below.

#### DHCP

Many networks use an automatic method of assigning an IP address called DHCP. If you are unsure whether your network uses DHCP, check with your systems administrator.

The UDS2100 looks for a DHCP server when it first powers up. You can use the DeviceInstaller software to search the network for the IP your unit has been assigned by the DHCP server and add it to the list of Lantronix devices on the network. (See Add the Unit to the Manage List.)

If the UDS2100 does not acquire an IP, or you do not use DHCP, you must assign a fixed IP address.

#### FIXED IP ADDRESS

In most installations, a fixed IP address is desirable. The systems administrator generally provides the IP address.

The IP address must be within a valid range, unique to your network, and in the same subnet as your PC. You'll need the following information before you set up the unit as described in Assign IP Address.

IP Address: \_\_\_\_\_  
 Subnet Mask: \_\_\_\_\_  
 Gateway: \_\_\_\_\_

## CONNECT

1. Connect your Ethernet cable to the 10/100 Base-T Ethernet port on the unit and attach the other end to the network drop.
2. Connect the external power supply (9 to 30 VDC, 2W maximum).
3. Confirm that one of the Link LEDs lights up. (Yellow LED is 10Mbps link/activity; green LED is 100Mbps link/activity.)

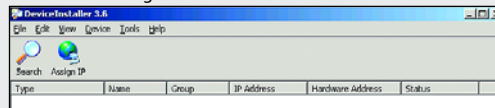
## INSTALL THE DEVICEINSTALLER GUI

1. Insert the CD into your CD-ROM drive.  
If the CD does not launch automatically:
  - a) Click the **Start** button on the Task Bar and select **Run**.
  - b) Enter your CD drive letter, colon, backslash, device\_installer, backslash, **DeviceInstaller.exe** (e.g., **E:\device\_installer\DeviceInstaller.exe**).
2. Respond to the installation wizard prompts.

## ASSIGN IP ADDRESS AND NETWORK CLASS

1. Click the **Start** button on the Task Bar and select **Programs → Lantronix → DeviceInstaller → DeviceInstaller**. The DeviceInstaller window displays.

Figure 1. DeviceInstaller Window




2. Click the **Assign IP** icon . The Device Identification window displays.

Figure 2. Device Identification

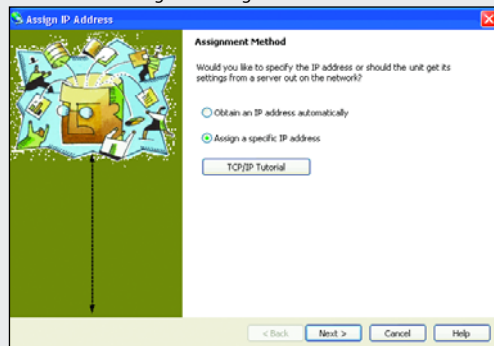


3. Enter the Hardware address of the device.

## ASSIGN IP ADDRESS CONTINUED...

4. Select **Assign a specific IP address** to assign a static IP address to the device, or select **Obtain an IP address automatically** to enable BOOTP, DHCP or Auto IP on the device. Click **Next**.

Figure 3. Assignment Method



## ASSIGN IP ADDRESS CONTINUED

5. Enter the IP address, subnet mask, and gateway for the device in XXX.XXX.XXX.XXX format. Click **Next**.

Figure 4. IP Settings

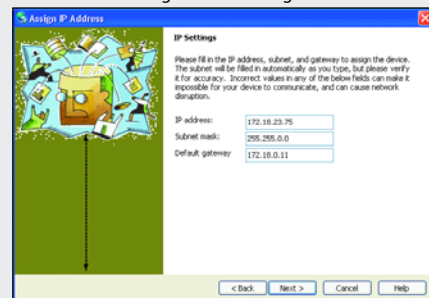
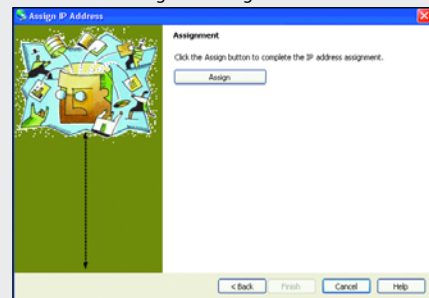


Figure 5. Assignment

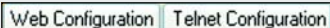
6. Click the **Assign** button to finalize the IP assignment.



## CONFIGURE THE UDS2100

Once the UDS2100 is in the device list, it can be configured.

1. Double-click the unit in the list. Details about the unit display.
2. Select one of the following tabs:



**Note:** For details about configuration settings, see the UDS2100 User Guide.

## LED TROUBLESHOOTING

The following LEDs are on the top of the UDS2100:

- ◆ Power / Diagnostic (Blue)
- ◆ RX Serial 1 Activity LED (Green)
- ◆ TX Serial 1 Activity LED (Yellow)
- ◆ RX Serial 2 Activity LED (Green)
- ◆ TX Serial 2 Activity LED (Yellow)

The following LEDs are on the RJ45 Ethernet connector:

- ◆ Ethernet Link LED on the left (Bi-color, 10Mbps = Yellow, 100 Mbps = Green)
- ◆ Ethernet Activities LED on the right (Bi-color, Half Duplex = Yellow, Full Duplex = Green)

## LEDS

Power/Diagnostic (Blue)

RX Serial 1 Activity LED (Green)

TX Serial 1 Activity LED (Yellow)

RX Serial 2 Activity LED (Green)

TX Serial 2 Activity LED (Yellow)

Ethernet Link LED  
on the left (Bi-color)

Ethernet Activity LED  
on the right (Bi-color)

## MEANING

**Steady On = Power OK**  
**Blinking 2x = No DHCP response**  
**Blinking 2x = Setup Menu active**

**Off = No data activity**  
**Blinking = Data being received by UDS2100 on channel 1**

**Off = No data activity**  
**Blinking = Data being transmitted from UDS2100 on channel 1**

**Off = No data activity**  
**Blinking = Data being received by UDS2100 on channel 2**

**Off = No data activity**  
**Blinking = Data being transmitted from UDS2100 on channel 2**

**Off = No Ethernet link established**  
**Solid Yellow = 10Mbps Ethernet link established**  
**Solid Green = 100 Mbps Ethernet Link established**

**Off = No data activity**  
**Blinking Yellow = Half Duplex data activity**  
**Blinking Green = Full Duplex data activity**

## CONTACT

For questions and technical support, please check our online knowledge base at [www.lantronix.com/support](http://www.lantronix.com/support)

Lantronix  
15353 Barranca Parkway, Irvine, CA 92618, USA  
Phone: (949) 453-3990 or Fax: (949) 453-3995

[www.lantronix.com](http://www.lantronix.com)