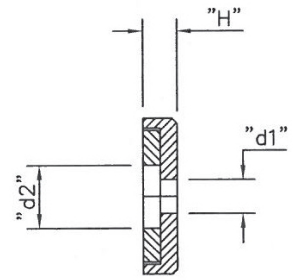
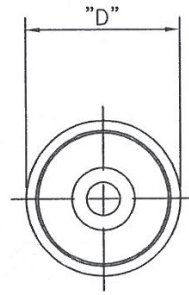


Neodymium shallow pot datasheet

Borehole

- Zinc plated body
- 80° max operating temp
- Used in point of sale etc.



Product Information

Product No.	Pull force (kg)	Dia (mm) D	Pot Height (mm) H	Hole in body (mm) D1	Hole in magnet (mm) D2	Depth (mm)	Weight (g)	Description
E1010/NEO	4	16	5	3.5	6.5	3.8	6	16mm Neo Shallow pot mag with borehole
E1011/NEO	6	20	7	4.5	8	5.5	12	20mm Neo Shallow pot mag with borehole
E1012/NEO	14	25	8	5.5	9	6	23	25mm Neo Shallow pot mag with borehole
E1013/NEO	23	32	8	5.5	9	5.5	36	32mm Neo Shallow pot mag with borehole
E1014/NEO	32	42	9	6.5	11	6	73	42mm Neo Shallow pot mag with borehole

If you have any more questions, require technical assistance and would like a quotation, simply contact us.

www.eclipsemagnetics.com

Eclipse Magnetics Ltd, Atlas Way, Sheffield, S4 7QQ, England
 T +44 (0)114 225 0600 F +44 (0)114 225 0525 E info@eclipsemagnetics.com

While every effort has been made to ensure the accuracy of the information in this publication please note that specifications may change without notice.



FM31278