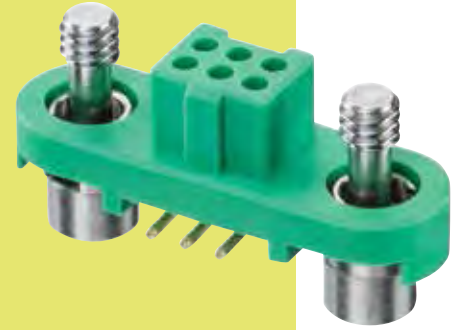


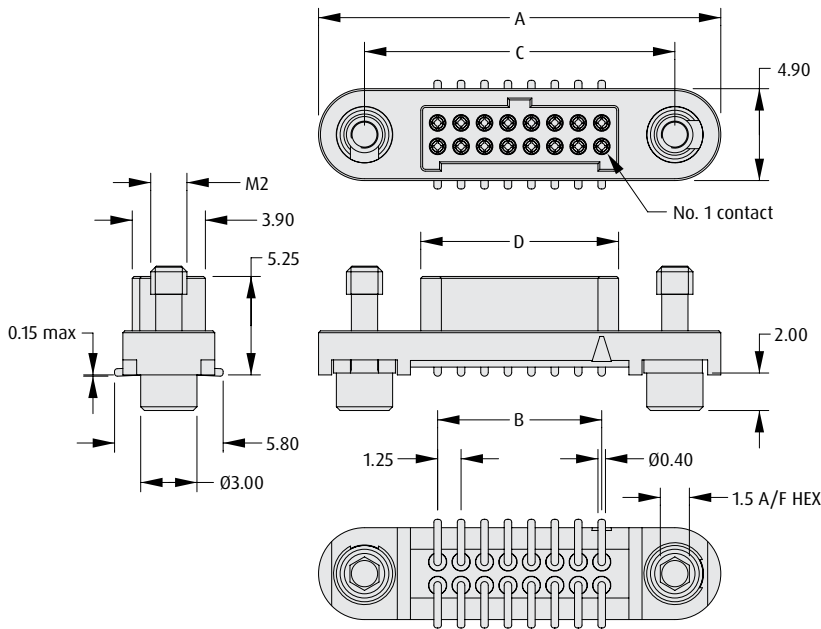
# Gecko Screw-Lok Connectors

## Female Surface Mount

- ❖ 4-finger Beryllium Copper contact.
- ❖ Stainless steel screw fixing to mate with applicable male connector.
- ❖ Positive keyway polarisation features.
- ❖ 2A current capacity, resists high vibration and shock.
- ❖ Withstands extremes of temperature: -65°C to +150°C.
- ❖ Available in Tape and Reel Packaging, with Pick and Place cap.

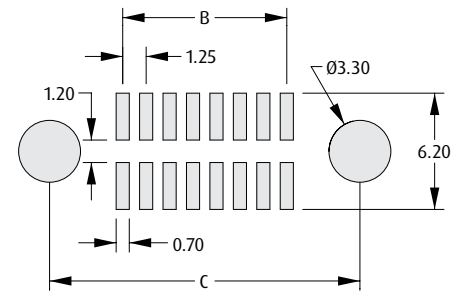


### SURFACE MOUNT



### CALCULATION

<b>A</b>	$B + 12.7$
<b>B</b>	$0.625 \times (\text{Total No. of contacts} - 2)$
<b>C</b>	$B + 7.8$
<b>D</b>	$B + 1.8$



Recommended PC Board Pattern

### HOW TO ORDER

**G125 - F S1 XX 05 F1 X**

**SERIES CODE**

**TYPE**

**S1** Surface Mount

#### PACKAGING

<b>R</b>	Tape & Reeled
<b>P</b>	Loose

#### FINISH

**05** Gold

#### TOTAL NO. OF CONTACTS

**06, 10, 12, 16**