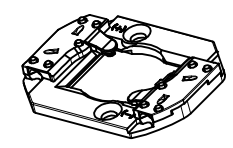
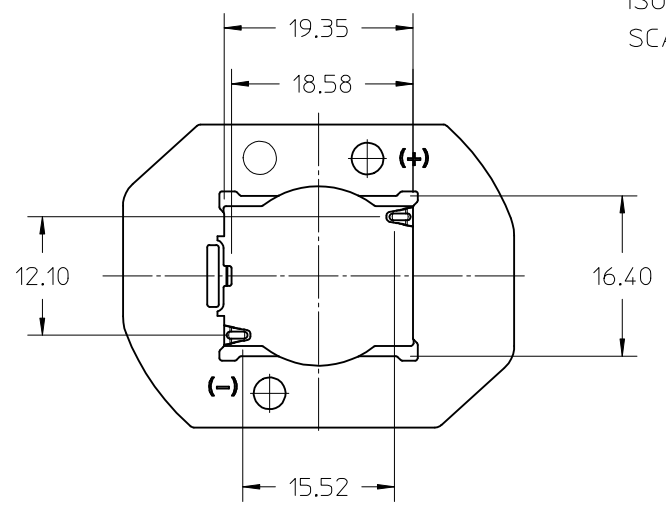
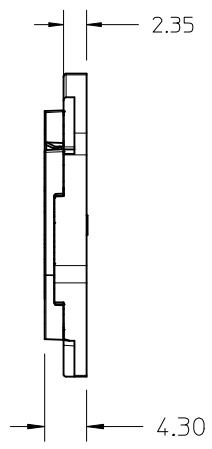
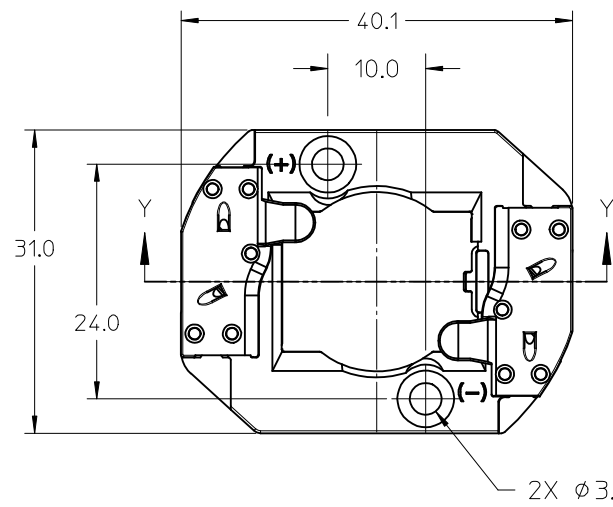


PART NUMBER	DESCRIPTION	MATERIAL	COLOR	AGENCY APPROVAL
180580-0001	COB LED HOLDER ASSEMBLY - NYLON	POLYAMIDE, GLASS FILLED	NATURAL	YES (SEE NOTE 6)
180580-0101	COB LED HOLDER ASSEMBLY - PBT	POLYESTER, GLASS FILLED	WHITE	YES (SEE NOTE 6)



ISO VIEW
SCALE 1:1

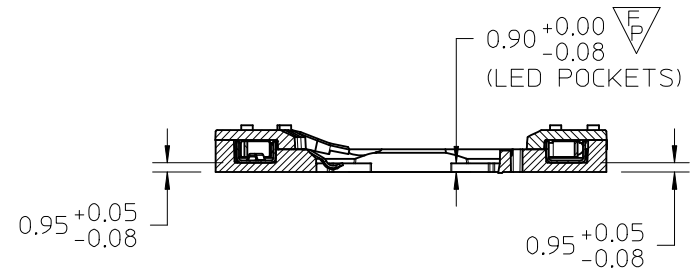
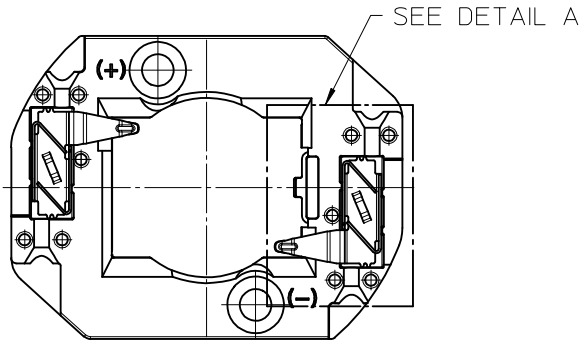


- 1) MATERIALS: HOUSIG AND CAPS: SEE CHART
- 2) WIRE TRAP TERMINALS: COPPER ALLOY
 - a. FINISH: LED CONTACT: GOLD OVER NICKEL, WIRE TRAP: TIN OVER NICKEL
- 3) THIS PRODUCT IS ELV AND ROHS COMPLIANT
- 4) APPLICABLE WIRE GAUGE - 18, 20, OR 22 AWG
 - a. SOLID WIRE IS PREFERRED
 - b. IF STRANDED WIRE IS USED, PRE-TINNED IS RECOMMENDED
 - c. 1 cm +2.00/-0.00 STRIP LENGTH IS RECOMMENDED
- 5) MOUNT HOLDER USING M3 OR 4-40 SCREWS (2), TORQUE: 0.2 MIN TO 0.4 MAX NEWTON METERS
- 6) UL RECOGNITION TO UL496; c-UL RECOGNITION TO CSA-C22.2 NO. 43 (2008) - RATED 600V UL FILE NUMBER: E345583 (SEE TABLE)
- 7) DIMENSIONS IN PARENTHESES (XX.XX) ARE FOR REFERENCE ONLY

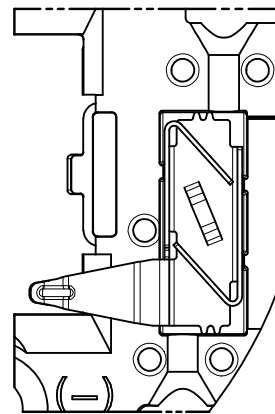
RELEASED EC NO: SSL2017-0012 DRAWN: ZAB, JANOVSKI 2016/08/17 CHKD: T3 APPR: GMEYER 2016/09/21	QUALITY SYMBOLS	GENERAL TOLERANCES (UNLESS SPECIFIED)	DIMENSION STYLE MM ONLY		SCALE 2:1	DESIGN UNITS METRIC	THIRD ANGLE PROJECTION
	▽=0	mm INCH	DRAWN BY MDEVITO	DATE 2012/09/06	TITLE COB LED HOLDER 19.0MM X 16.0MM RECTANGULAR COB		
	▽=0	4 PLACES ± --- ± ---	CHECKED BY CCARRANZA	DATE 2012/09/06			
	▽=0	3 PLACES ± --- ± ---	1 PLACE ± 0.25 ± ---	APPROVED BY DMCGOWAN	DATE 2012/09/13	DOCUMENT NO. SD-180580-001	
▽=0	2 PLACES ± 0.13 ± ---	0 PLACE ± --- ± ---	MATERIAL NO.		SHEET NO.		1 OF 4
DRAFT WHERE APPLICABLE MUST REMAIN WITHIN DIMENSIONS		ANGULAR ± 1/2°	SEE CHART		THIS DRAWING CONTAINS INFORMATION THAT IS PROPRIETARY TO MOLEX INCORPORATED AND SHOULD NOT BE USED WITHOUT WRITTEN PERMISSION		

10 9 8 7 6 5 4 3 2 1

NOTE: WIRE TRAP CAPS ARE REMOVED FOR CLARITY



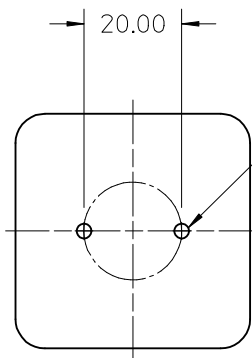
SECTION Y-Y



DETAIL A
Scale 4:1

VIEW OF TWO-WAY WIRE TRAP

WIRE TRAPS CAN ACCOMMODATE
18, 20, OR 22 GAUGE WIRE



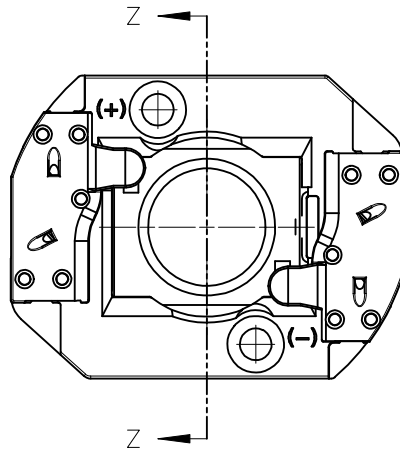
M3 OR 4-40 TAPPED HOLES (2)
TORQUE SCREWS 0.2 MIN TO
0.4 MAX NEWTON METERS

RECOMMENDED MOUNTING DIMENSIONS (NTS)

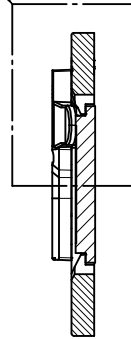
RELEASED EC NO: SSL2017-0012 T3 DRAWN: ZABJANOVSKI 2016/08/17 CHKD: APPR: GMEYER 2016/09/21 REV	QUALITY SYMBOLS	GENERAL TOLERANCES (UNLESS SPECIFIED)	DIMENSION STYLE	SCALE	DESIGN UNITS	THIRD ANGLE PROJECTION
	$\nabla = 0$ $\nabla = 0$ $\nabla = 0$	mm INCH 4 PLACES ± --- ± --- 3 PLACES ± --- ± --- 2 PLACES ± 0.13 ± --- 1 PLACE ± 0.25 ± --- 0 PLACE ± --- ± ---	MM ONLY	2:1	METRIC	
		ANGULAR ± 1/2°	DRAWN BY DATE	TITLE	COB LED HOLDER 19.0MM X 16.0MM RECTANGULAR COB molex	
		DRAFT WHERE APPLICABLE MUST REMAIN WITHIN DIMENSIONS	MDEVITO 2012/09/06 CHECKED BY DATE CCARRANZA 2012/09/06 APPROVED BY DATE DMCGOWAN 2012/09/13	SEE CHART		
			MATERIAL NO.	DOCUMENT NO.	SHEET NO.	
			SIZE B		SD-180580-001	2 OF 4

9 8 7 6 5 4 3 2 1

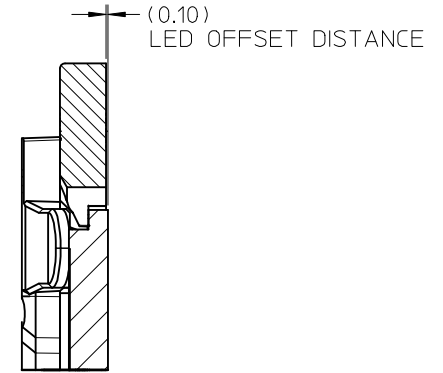
ILLUSTRATION OF HOLDER MATED WITH LED



SEE DETAIL 1



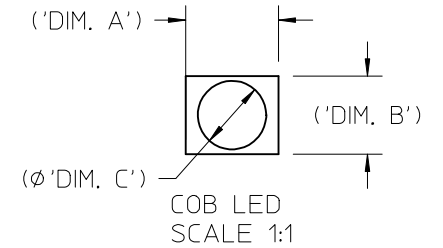
SECTION Z-Z



DETAIL 1
SCALE 4:1

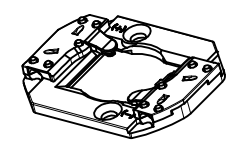
ENTER DESCRIPTION EC NO: SSL2017-0012 T3 DRWNLZABJANOVSKI 2016/08/17 CHKD: APPR:GMEYER 2016/09/21 REV	QUALITY SYMBOLS $\nabla F/0$ $\nabla F/0$ $\nabla F/0$	GENERAL TOLERANCES (UNLESS SPECIFIED) <table border="1"> <thead> <tr> <th></th> <th>mm</th> <th>INCH</th> </tr> </thead> <tbody> <tr> <td>4 PLACES</td> <td>\pm---</td> <td>\pm---</td> </tr> <tr> <td>3 PLACES</td> <td>\pm---</td> <td>\pm---</td> </tr> <tr> <td>2 PLACES</td> <td>± 0.13</td> <td>\pm---</td> </tr> <tr> <td>1 PLACE</td> <td>± 0.25</td> <td>\pm---</td> </tr> <tr> <td>0 PLACE</td> <td>\pm---</td> <td>\pm---</td> </tr> </tbody> </table>		mm	INCH	4 PLACES	\pm ---	\pm ---	3 PLACES	\pm ---	\pm ---	2 PLACES	± 0.13	\pm ---	1 PLACE	± 0.25	\pm ---	0 PLACE	\pm ---	\pm ---	DIMENSION STYLE MM ONLY	SCALE 2:1	DESIGN UNITS METRIC	THIRD ANGLE PROJECTION
		mm	INCH																					
	4 PLACES	\pm ---	\pm ---																					
	3 PLACES	\pm ---	\pm ---																					
2 PLACES	± 0.13	\pm ---																						
1 PLACE	± 0.25	\pm ---																						
0 PLACE	\pm ---	\pm ---																						
		ANGULAR $\pm 1/2^\circ$	DRAWN BY MDEVITO	DATE 2012/09/06	TITLE COB LED HOLDER 19.0MM X 16.0MM RECTANGULAR COB																			
		DRAFT WHERE APPLICABLE MUST REMAIN WITHIN DIMENSIONS	CHECKED BY CCARRANZA	DATE 2012/09/06	APPROVED BY DMCGOWAN																			
			MATERIAL NO. SEE CHART	DATE 2012/09/13	DOCUMENT NO. SD-180580-001	SHEET NO. 3 OF 4																		

COB MFG.	TYPE	DIM. 'A'	DIM. 'B'	THK	DIM. 'C'
NICHIA	NFC*L060B-V*	19.0	16.0	1.0	13.5
NICHIA	NVC*L024*	19.0	16.0	1.0	13.0
NICHIA	NFC*L036B*	19.0	16.0	1.0	10.7
LUMILEDS	LUXEON 1202/1203	19.0	16.0	1.0	11.3
SAMSUNG	LC040C	19.0	16.0	1.0	12.6

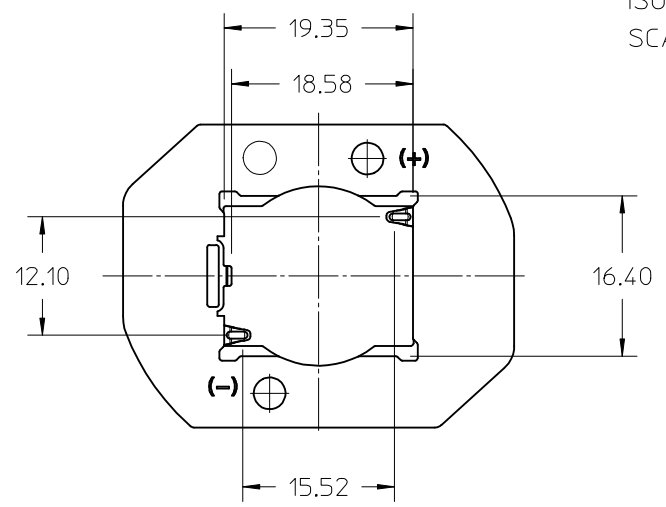
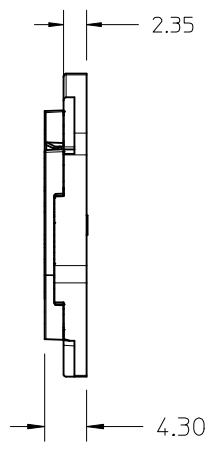
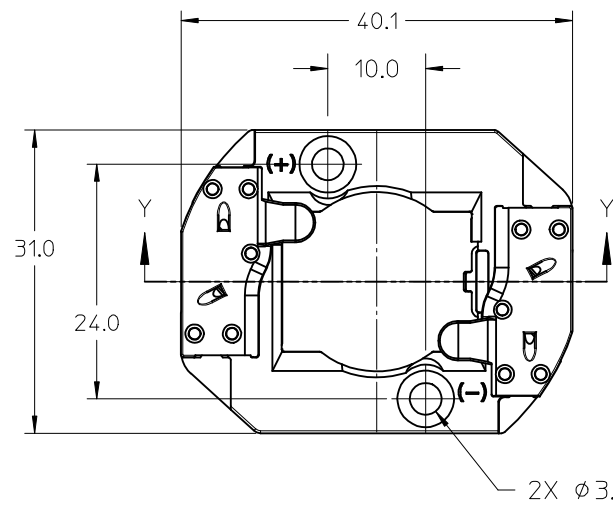


ENTER DESCRIPTION EC NO: SSL2017-0012 TDR: DRWIN: ZAB, JANOVSKI 2016/08/17 CHKD: 3 APPR: GMEYER 2016/09/21 REV DESCRIPTION	QUALITY SYMBOLS	GENERAL TOLERANCES (UNLESS SPECIFIED)		DIMENSION STYLE MM ONLY		SCALE 2:1	DESIGN UNITS METRIC	THIRD ANGLE PROJECTION	
	▽=0	mm	INCH	DRAWN BY MDEVITO	DATE 2012/09/06	TITLE COB LED HOLDER 19.0MM X 16.0MM RECTANGULAR COB			
	▽=0	4 PLACES ± --- ± ---	3 PLACES ± --- ± ---	CHECKED BY CCARRANZA	DATE 2012/09/06				
		2 PLACES ± 0.13 ± ---	1 PLACE ± 0.25 ± ---	0 PLACE ± --- ± ---	APPROVED BY DMCGOWAN	DATE 2012/09/13	molex DOCUMENT NO. SD-180580-001 SHEET NO. 4 OF 4		
		ANGULAR ± 1/2°		MATERIAL NO.					
	DRAFT WHERE APPLICABLE MUST REMAIN WITHIN DIMENSIONS			SIZE B	SEE CHART				THIS DRAWING CONTAINS INFORMATION THAT IS PROPRIETARY TO MOLEX INCORPORATED AND SHOULD NOT BE USED WITHOUT WRITTEN PERMISSION

PART NUMBER	DESCRIPTION	MATERIAL	COLOR	AGENCY APPROVAL
180580-0001	COB LED HOLDER ASSEMBLY - NYLON	POLYAMIDE, GLASS FILLED	NATURAL	YES (SEE NOTE 6)
180580-0101	COB LED HOLDER ASSEMBLY - PBT	POLYESTER, GLASS FILLED	WHITE	YES (SEE NOTE 6)



ISO VIEW
SCALE 1:1

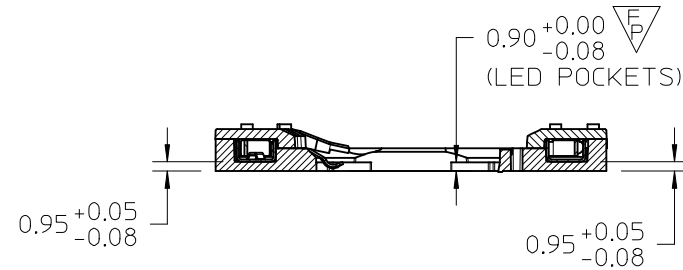
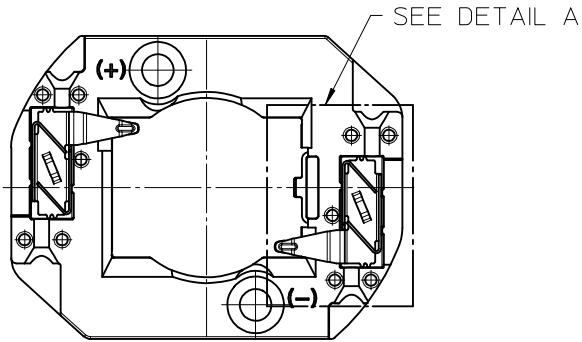


- 1) MATERIALS: HOUSIG AND CAPS: SEE CHART
- 2) WIRE TRAP TERMINALS: COPPER ALLOY
 - a. FINISH: LED CONTACT: GOLD OVER NICKEL, WIRE TRAP: TIN OVER NICKEL
- 3) THIS PRODUCT IS ELV AND ROHS COMPLIANT
- 4) APPLICABLE WIRE GAUGE - 18, 20, OR 22 AWG
 - a. SOLID WIRE IS PREFERRED
 - b. IF STRANDED WIRE IS USED, PRE-TINNED IS RECOMMENDED
 - c. 1 cm +2.00/-0.00 STRIP LENGTH IS RECOMMENDED
- 5) MOUNT HOLDER USING M3 OR 4-40 SCREWS (2), TORQUE: 0.2 MIN TO 0.4 MAX NEWTON METERS
- 6) UL RECOGNITION TO UL496; c-UL RECOGNITION TO CSA-C22.2 NO. 43 (2008) - RATED 600V UL FILE NUMBER: E345583 (SEE TABLE)
- 7) DIMENSIONS IN PARENTHESES (XX.XX) ARE FOR REFERENCE ONLY

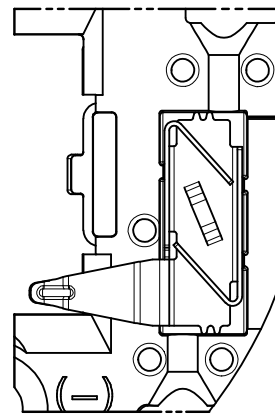
RELEASED EC NO: SSL2017-0012 DRAWN: ZABJANOVSKI 2016/08/17 CHKD: APPR: GMEYER 2016/09/21 REV	QUALITY SYMBOLS	GENERAL TOLERANCES (UNLESS SPECIFIED)	DIMENSION STYLE MM ONLY		SCALE 2:1	DESIGN UNITS METRIC	THIRD ANGLE PROJECTION
	▽=0	mm INCH	DRAWN BY MDEVITO	DATE 2012/09/06	TITLE COB LED HOLDER 19.0MM X 16.0MM RECTANGULAR COB molex		
	▽=0	4 PLACES ± --- ± ---	CHECKED BY CCARRANZA	DATE 2012/09/06			
	▽=0	3 PLACES ± --- ± ---	1 PLACE ± 0.25 ± ---	APPROVED BY DMCGOWAN	DATE 2012/09/13	DOCUMENT NO. SD-180580-001	SHEET NO. 1 OF 4
▽=0	2 PLACES ± 0.13 ± ---	0 PLACE ± --- ± ---	MATERIAL NO. SEE CHART		THIS DRAWING CONTAINS INFORMATION THAT IS PROPRIETARY TO MOLEX INCORPORATED AND SHOULD NOT BE USED WITHOUT WRITTEN PERMISSION		
DRAFT WHERE APPLICABLE MUST REMAIN WITHIN DIMENSIONS		ANGULAR ± 1/2°					

10 9 8 7 6 5 4 3 2 1

NOTE: WIRE TRAP CAPS ARE REMOVED FOR CLARITY



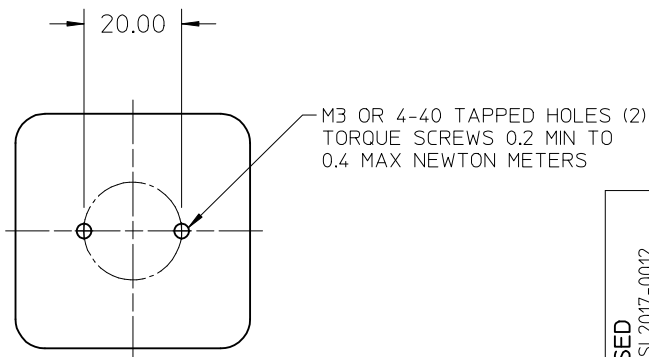
SECTION Y-Y



DETAIL A
Scale 4:1

VIEW OF TWO-WAY WIRE TRAP

WIRE TRAPS CAN ACCOMMODATE
18, 20, OR 22 GAUGE WIRE

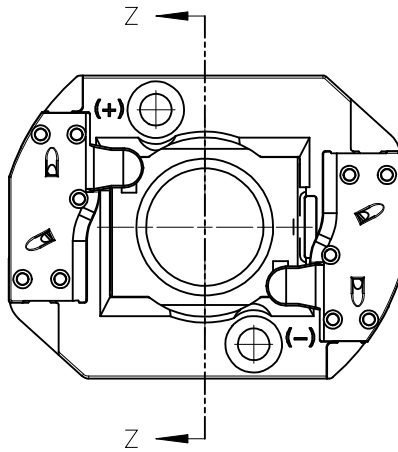


RECOMMENDED MOUNTING DIMENSIONS (NTS)

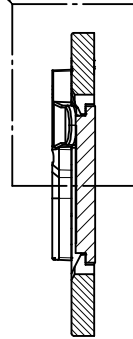
RELEASED EC NO: SSL2017-0012 T3 DRAWN: ZABJANOVSKI 2016/08/17 CHKD: APPR: GMEYER 2016/09/21 REV	QUALITY SYMBOLS	GENERAL TOLERANCES (UNLESS SPECIFIED)	DIMENSION STYLE MM ONLY		SCALE 2:1	DESIGN UNITS METRIC	THIRD ANGLE PROJECTION
	▽=0	mm INCH	DRAWN BY	DATE	TITLE COB LED HOLDER 19.0MM X 16.0MM RECTANGULAR COB molex DOCUMENT NO. SD-180580-001 SHEET NO. 2 OF 4		
	▽=0	4 PLACES ± --- ± ---	MDEVITO	2012/09/06			
	▽=0	3 PLACES ± --- ± ---	CHECKED BY	DATE			
▽=0	2 PLACES ± 0.13 ± ---	CCARRANZA	2012/09/06				
		1 PLACE ± 0.25 ± ---	APPROVED BY	DATE			
		0 PLACE ± --- ± ---	DMCGOWAN	2012/09/13			
		ANGULAR ± 1/2°	MATERIAL NO.				
		DRAFT WHERE APPLICABLE MUST REMAIN WITHIN DIMENSIONS	SEE CHART				
			SIZE B	THIS DRAWING CONTAINS INFORMATION THAT IS PROPRIETARY TO MOLEX INCORPORATED AND SHOULD NOT BE USED WITHOUT WRITTEN PERMISSION			

9 8 7 6 5 4 3 2 1

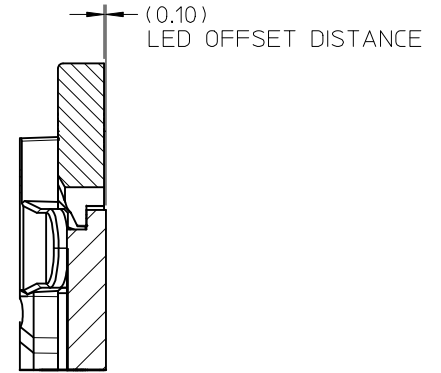
ILLUSTRATION OF HOLDER MATED WITH LED



SEE DETAIL 1



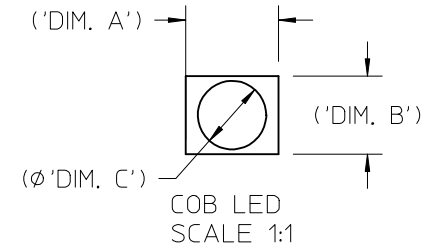
SECTION Z-Z



DETAIL 1
SCALE 4:1

ENTER DESCRIPTION EC NO: SSL2017-0012 T3 DRWNLZABJANOVSKI 2016/08/17 CHKD: APPR:GMEYER 2016/09/21 REV	QUALITY SYMBOLS $\nabla F/0$ $\nabla F/0$ $\nabla F/0$	GENERAL TOLERANCES (UNLESS SPECIFIED) <table border="1"> <thead> <tr> <th></th> <th>mm</th> <th>INCH</th> </tr> </thead> <tbody> <tr> <td>4 PLACES</td> <td>\pm---</td> <td>\pm---</td> </tr> <tr> <td>3 PLACES</td> <td>\pm---</td> <td>\pm---</td> </tr> <tr> <td>2 PLACES</td> <td>± 0.13</td> <td>\pm---</td> </tr> <tr> <td>1 PLACE</td> <td>± 0.25</td> <td>\pm---</td> </tr> <tr> <td>0 PLACE</td> <td>\pm---</td> <td>\pm---</td> </tr> </tbody> </table>		mm	INCH	4 PLACES	\pm ---	\pm ---	3 PLACES	\pm ---	\pm ---	2 PLACES	± 0.13	\pm ---	1 PLACE	± 0.25	\pm ---	0 PLACE	\pm ---	\pm ---	DIMENSION STYLE MM ONLY DRAWN BY DATE MDEVITO 2012/09/06 CHECKED BY DATE CCARRANZA 2012/09/06 APPROVED BY DATE DMCGOWAN 2012/09/13	SCALE 2:1 TITLE COB LED HOLDER 19.0MM X 16.0MM RECTANGULAR COB	DESIGN UNITS METRIC THIRD ANGLE PROJECTION
		mm	INCH																				
	4 PLACES	\pm ---	\pm ---																				
	3 PLACES	\pm ---	\pm ---																				
2 PLACES	± 0.13	\pm ---																					
1 PLACE	± 0.25	\pm ---																					
0 PLACE	\pm ---	\pm ---																					
DRAFT WHERE APPLICABLE MUST REMAIN WITHIN DIMENSIONS	MATERIAL NO. SEE CHART	DOCUMENT NO. SD-180580-001	SHEET NO. 3 OF 4																				
SIZE B	THIS DRAWING CONTAINS INFORMATION THAT IS PROPRIETARY TO MOLEX INCORPORATED AND SHOULD NOT BE USED WITHOUT WRITTEN PERMISSION																						
molex																							

COB MFG.	TYPE	DIM. 'A'	DIM. 'B'	THK	DIM. 'C'
NICHIA	NFC*L060B-V*	19.0	16.0	1.0	13.5
NICHIA	NVC*L024*	19.0	16.0	1.0	13.0
NICHIA	NFC*L036B*	19.0	16.0	1.0	10.7
LUMILEDS	LUXEON 1202/1203	19.0	16.0	1.0	11.3
SAMSUNG	LC040C	19.0	16.0	1.0	12.6



ENTER DESCRIPTION EC NO: SSL2017-0012 T1 DRWNLZABJANOVSKI 2016/08/17 CHKD: 3 APPR: GMEYER 2016/09/21 REV DESCRIPTION	QUALITY SYMBOLS	GENERAL TOLERANCES (UNLESS SPECIFIED)	DIMENSION STYLE	SCALE	DESIGN UNITS	THIRD ANGLE PROJECTION
	▽=0	mm INCH	MM ONLY	2:1	METRIC	☉
	▽=0	4 PLACES ± --- ± ---	DRAWN BY DATE	TITLE COB LED HOLDER 19.0MM X 16.0MM RECTANGULAR COB molex		
		3 PLACES ± --- ± ---	MDEVITO 2012/09/06			
		2 PLACES ± 0.13 ± ---	CHECKED BY DATE	DOCUMENT NO. SD-180580-001 SHEET NO. 4 OF 4		
		1 PLACE ± 0.25 ± ---	CCARRANZA 2012/09/06			
	0 PLACE ± --- ± ---	APPROVED BY DATE	THIS DRAWING CONTAINS INFORMATION THAT IS PROPRIETARY TO MOLEX INCORPORATED AND SHOULD NOT BE USED WITHOUT WRITTEN PERMISSION			
	ANGULAR ± 1/2°	DMCGOWAN 2012/09/13				
DRAFT WHERE APPLICABLE MUST REMAIN WITHIN DIMENSIONS		MATERIAL NO.	SEE CHART			