

## Housing - HC-D 50-TMQ-76/M1PG29S - 1775839

Please be informed that the data shown in this PDF Document is generated from our Online Catalog. Please find the complete data in the user's documentation. Our General Terms of Use for Downloads are valid (<http://phoenixcontact.com/download>)



Sleeve housing, with double locking latch, height 76 mm, with screw connection, 1x Pg29, lateral cable entry



### Key Commercial Data

Packing unit	1 STK
GTIN	 4 017918 038380
GTIN	4017918038380
Weight per Piece (excluding packing)	414.000 g
Custom tariff number	85389099
Country of origin	Germany

### Technical data

#### Dimensions

Height	76 mm
Width	56 mm
Length	82 mm
Wrench size, union nut	37 mm
External cable diameter	18 mm ... 27 mm

#### Ambient conditions

Degree of protection of housing (IP)	IP65
Ambient temperature (operation)	-40 °C ... 125 °C

#### General

# Housing - HC-D 50-TMQ-76/M1PG29S - 1775839

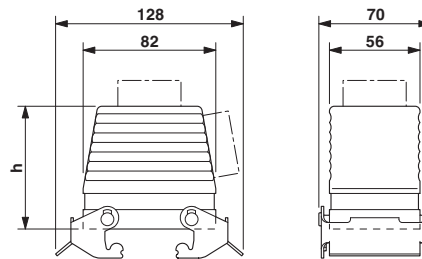
## Technical data

### General

Note	For contact inserts HC-D25, A16/A32
Size	D50
Housing type	Sleeve housing
Locking type	With double locking latch
No. of cable outlets	1
Cable exit	lateral
Screw connection	with
Type of the screw connection	1x Pg29
Housing material	Aluminum die-cast
Housing surface material	Powder-coated, gray
Cable gland material	Nickel-plated brass
Cable seal material	NBR
Material lock	Steel, galvanized

## Drawings

Dimensional drawing



## Classifications

eCl@ss

eCl@ss 4.0	27140816
eCl@ss 4.1	27140816
eCl@ss 5.0	27143424
eCl@ss 5.1	27143424
eCl@ss 6.0	27143424
eCl@ss 7.0	27440209
eCl@ss 8.0	27440202
eCl@ss 9.0	27440202

# Housing - HC-D 50-TMQ-76/M1PG29S - 1775839

## Classifications

### ETIM

ETIM 2.0	EC000437
ETIM 3.0	EC000437
ETIM 4.0	EC000437
ETIM 5.0	EC000437

### UNSPSC

UNSPSC 6.01	31261502
UNSPSC 7.0901	31261502
UNSPSC 11	31261502
UNSPSC 12.01	31261502
UNSPSC 13.2	31261502

## Approvals

### Approvals

---

### Approvals

### EAC

---

### Ex Approvals

---

## Approval details

EAC 7500651.22.01.00246
-------------------------

---