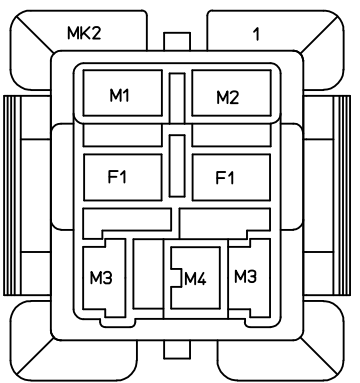
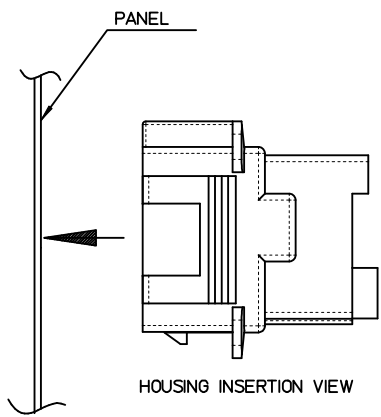
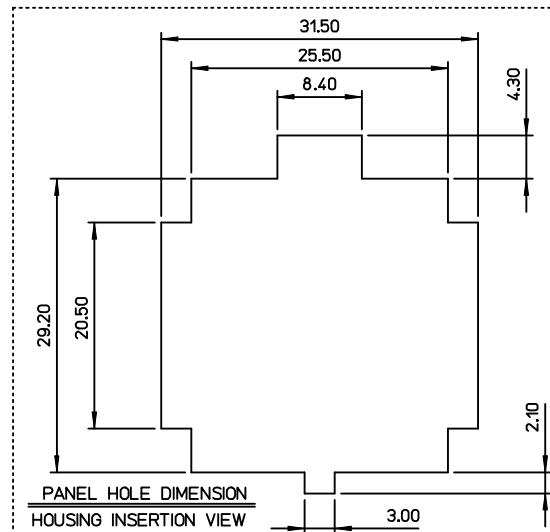
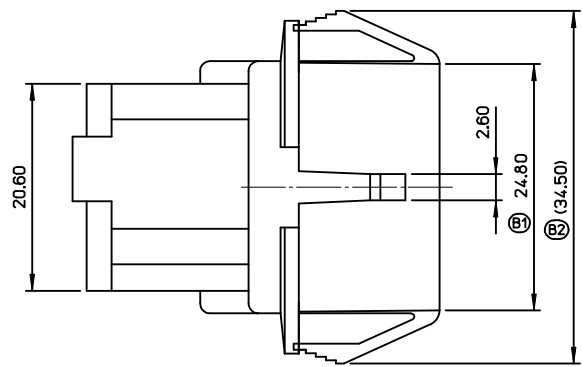
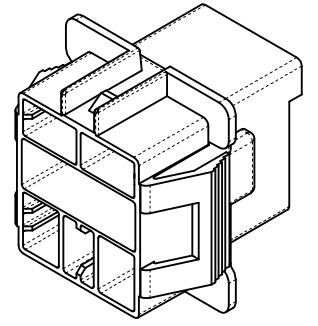
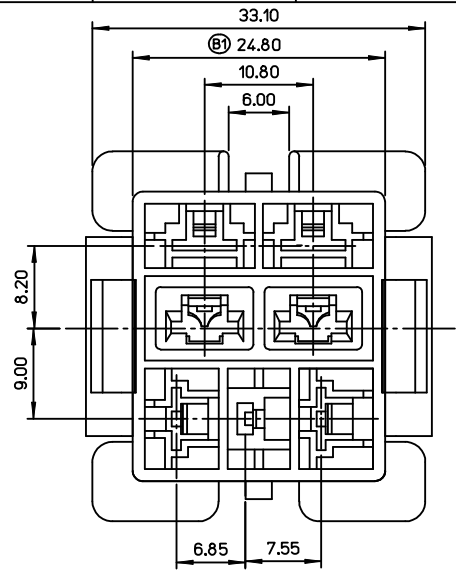
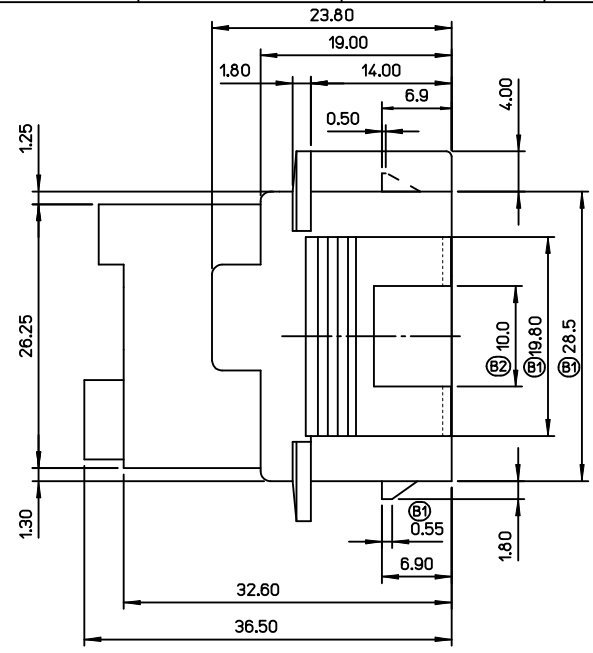


10 9 8 7 6 5 4 3 2 1

TERMINAL PATTERN



- M1 TERMINAL : 35453-9*02
- M2 TERMINAL : 35452-9*02
- M3 TERMINAL : 35725-18/10/1910/3010
- M4 TERMINAL : 35765-0110/0210
- F1 TERMINAL : 35725-5*10
- M = MALE TERMINAL
- F = FEMALE TERMINAL



NOTES

1. MATERIAL :
POLYESTER(PBT), NO GLASS FILLED, UL94V-0,
COLOR : NATURAL
2. PRODUCT SPECIFICATION : PS-35546-001
3. PACKING SPECIFICATION : PK-35546-001
4. MATED HOUSING : 35547-030*
35547-040*

REVISED EC NO: KOR2013-0091 DRWN: JSSHIN 2013/04/02 CHKD: SHCHU 2013/04/02 APPR: YSKIM02 2013/04/08 B2	QUALITY SYMBOLS ▽=0 ▽=0	GENERAL TOLERANCES (UNLESS SPECIFIED)		DIMENSION STYLE MM ONLY		SCALE 2:1	DESIGN UNITS METRIC	THIRD ANGLE PROJECTION		
		4 PLACES	± ---	± ---	DRAWN BY	DATE	TITLE .250 MULTI W-T-W CONN. RECEPTACLE HOUSING-7P			
		3 PLACES	± ---	± ---	WY. YANG	1997/11/12				
		2 PLACES	± ---	± ---	CHECKED BY	DATE	molex			
1 PLACE	± 0.30	± ---	BK. CHOI	1997/11/12						
0 PLACE	± ---	± ---	APPROVED BY	DATE	MATERIAL NO. 355460700		DOCUMENT NO. SD-35546-001		SHEET NO. 1 OF 1	
DRAFT WHERE APPLICABLE MUST REMAIN WITHIN DIMENSIONS		ANGULAR ± 1 °		THIS DRAWING CONTAINS INFORMATION THAT IS PROPRIETARY TO MOLEX INCORPORATED AND SHOULD NOT BE USED WITHOUT WRITTEN PERMISSION						

9 8 7 6 5 4 3 2 1