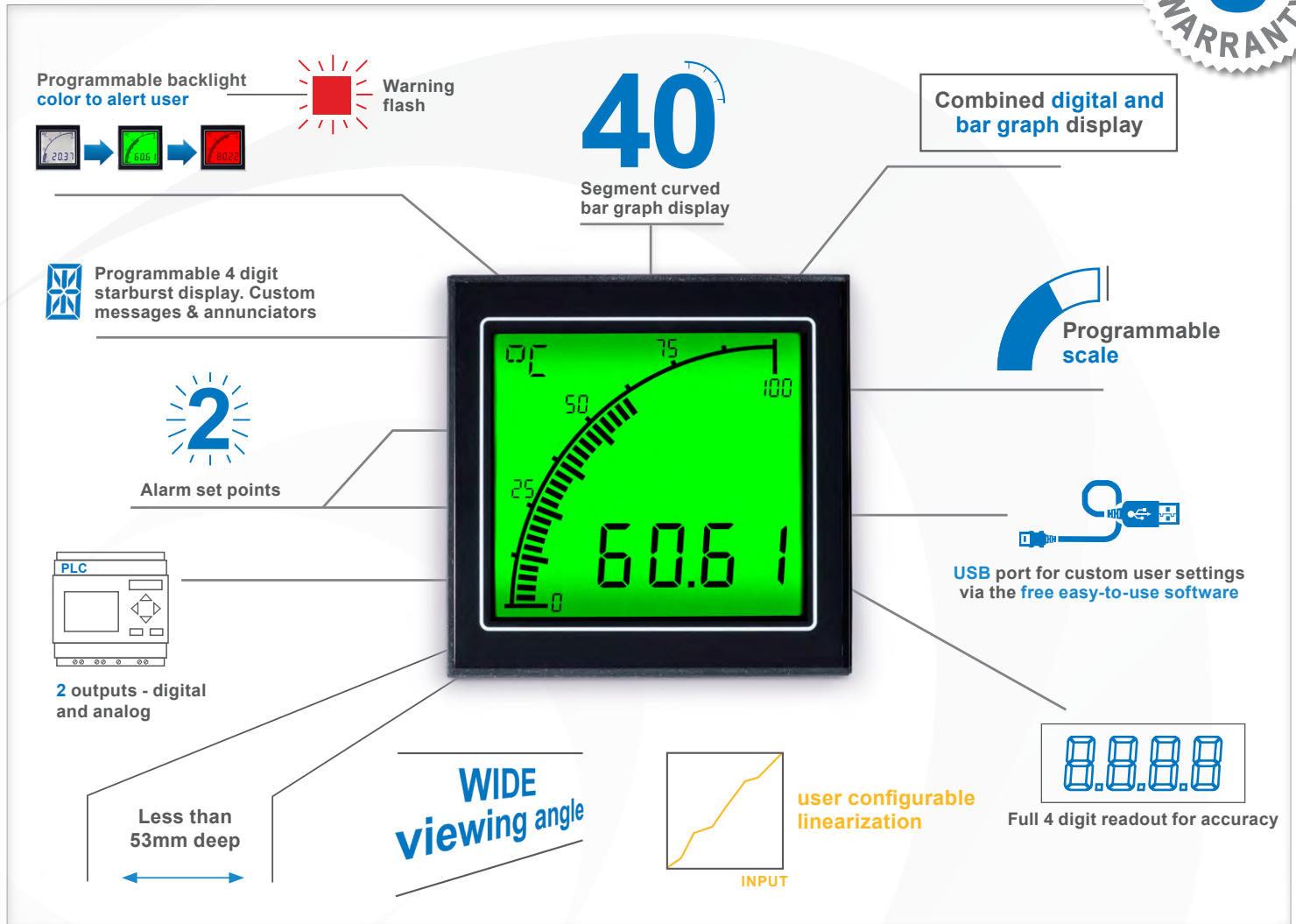




# Temperature Meter

For use with Thermocouples

Easy to Use. Easy to Read.



Featuring an acclaimed easy-to-read display and a versatile set of inputs, the Temperature Meter takes the APM into a wide range of new industrial applications.

The programmable scale and custom annunciators mean users can tailor the meter to display their critical parameters exactly how they want, while the dynamic backlighting, in conjunction with setpoints, means operators are visually alerted when a parameter is out of range. The two outputs can be used to control other systems in the process, meaning the APM Temperature Meter is much more than just a display.

Trumeter's innovative input signal optimization provides precise measurement, display and control. Designed for use with thermocouples, the Temperature meter allows the user to configure up to 20 points in a non-linear conversion table via the APM Configurator application in addition to the inbuilt thermocouple linearisation.

## Key Features

### Large multi-format display that incorporates:

- 40 segment bar graph display
- Large 4-digit display
- Separate Starburst display area for annunciators, custom messages and alarm information
- Dynamic backlight color

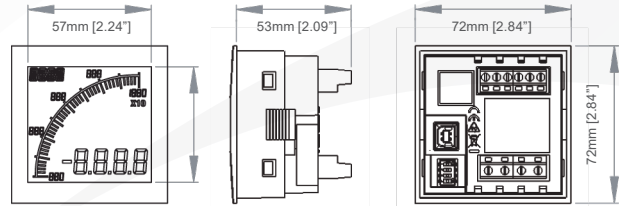
### Programmable:

- Display Range (Both Min & Max Values)
- Custom annunciators
- User-selectable backlight color and intensity
- Two independent alarm set-points
- Two independent outputs
- 4-20mA analog retransmission output

### Visibility:

- User-adjustable backlight brightness and color
- Large display
- Wide viewing angle (horizontal and vertical)
- Custom annunciators

### Dimensions:



Panel cutout: 68mm x 68mm [2.68" x 2.68"] as per DIN43700/IEC61554

Thermocouple Type B, E, J, K, N, R, S and T  
Accuracy 0.5°C after 30 min | 0.2°C after 40 min

#### ENVIRONMENTAL

Temperature - operating -10 to +60°C  
Temperature - storage -40 to +70°C  
IP rating (from the front) NEMA 4 & 12 with IP65

#### POWER SUPPLY

Nominal Input (AC or DC) 12-24V AC/DC  
Max Power 1.6W  
Frequency DC & 50-400 Hz

#### DISPLAY

Number of digits 4  
Digit height 12mm [0.47"]  
Number of message characters 4  
Message character height 6mm [0.236"]  
Backlight colors Red, Green, White  
LCD display Positive or Negative

#### OUTPUTS

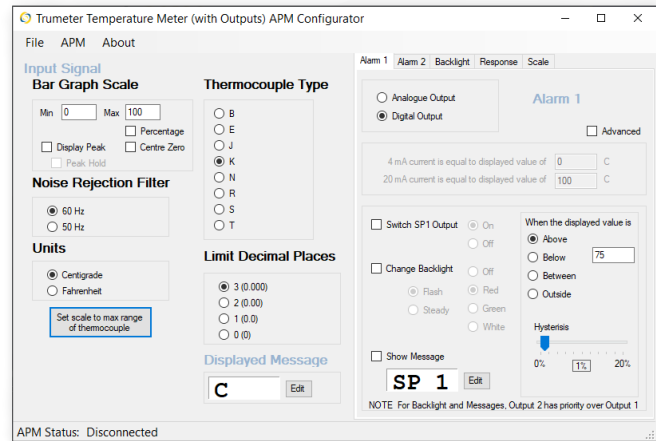
Max voltage 34V  
Max current 500mA  
Analog output 4-20mA

#### CERTIFICATION

UL and cUL, CE, UKCA

## Easy To Use Software

Just plug into any USB port on your PC, run the freely available APM Configurator application and you're off. No drivers required.



### Part Numbers:

Part	Description	By Request: Modbus connectivity
APM-TEMP-APO	APM TEMPERATURE METER, POSITIVE LCD WITH OUTPUTS	APM-TEMP-APS APM TEMPERATURE METER, POSITIVE LCD WITH MODBUS
APM-TEMP-ANO	APM TEMPERATURE METER, NEGATIVE LCD WITH OUTPUTS	APM-TEMP-ANS APM TEMPERATURE METER, NEGATIVE LCD WITH MODBUS
022128-01	USB Cable	



**Trumeter (The Americas)**  
6601 Lyons Rd, Suite H-7  
Coconut Creek, Florida  
FL 33073,  
USA  
Tel: +1 954 725 6699  
Email: sales.usa@trumeter.com

**Trumeter (Europe)**  
Pilot Mill  
Alfred Street  
Bury,  
BL9 9EF  
Tel: +44 161 674 0960  
Email: sales.uk@trumeter.com

**Asia Pacific Distributor**  
Innovative Design Technologies Sdn. Bhd  
Lot 5881, Lorong Iks Bukit Minyak 1  
Taman Perindustrian Iks, 14000 Bukit Tengah  
Penang, Malaysia  
Web: www.idtworld.com  
Tel: + 604 5015700  
Email: info@idtworld.com